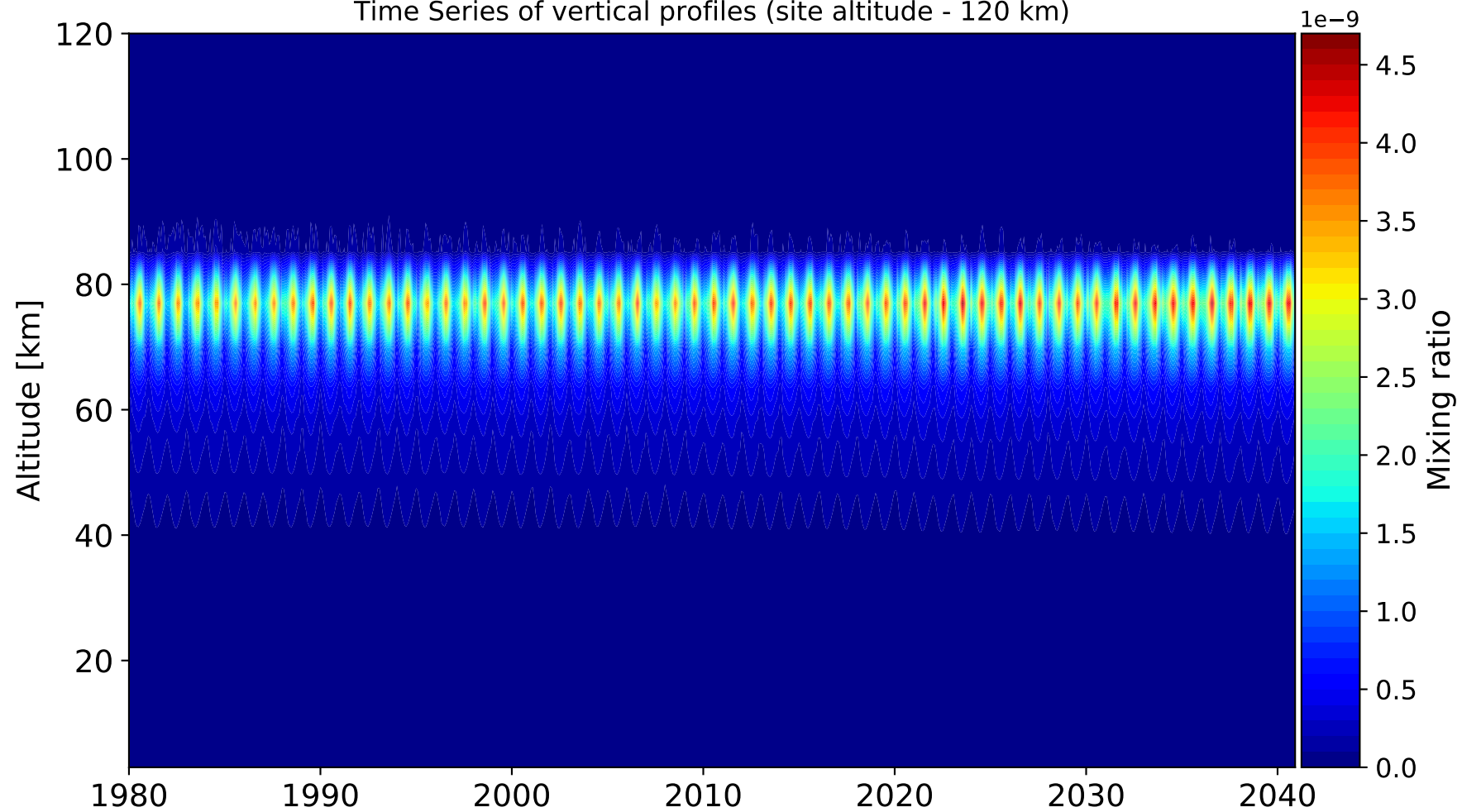
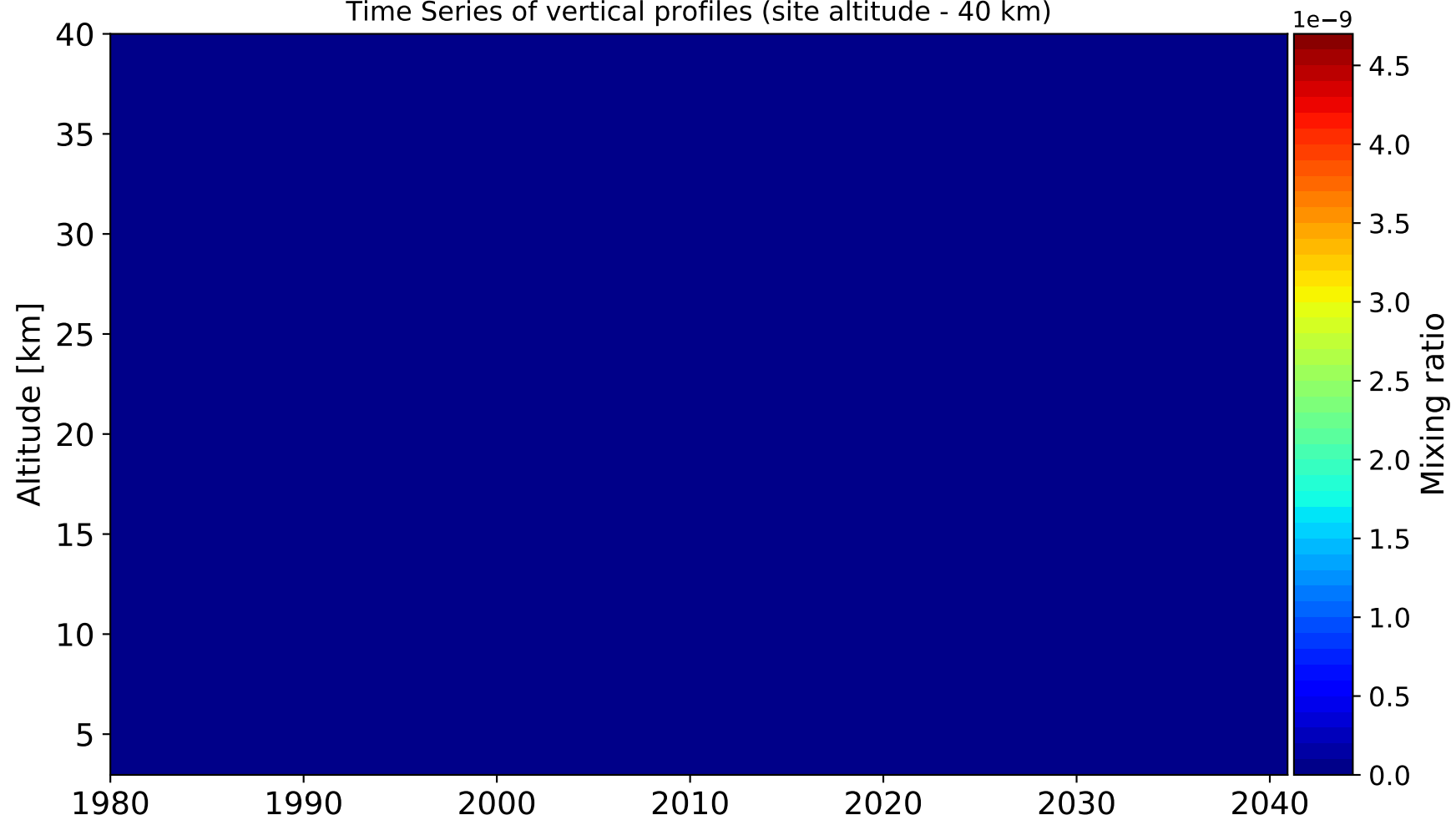


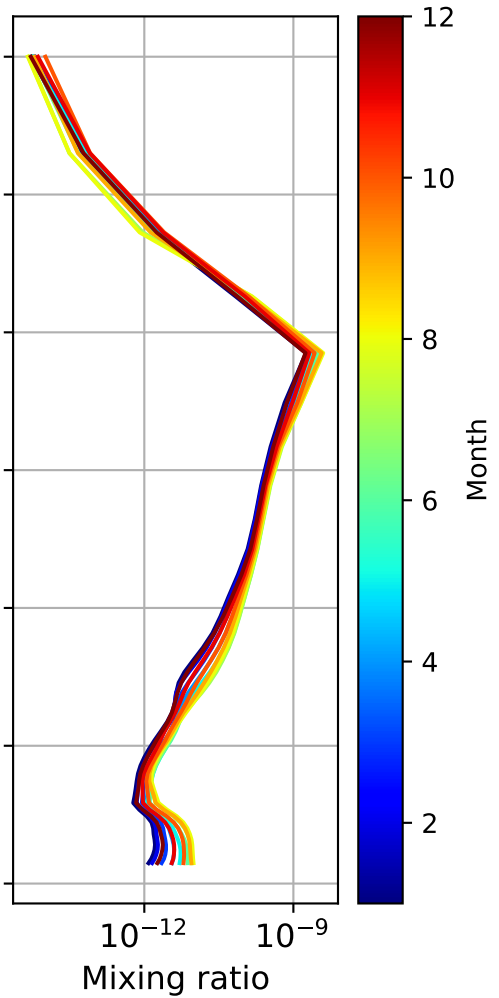
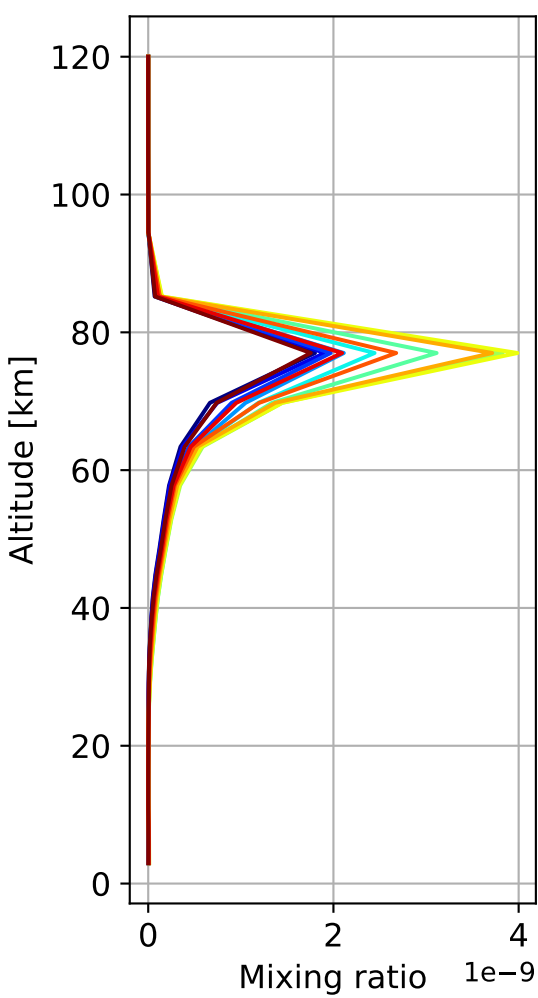
Time Series of vertical profiles (site altitude - 120 km)



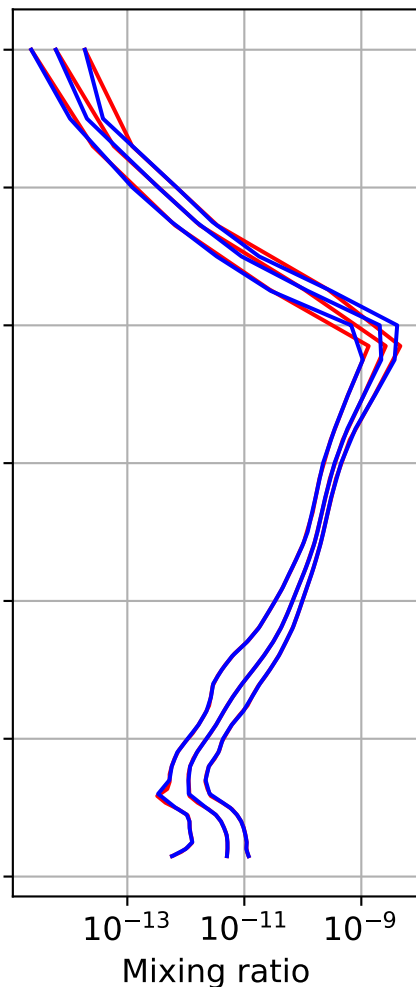
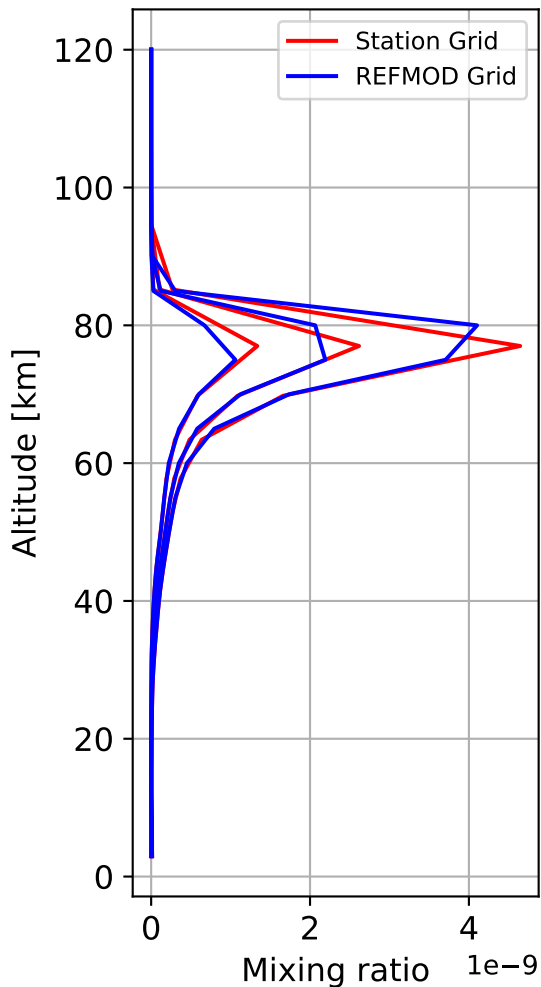
Time Series of vertical profiles (site altitude - 40 km)



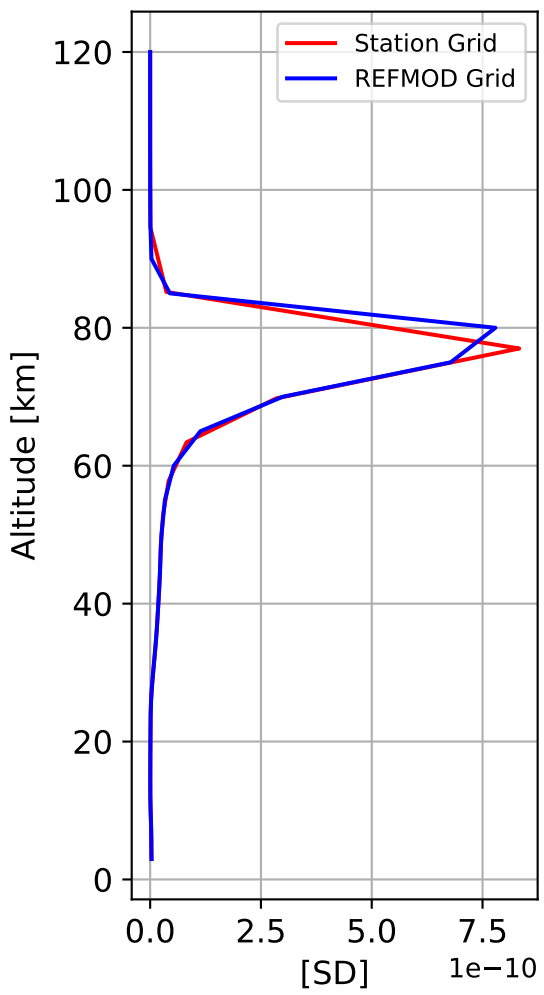
# Monthly mean WACCM profile (interpolated to station grid) Zugspitze, 47.42N, 10.98E, 2.964kmasl



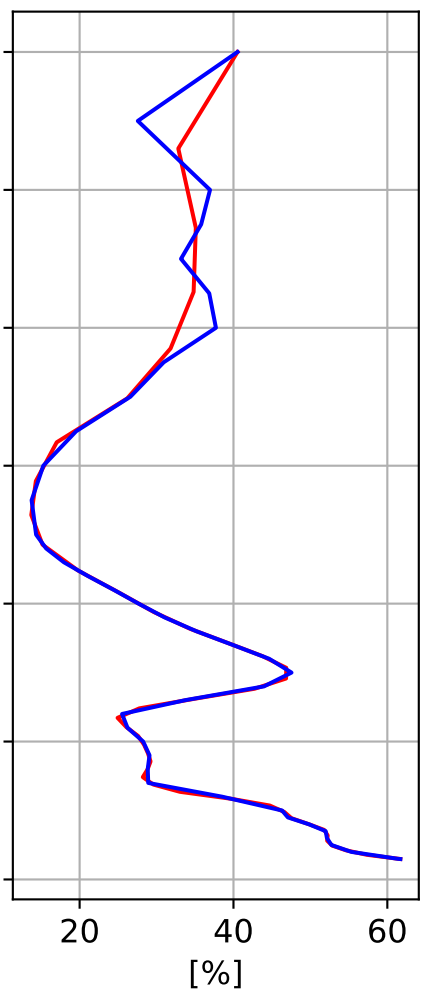
Min, Max, Mean of 732 profiles  
Zugspitze, 47.42N, 10.98E, 2.964kmasl



### Std. Deviation



### Percent Deviation

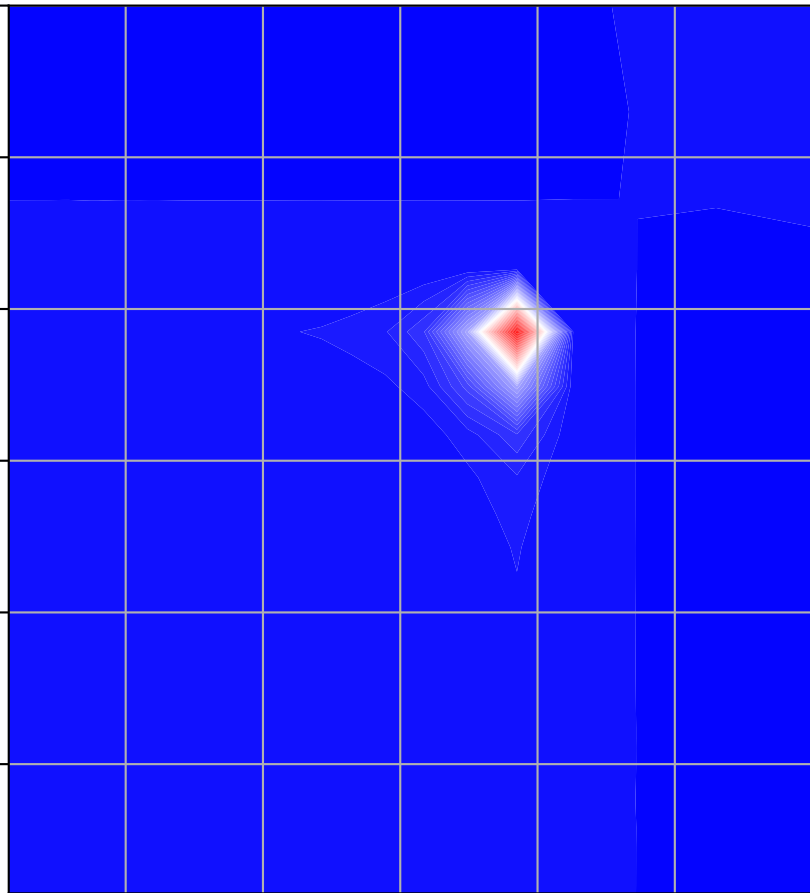


# Level covariance matrix

1e-19

Altitude [km]

120  
100  
80  
60  
40  
20



20 40 60 80 100 120

Altitude [km]

Mixing ratio[<sup>2</sup>]

6.75  
6.00  
5.25  
4.50  
3.75  
3.00  
2.25  
1.50  
0.75  
0.00