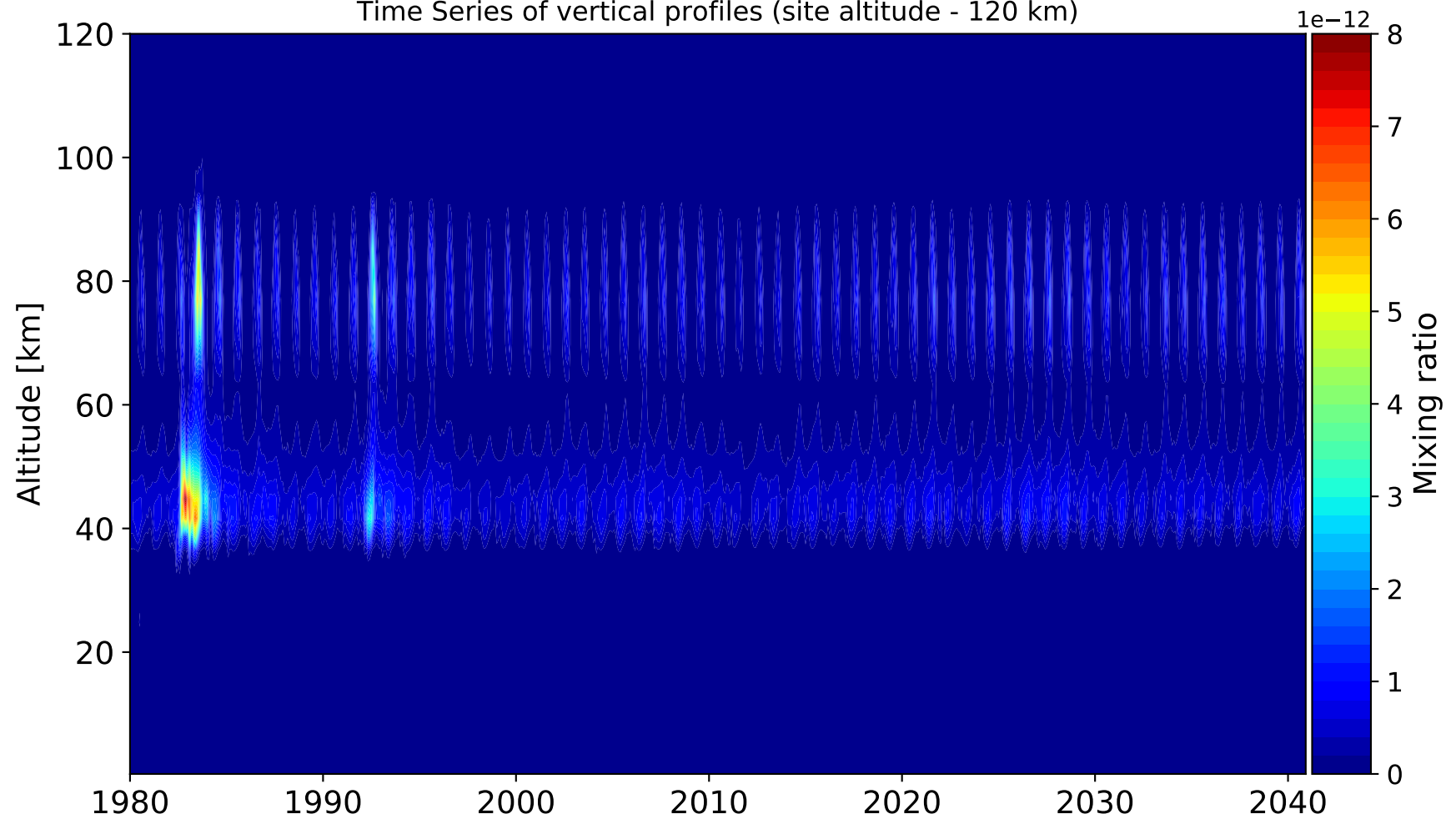
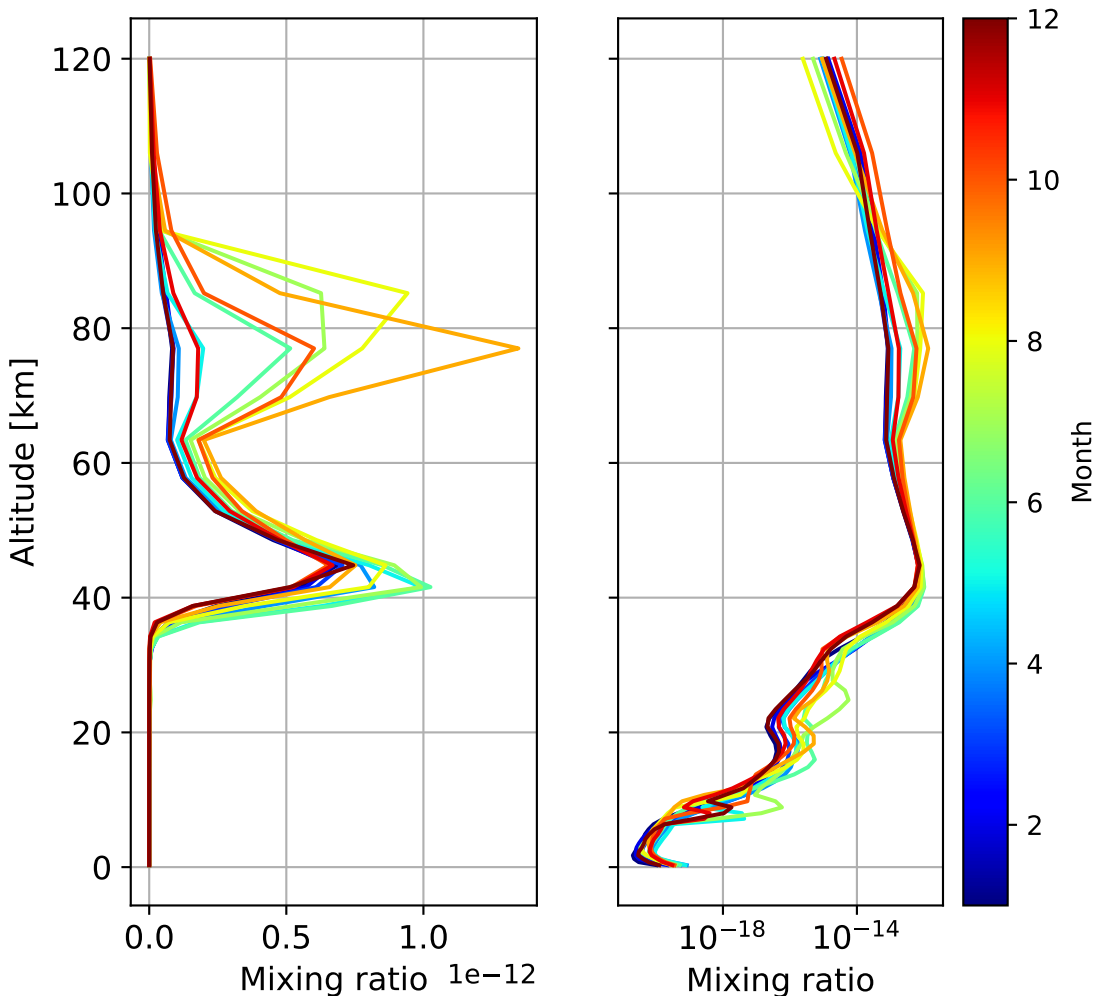


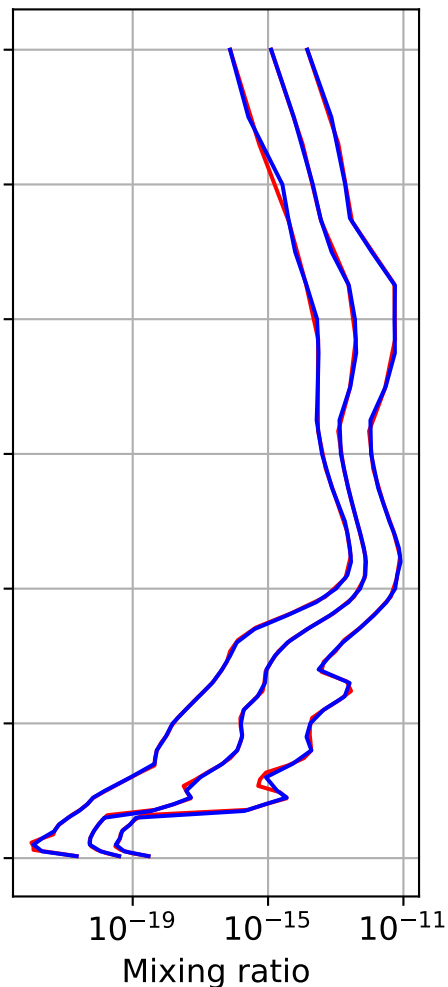
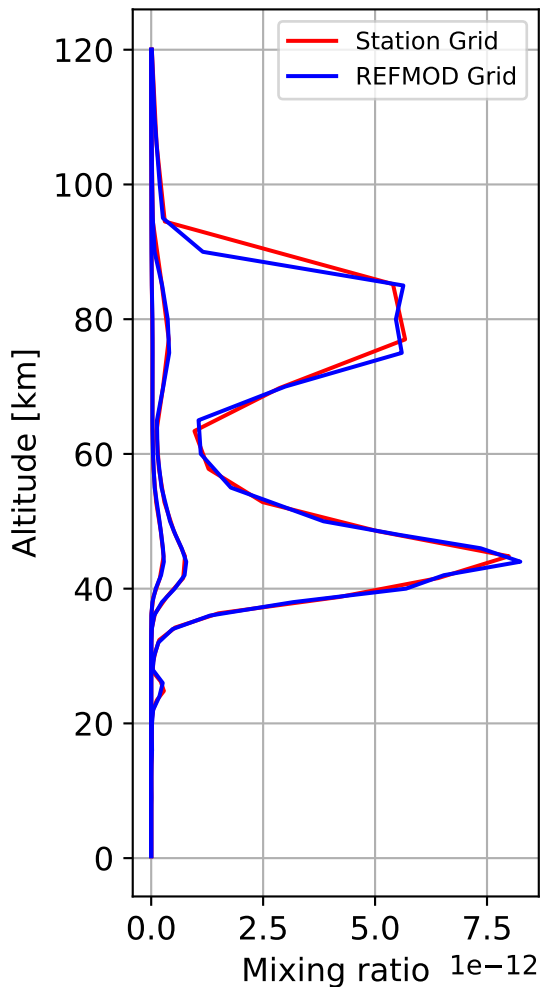
Time Series of vertical profiles (site altitude - 120 km)



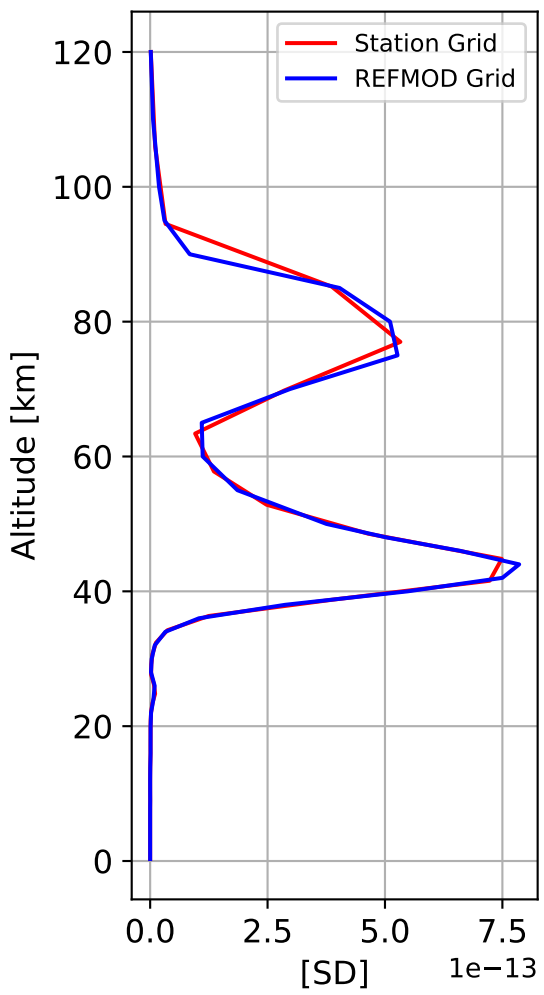
Monthly mean WACCM profile (interpolated to station grid)
Timmins, 48.57N, 278.62E, 0.295km/sl



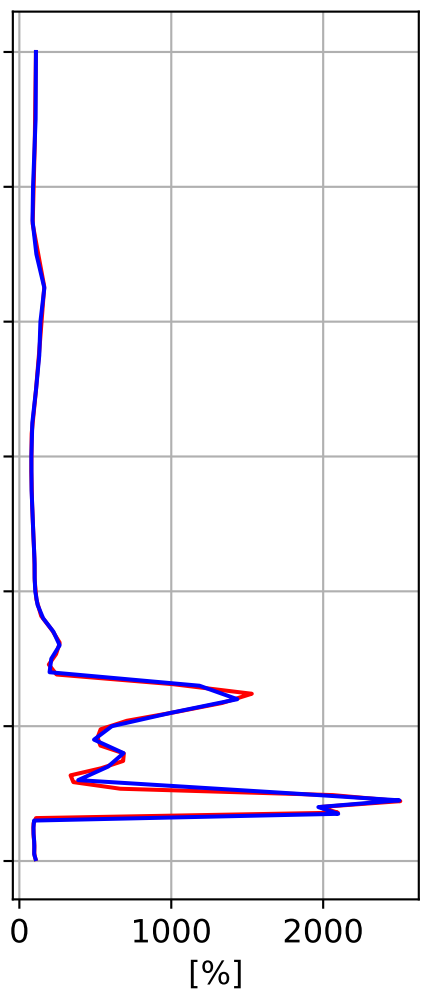
Min, Max, Mean of 732 profiles
Timmins, 48.57N, 278.62E, 0.295kmasl



Std. Deviation



Percent Deviation



Level covariance matrix

$1e-25$

