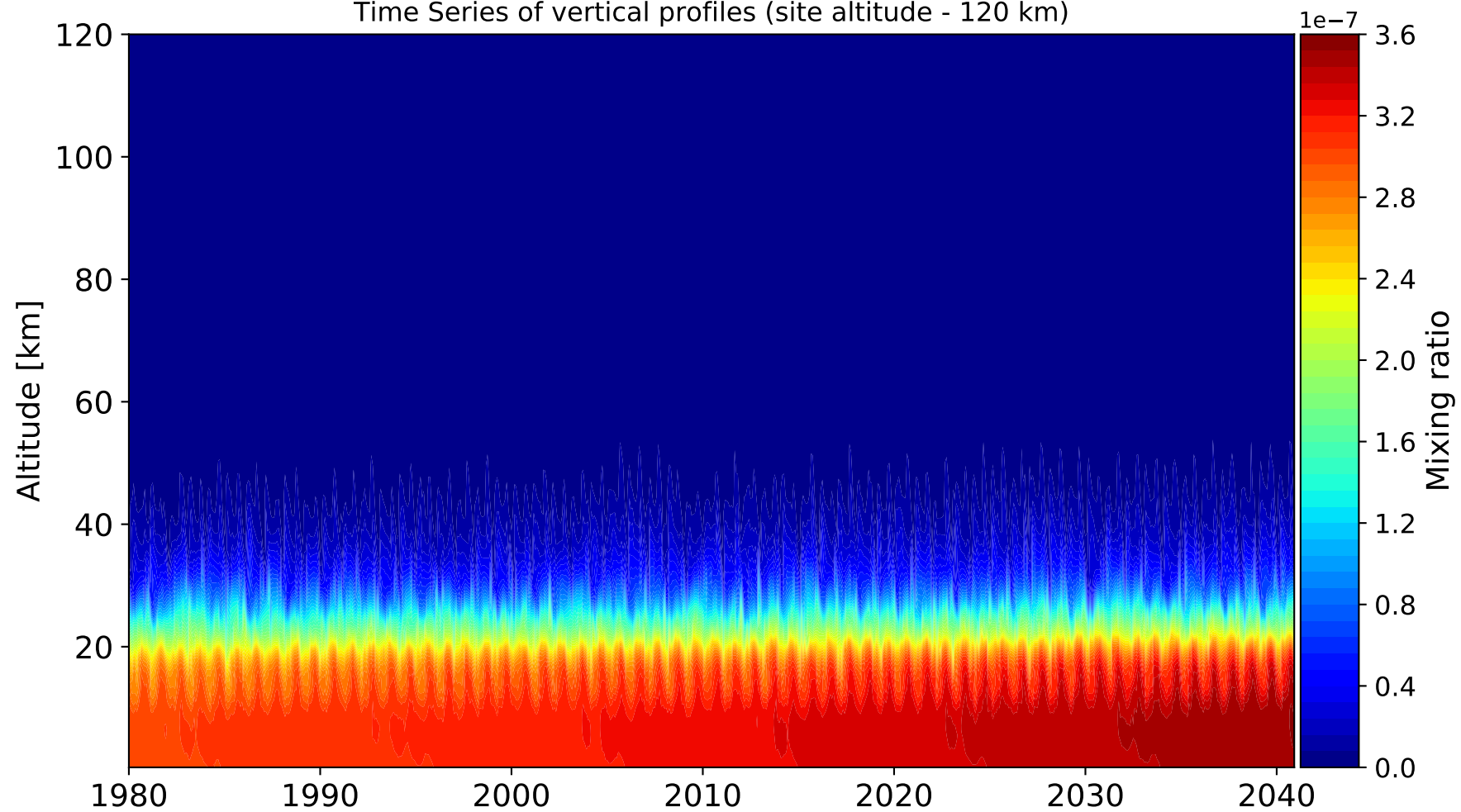
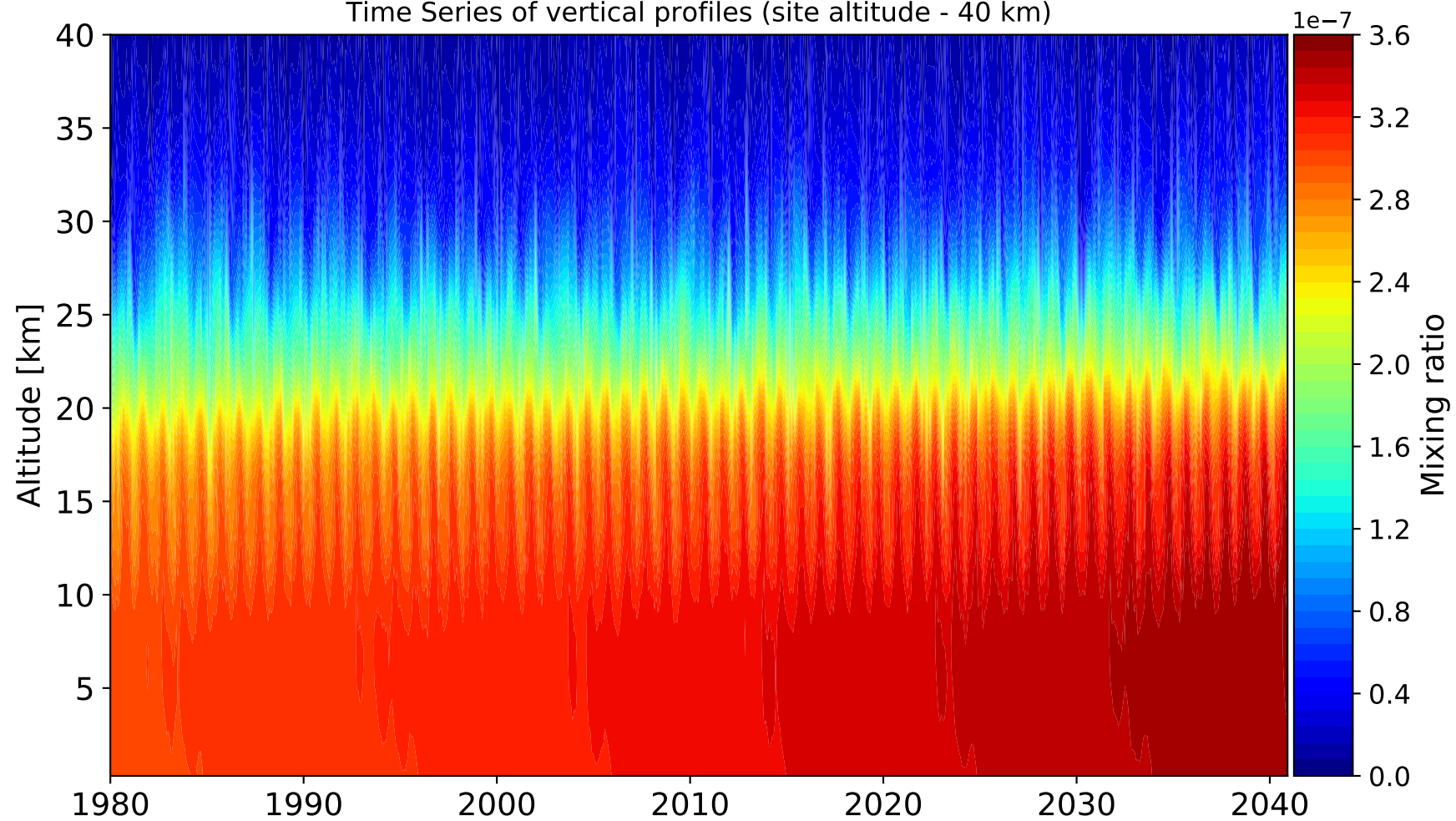


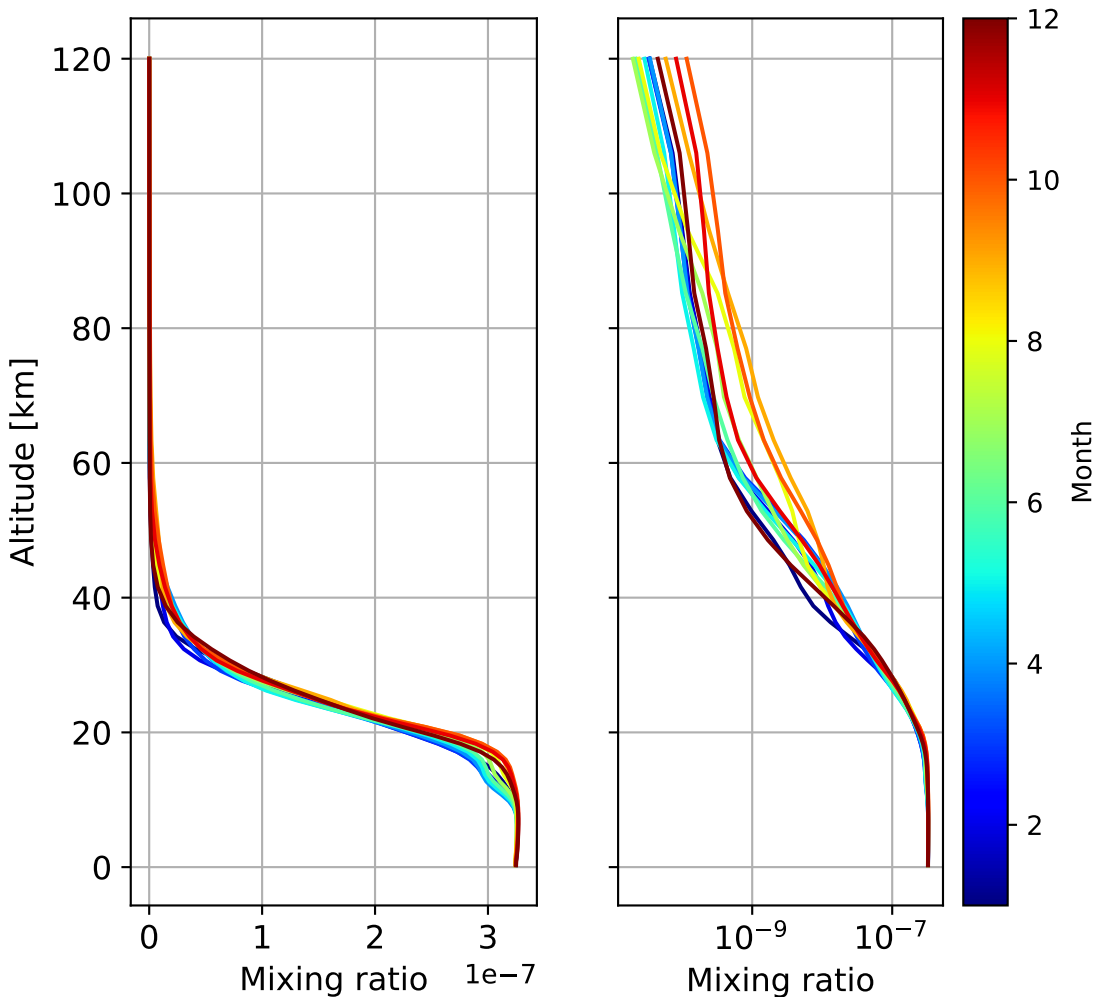
Time Series of vertical profiles (site altitude - 120 km)



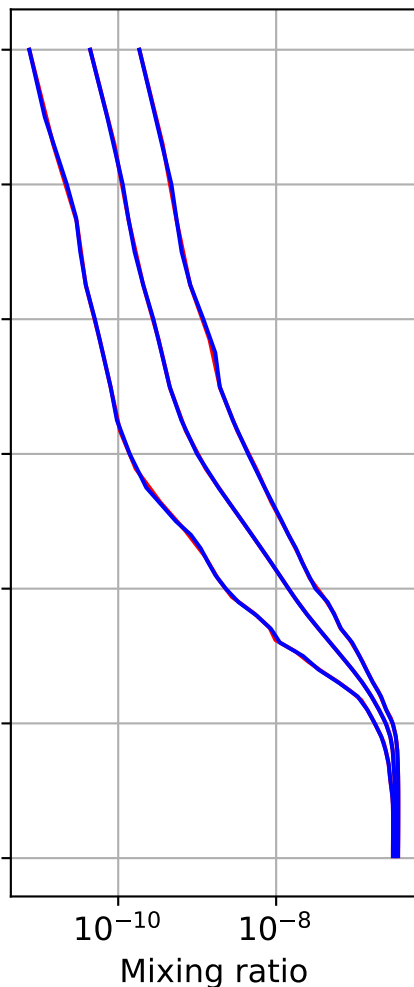
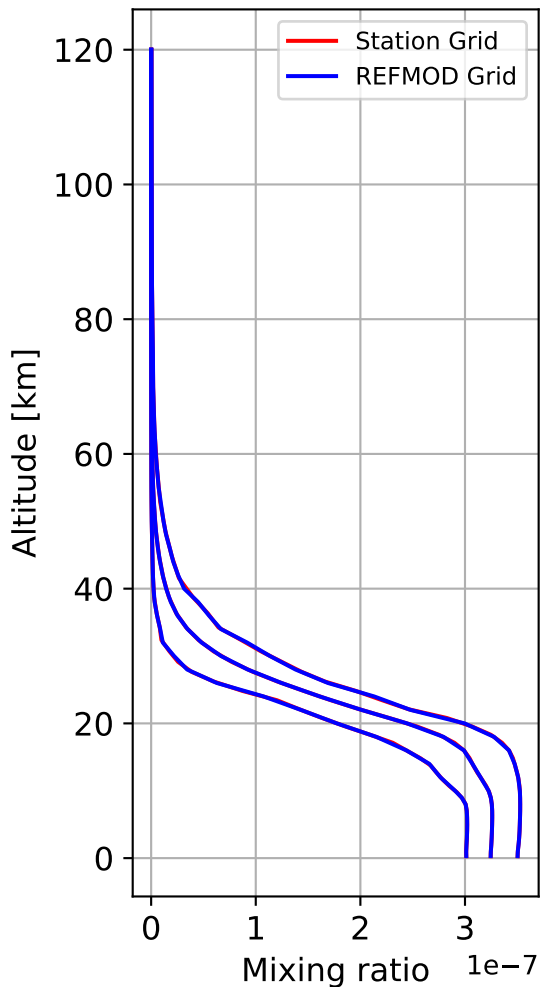
Time Series of vertical profiles (site altitude - 40 km)



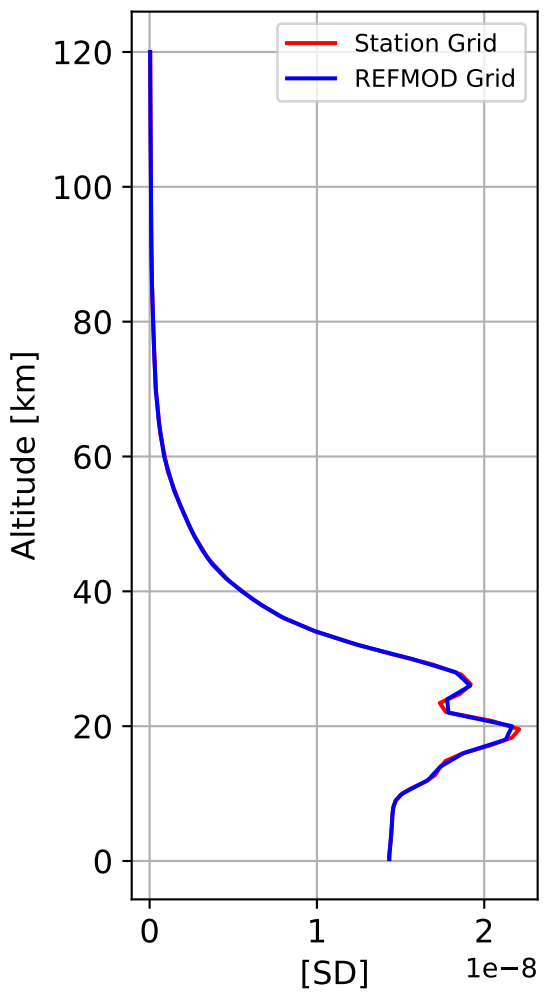
Monthly mean WACCM profile (interpolated to station grid)
Timmins, 48.57N, 278.62E, 0.295kmasl



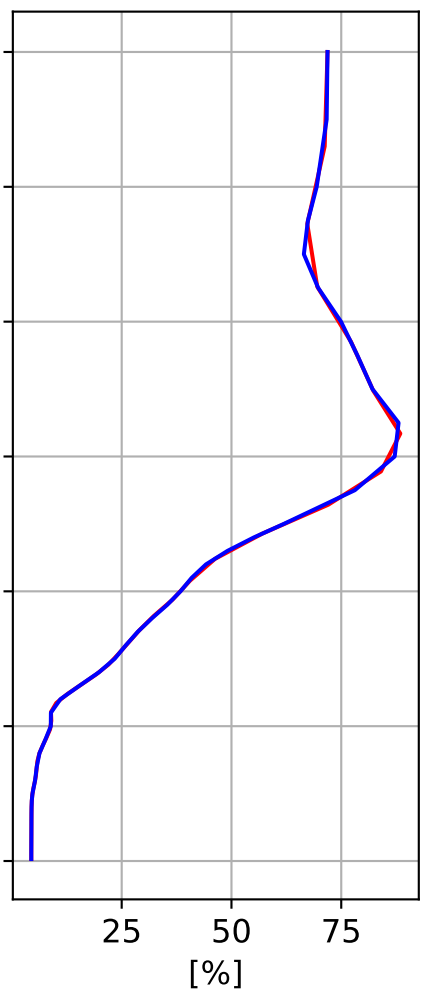
Min, Max, Mean of 732 profiles
Timmins, 48.57N, 278.62E, 0.295kmasl



Std. Deviation



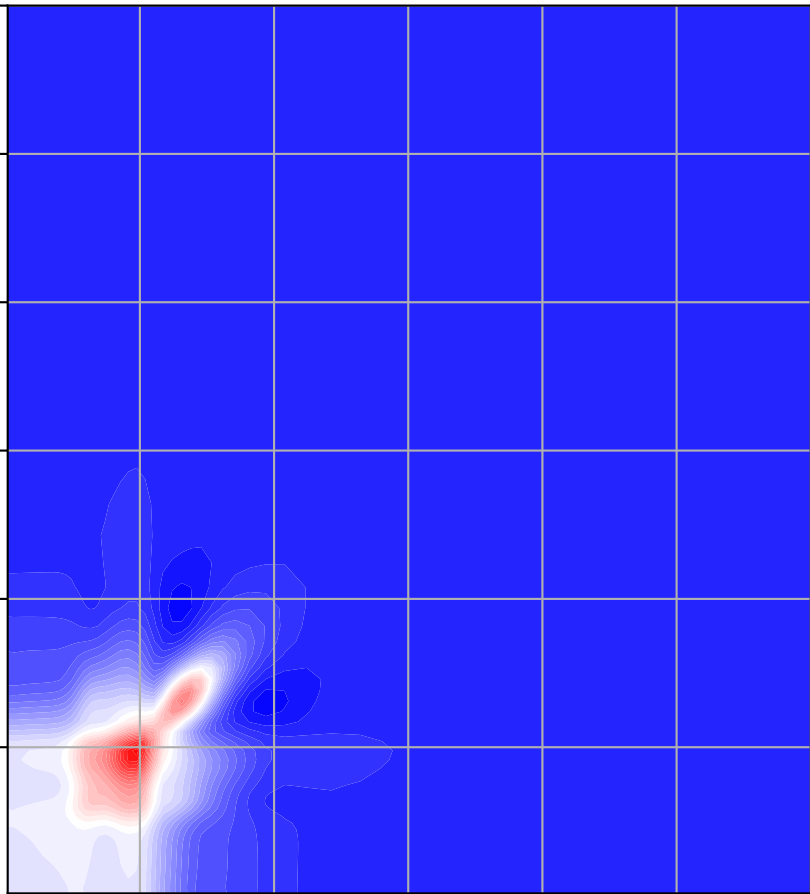
Percent Deviation



Level covariance matrix

1e-16

Altitude [km]

120
100
80
60
40
20Mixing ratio[²]

20

Altitude [km]

100

120