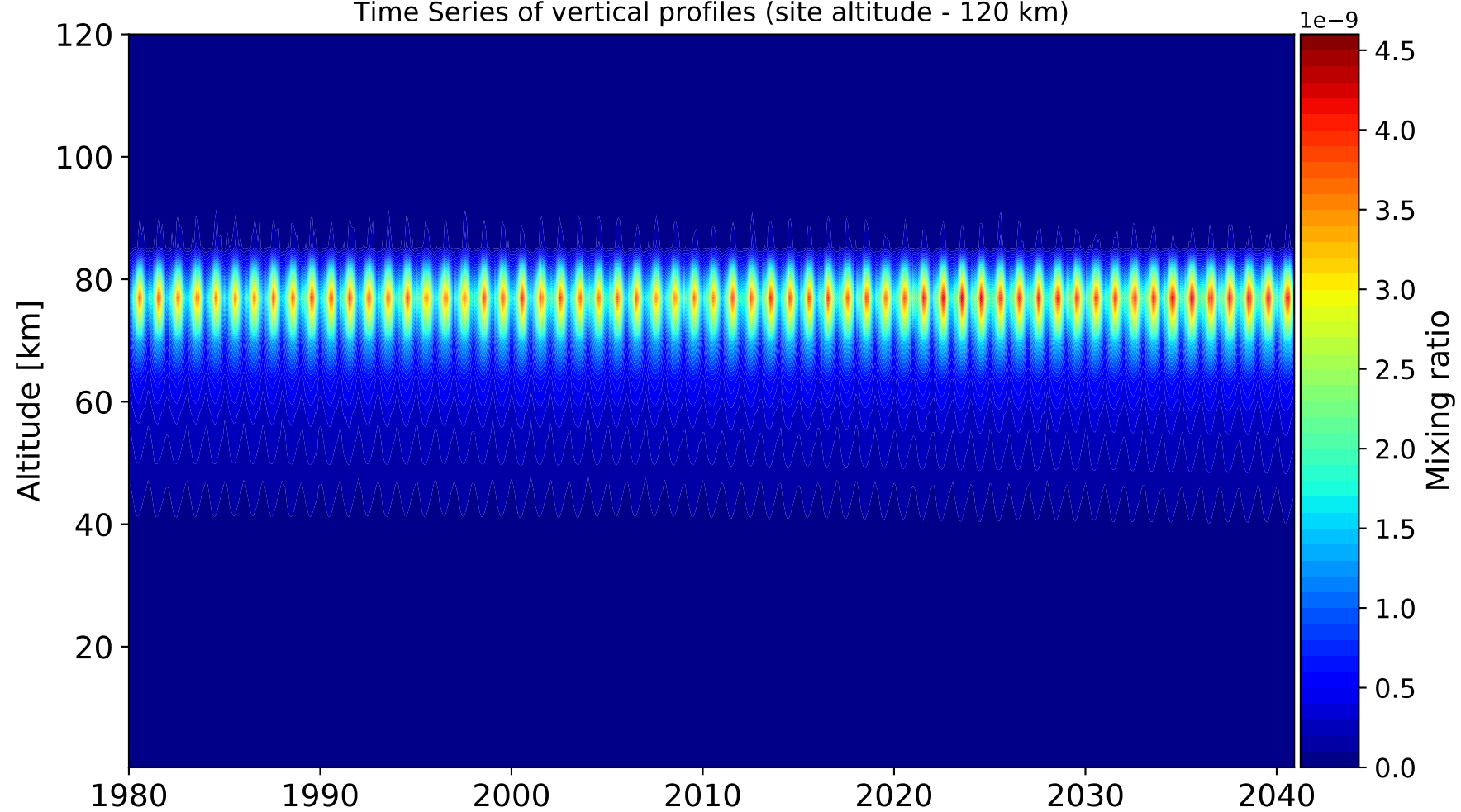
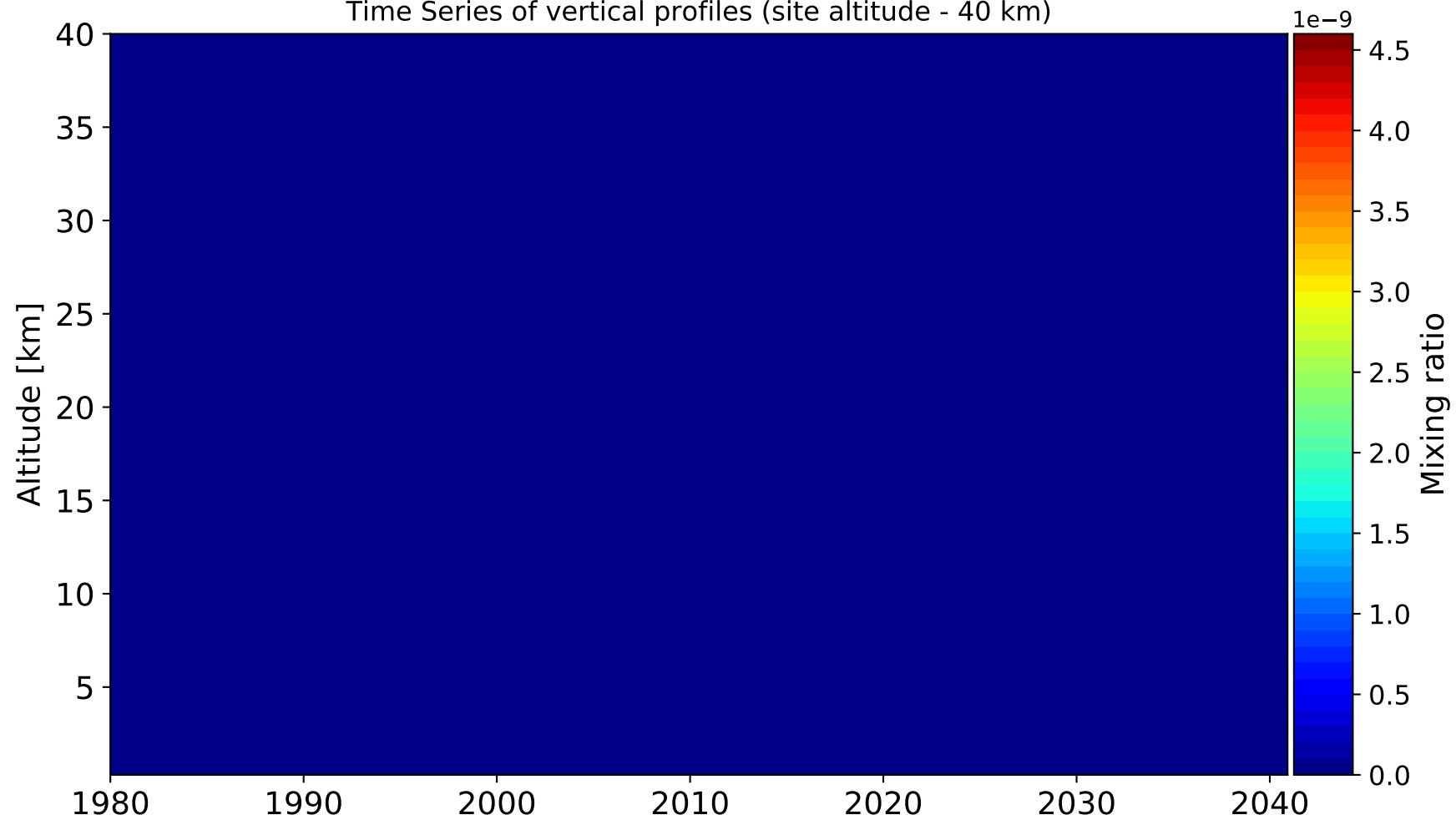


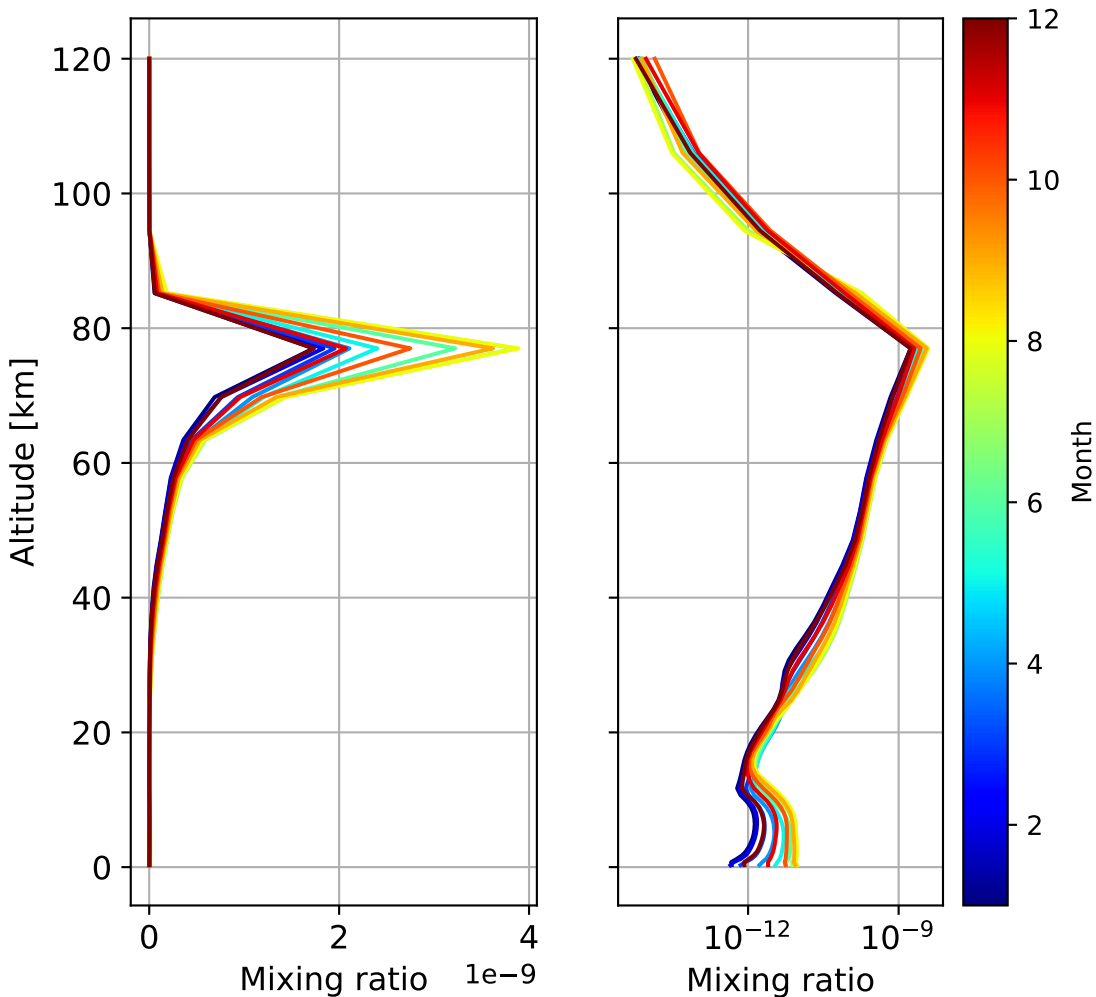
Time Series of vertical profiles (site altitude - 120 km)



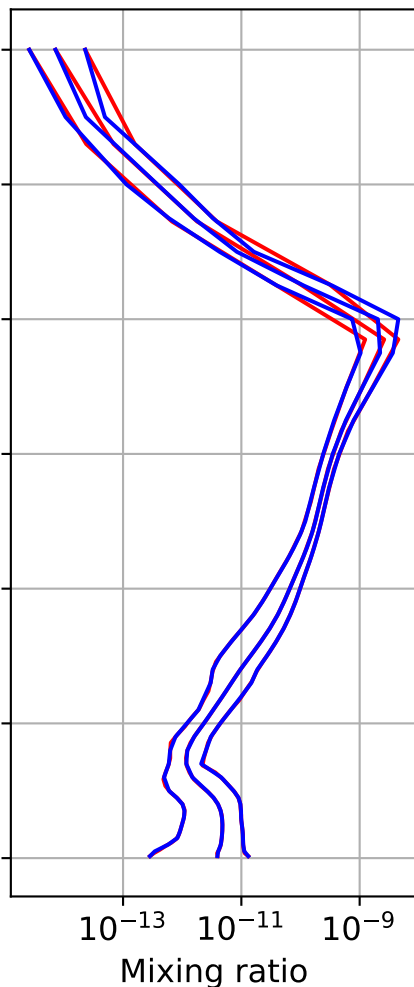
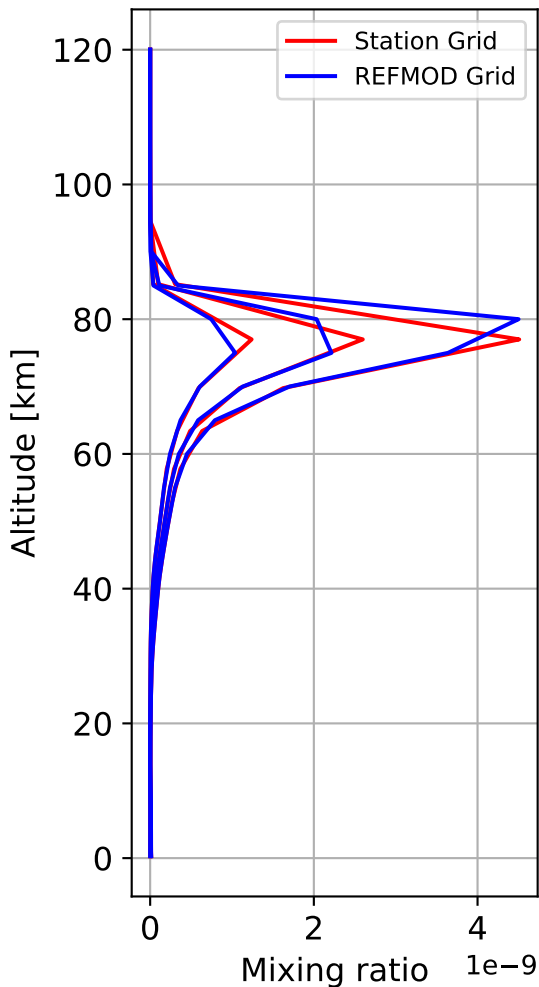
Time Series of vertical profiles (site altitude - 40 km)



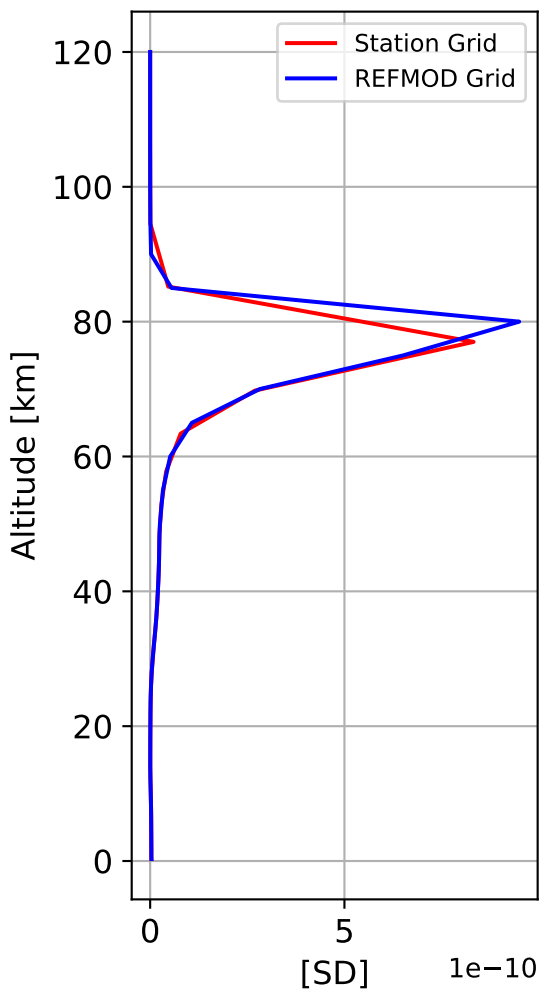
Monthly mean WACCM profile (interpolated to station grid)
Timmins, 48.57N, 278.62E, 0.295kmasl



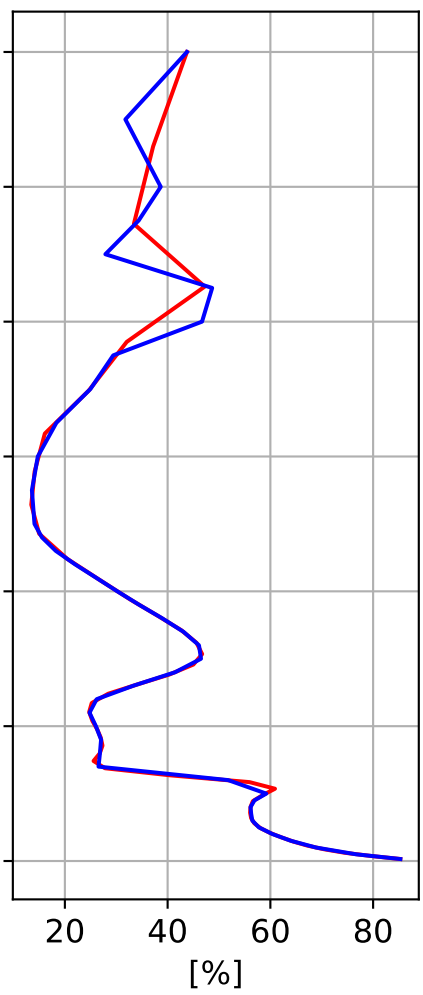
Min, Max, Mean of 732 profiles
Timmins, 48.57N, 278.62E, 0.295kmasl



Std. Deviation



Percent Deviation

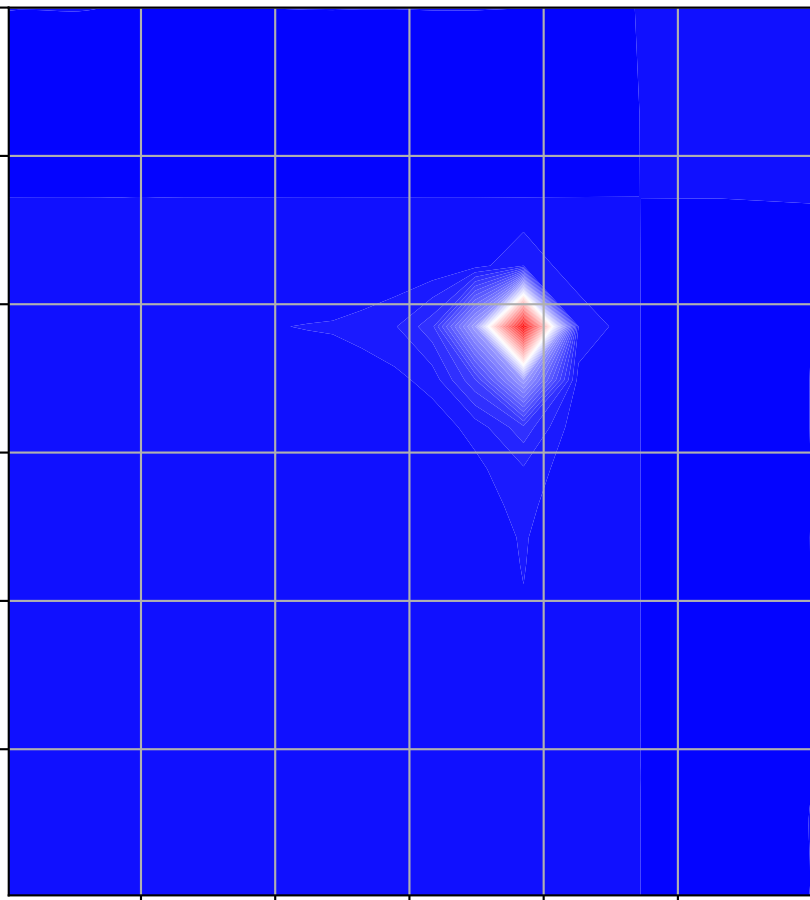


Level covariance matrix

1e-19

Altitude [km]

120
100
80
60
40
20



20 40 60 80 100 120

Altitude [km]

Mixing ratio [^2]

6.75
6.00
5.25
4.50
3.75
3.00
2.25
1.50
0.75
0.00