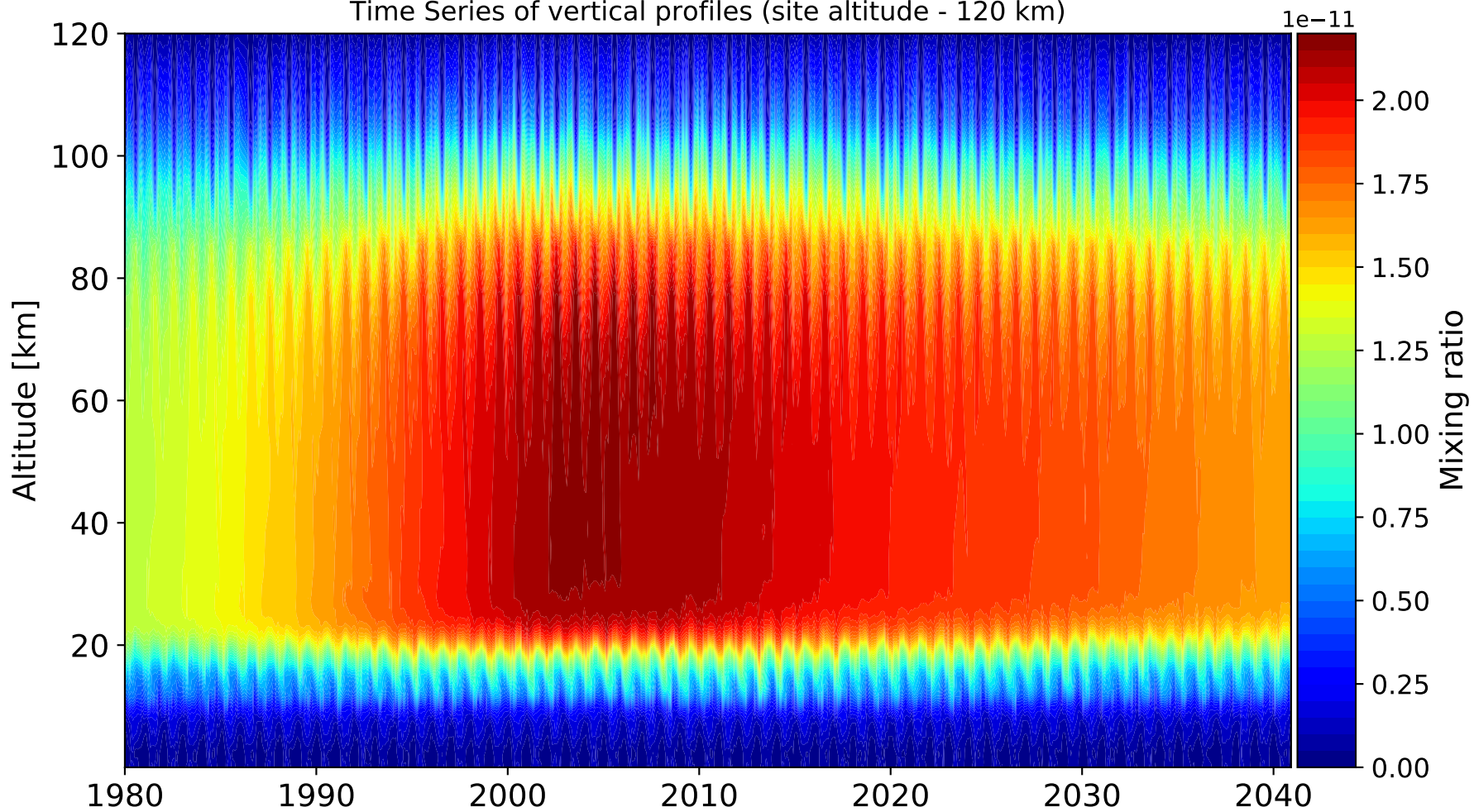
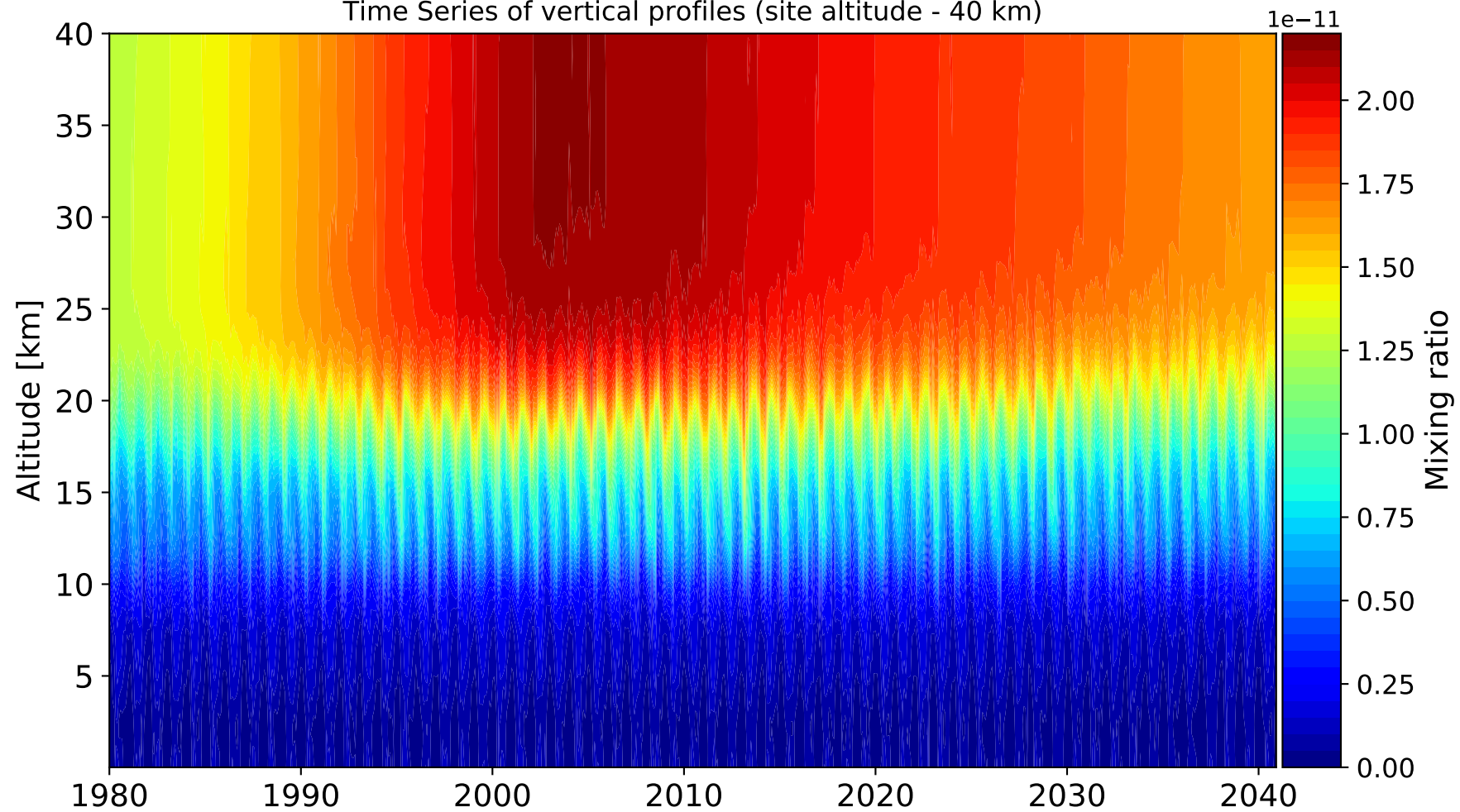


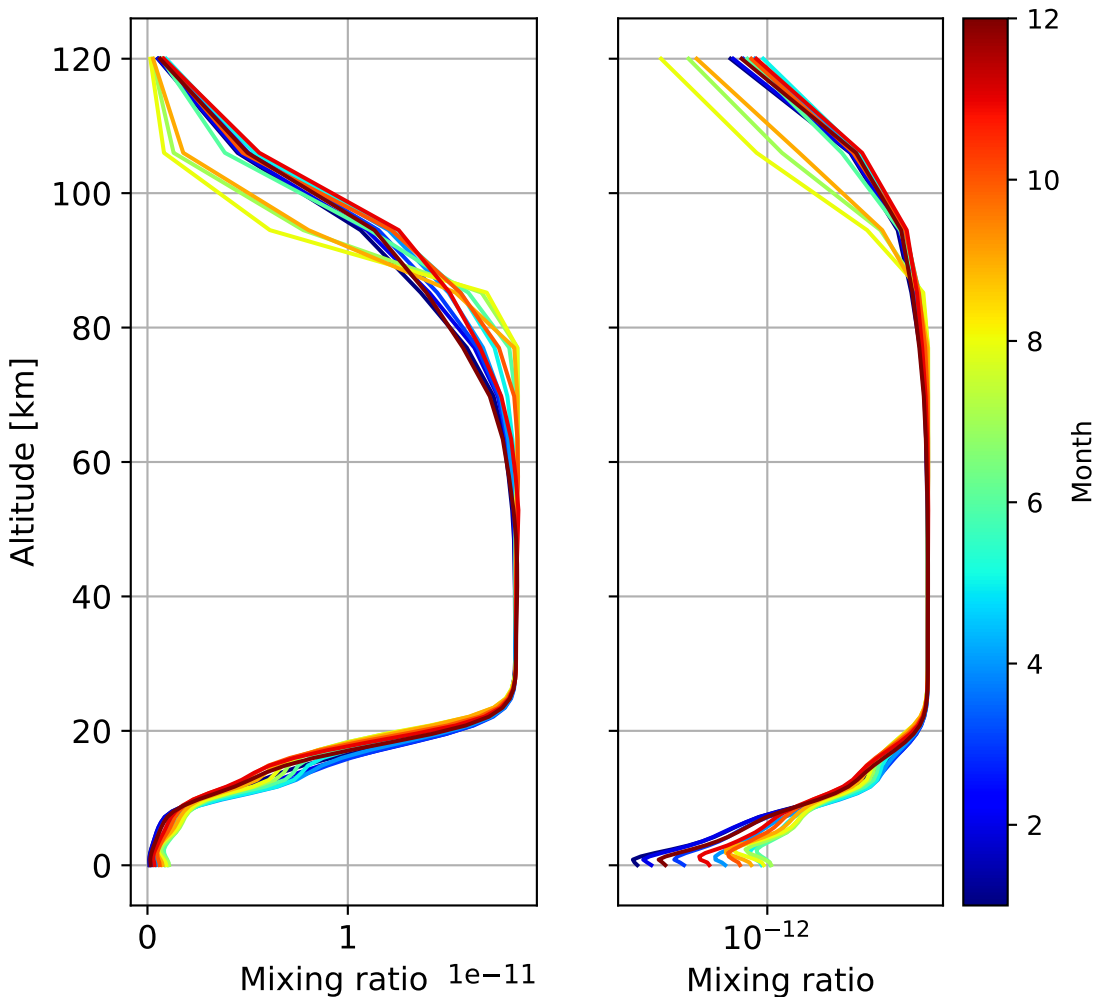
Time Series of vertical profiles (site altitude - 120 km)



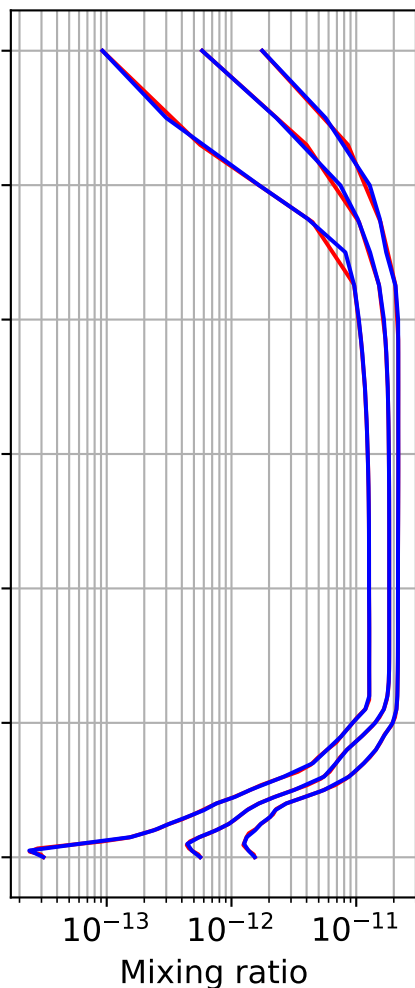
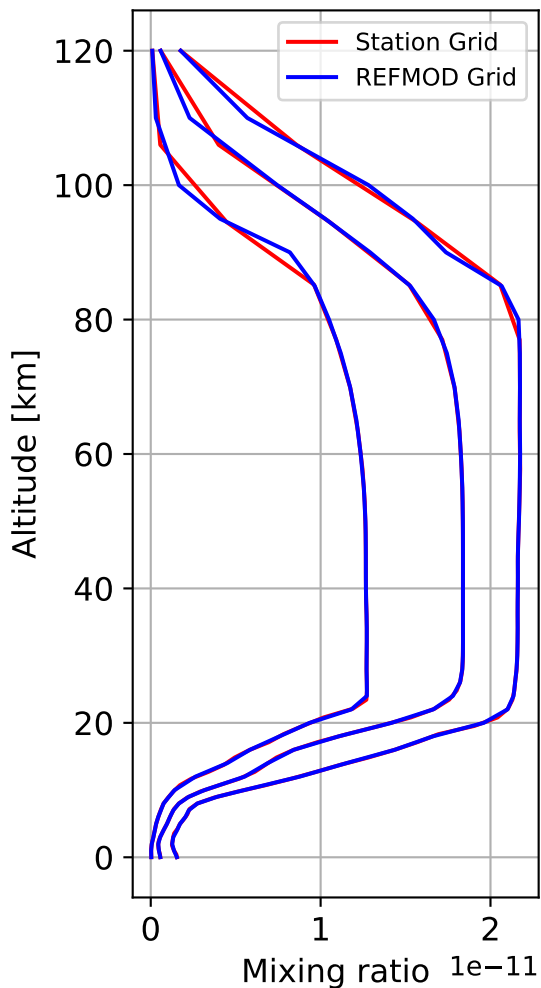
Time Series of vertical profiles (site altitude - 40 km)



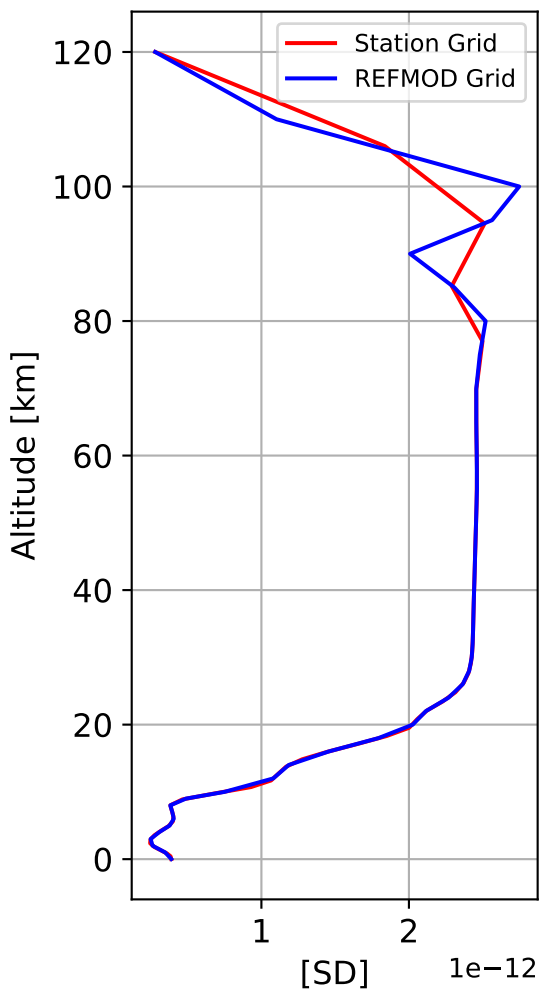
Monthly mean WACCM profile (interpolated to station grid)
St_Petersburg, 59.88N, 29.83E, 0.02kmasl



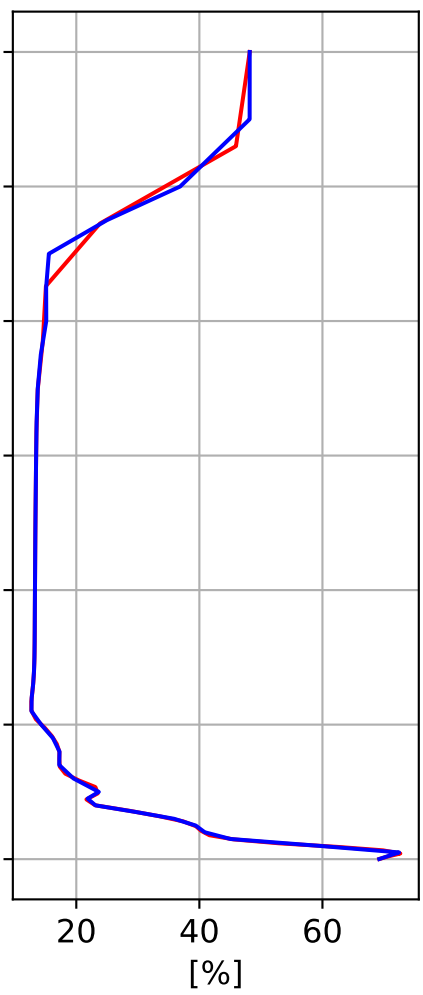
Min, Max, Mean of 732 profiles
St_Petersburg, 59.88N, 29.83E, 0.02kmasl



Std. Deviation



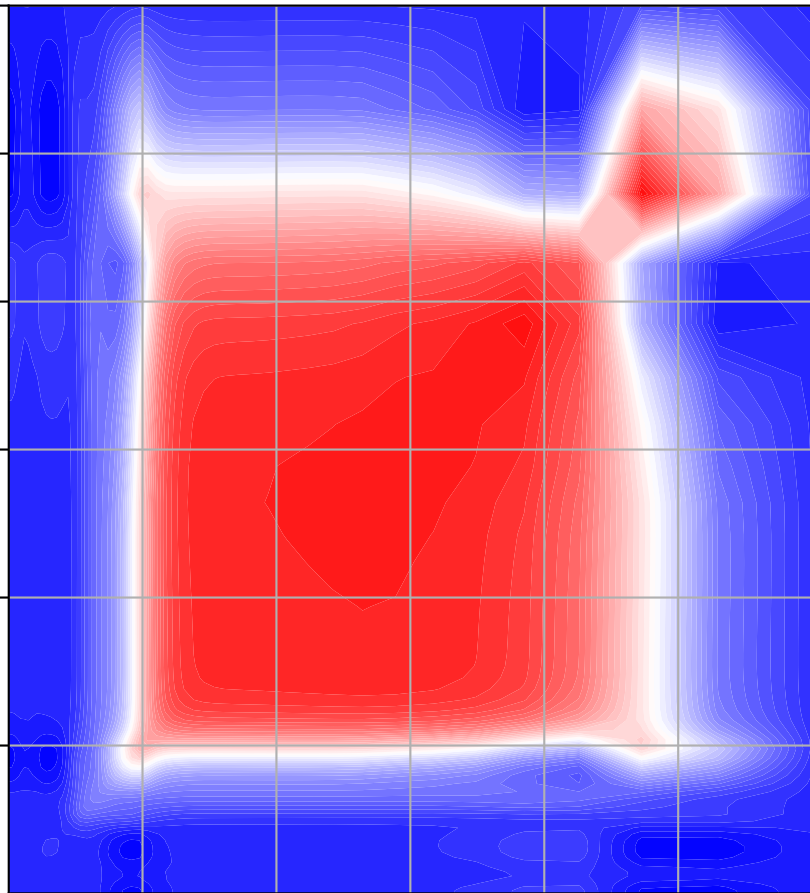
Percent Deviation



Level covariance matrix

1e-24

Altitude [km]

120
100
80
60
40
20Mixing ratio[~ 2]6.00
5.25
4.50
3.75
3.00
2.25
1.50
0.75
0.0020 40 60 80 100 120
Altitude [km]