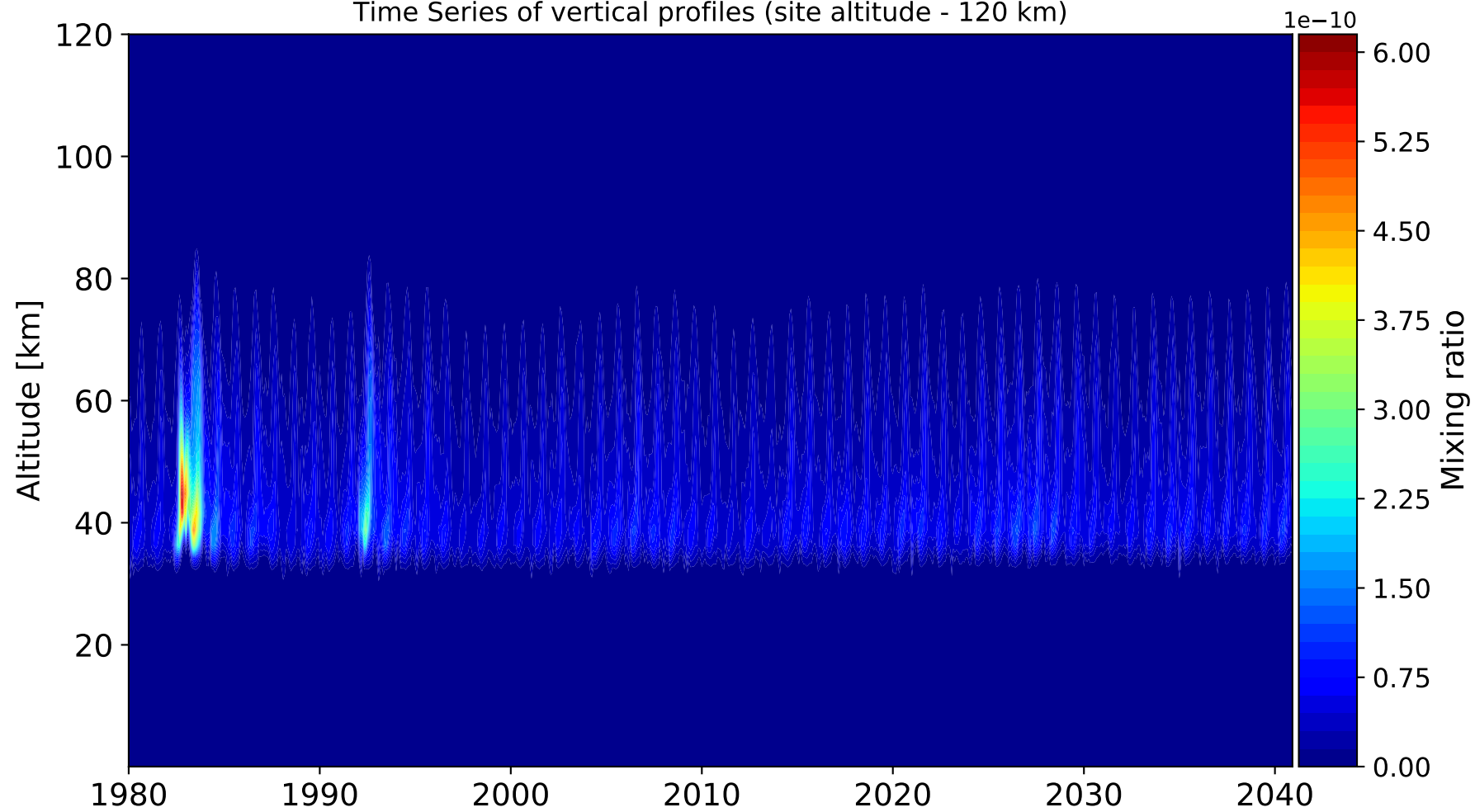
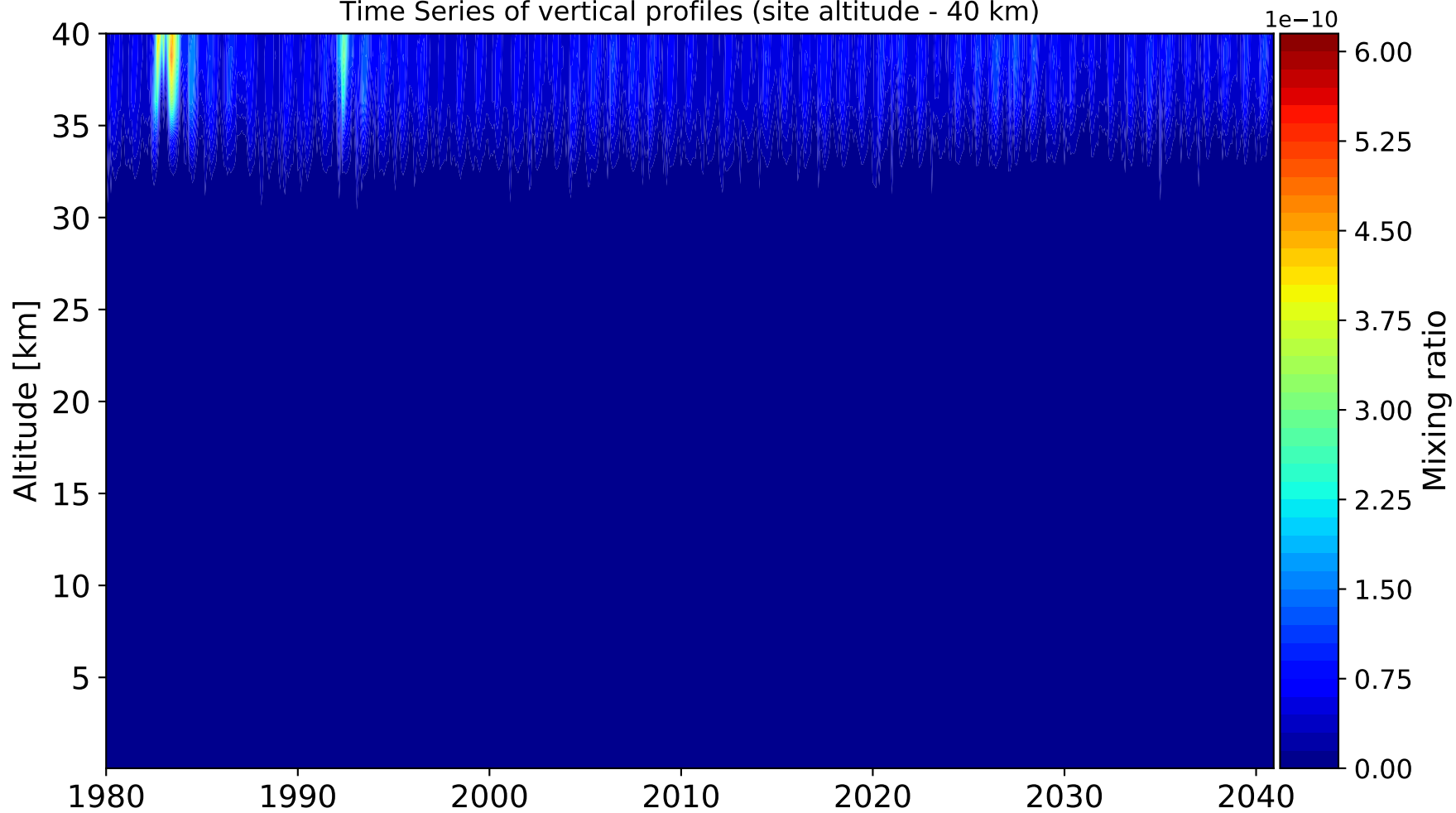


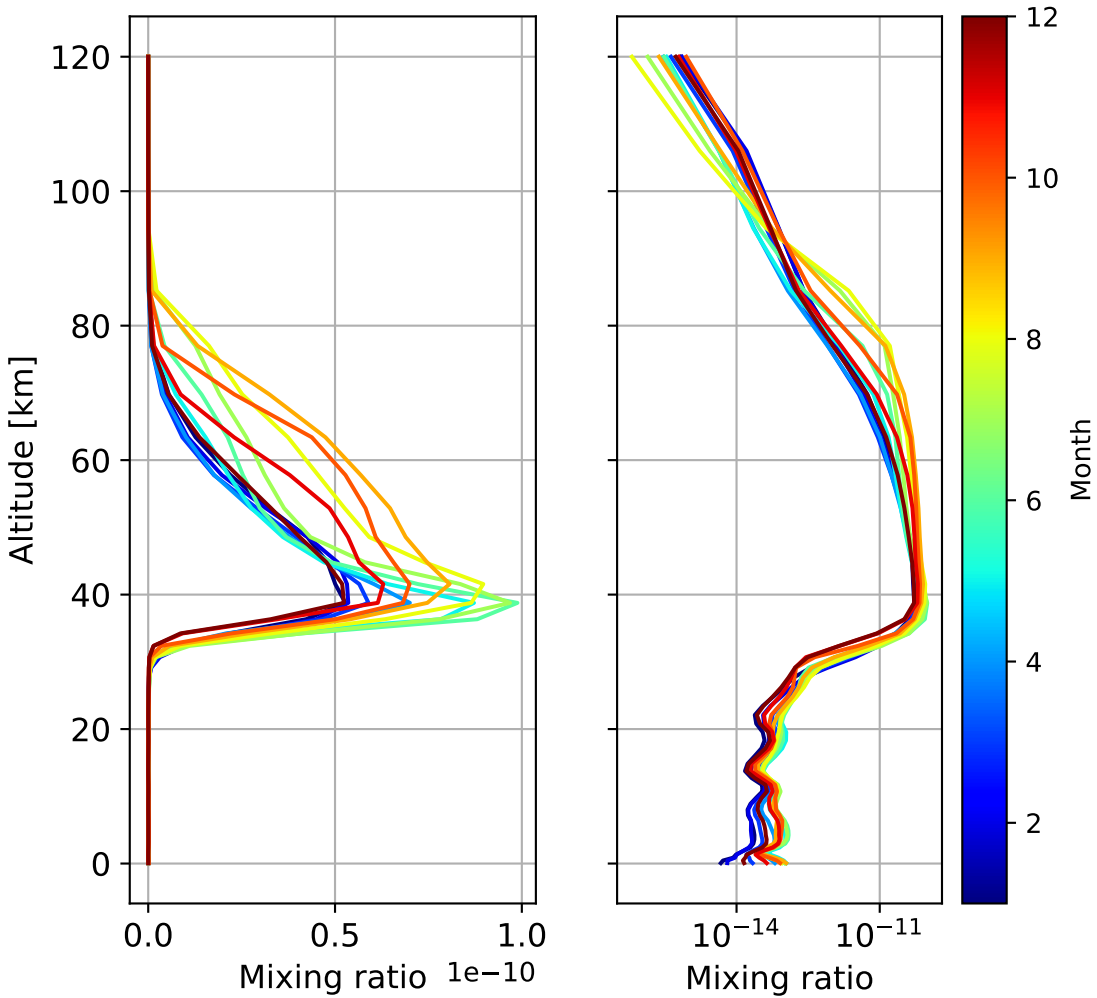
Time Series of vertical profiles (site altitude - 120 km)



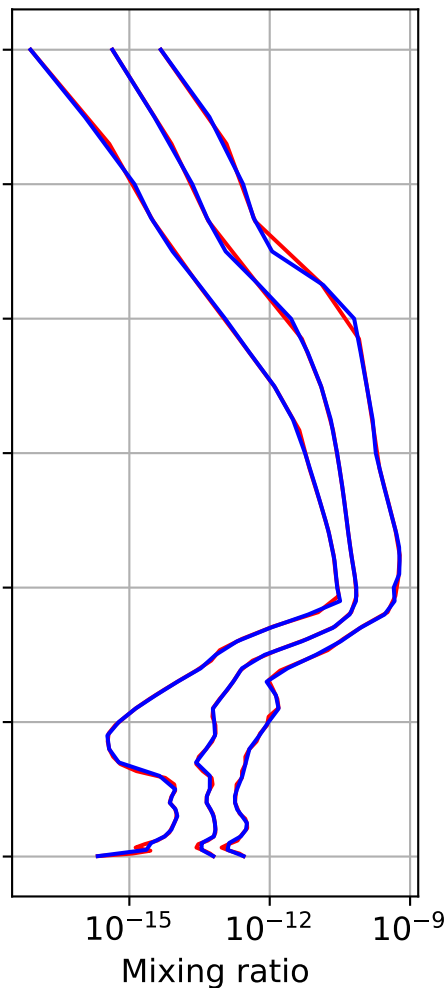
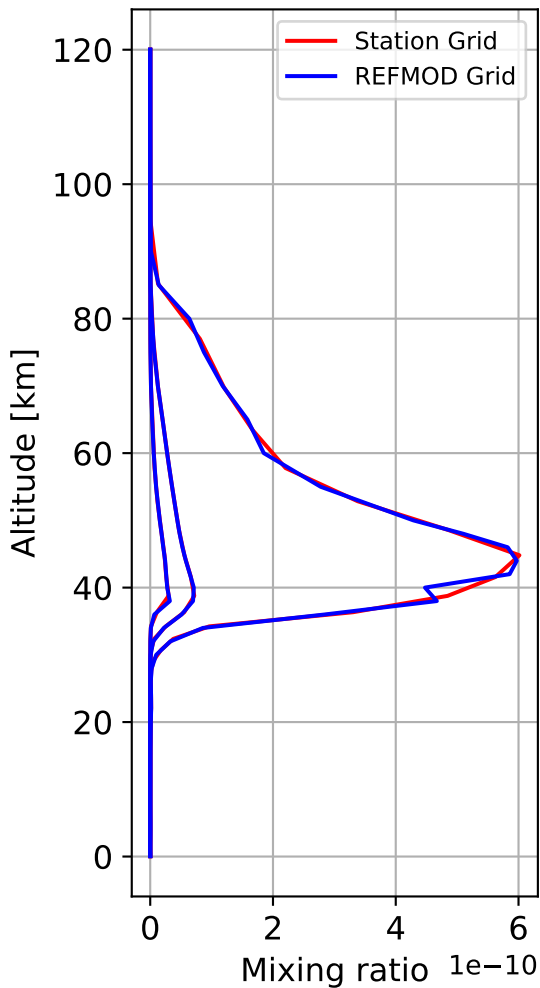
Time Series of vertical profiles (site altitude - 40 km)



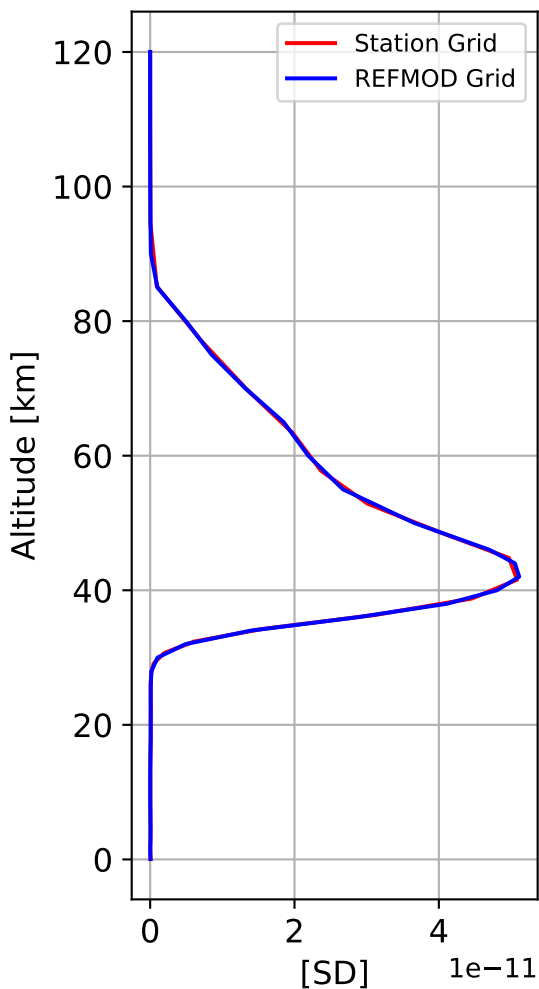
Monthly mean WACCM profile (interpolated to station grid) Paris, 48.97N, 2.37E, 0.06kmasl



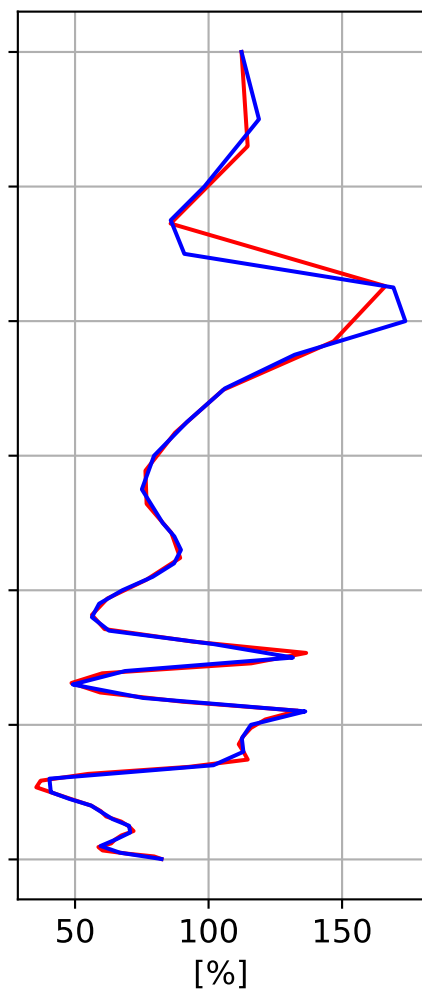
Min, Max, Mean of 732 profiles
Paris, 48.97N, 2.37E, 0.06kmasl



Std. Deviation



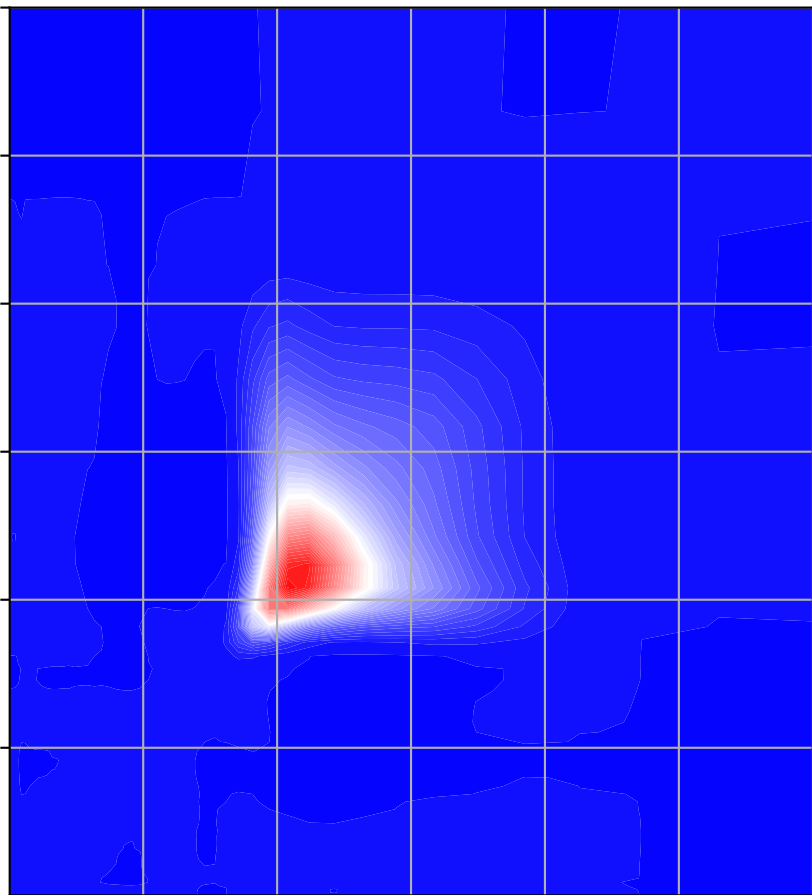
Percent Deviation



Level covariance matrix

1e-21

Altitude [km]

120
100
80
60
40
20

Altitude [km]

Mixing ratio[~ 2]2.4
2.1
1.8
1.5
1.2
0.9
0.6
0.3
0.0