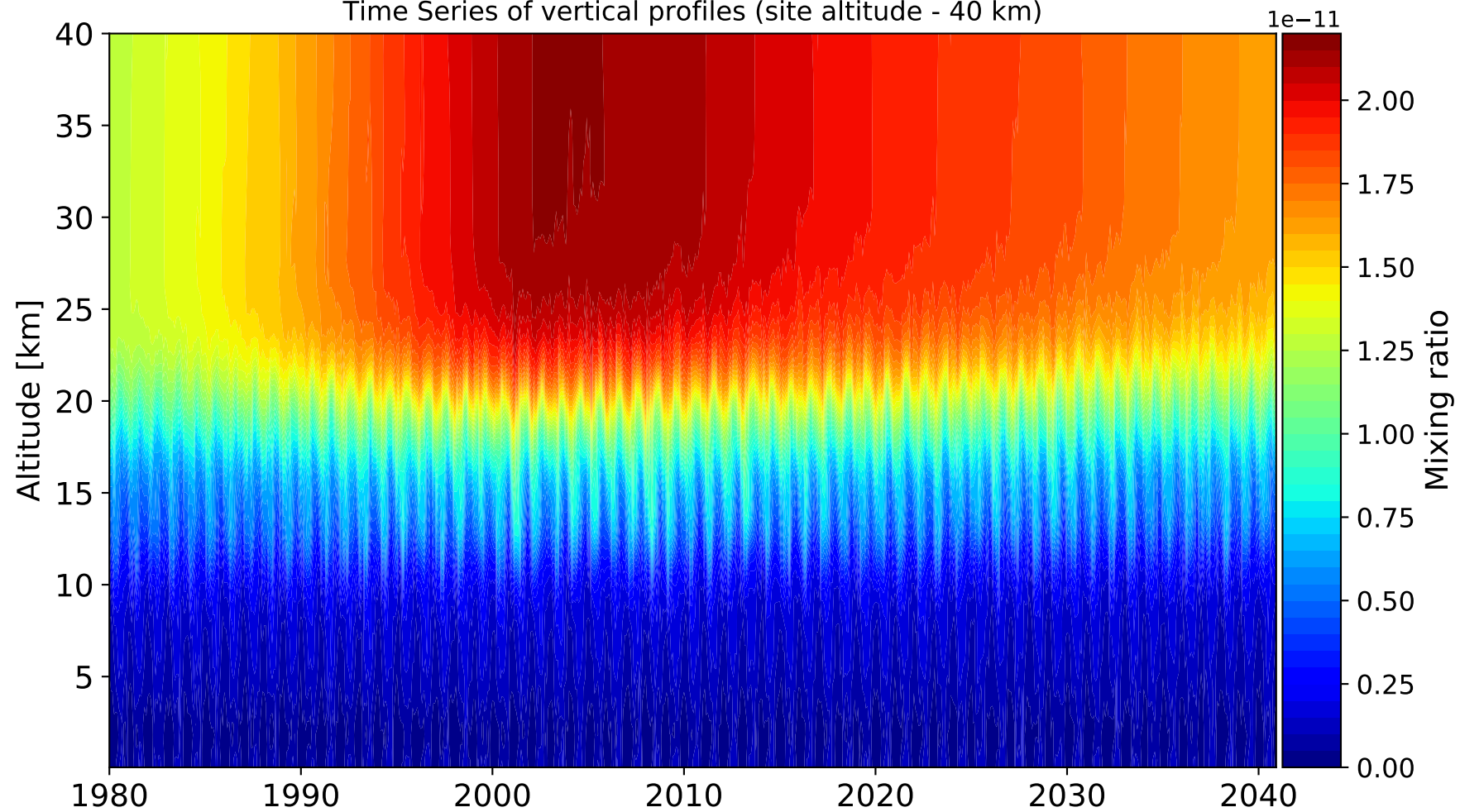
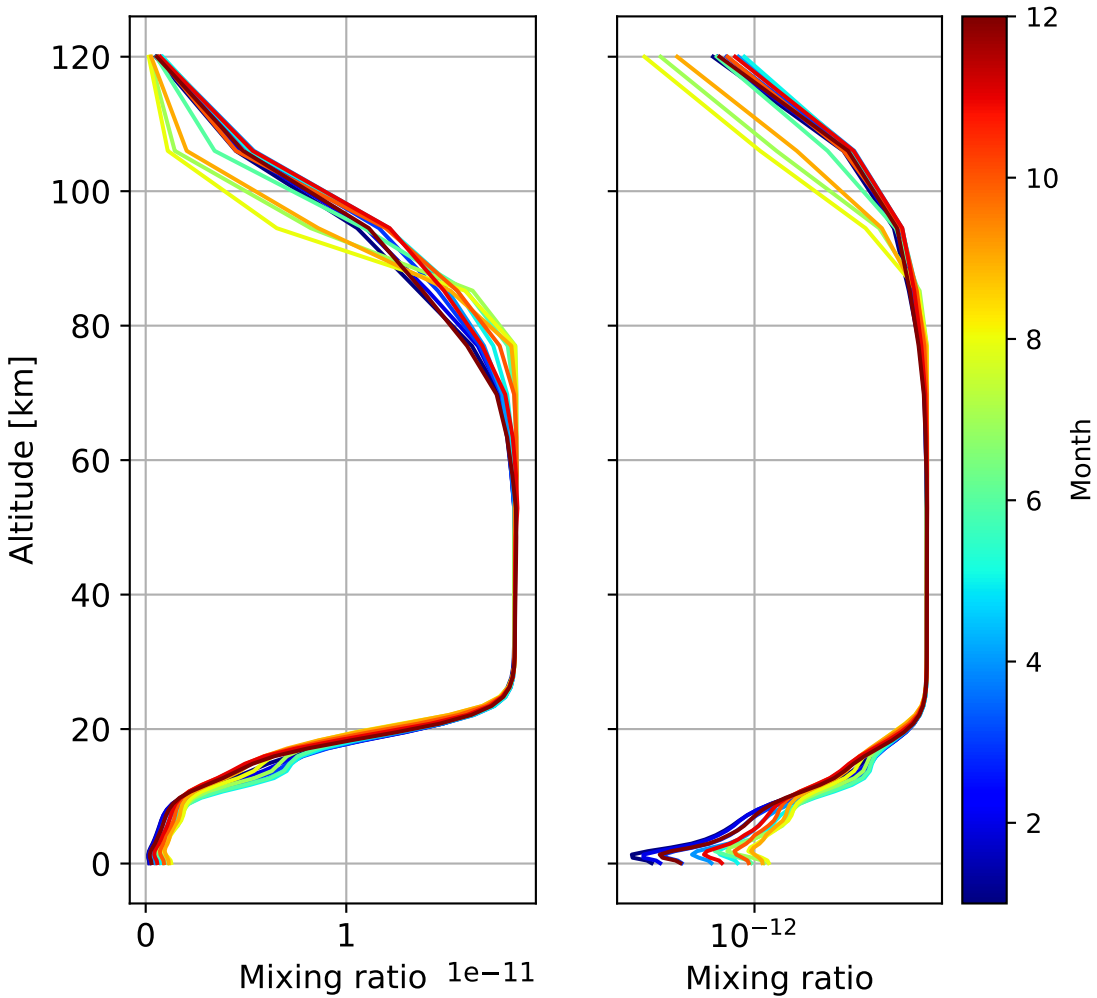


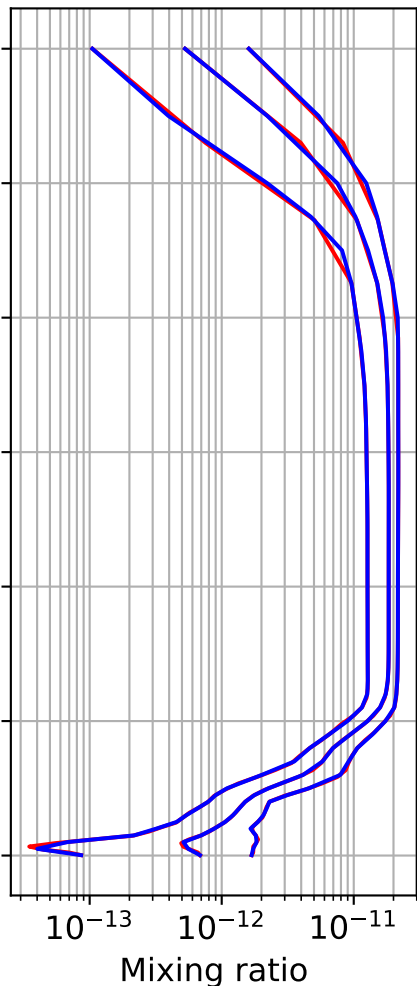
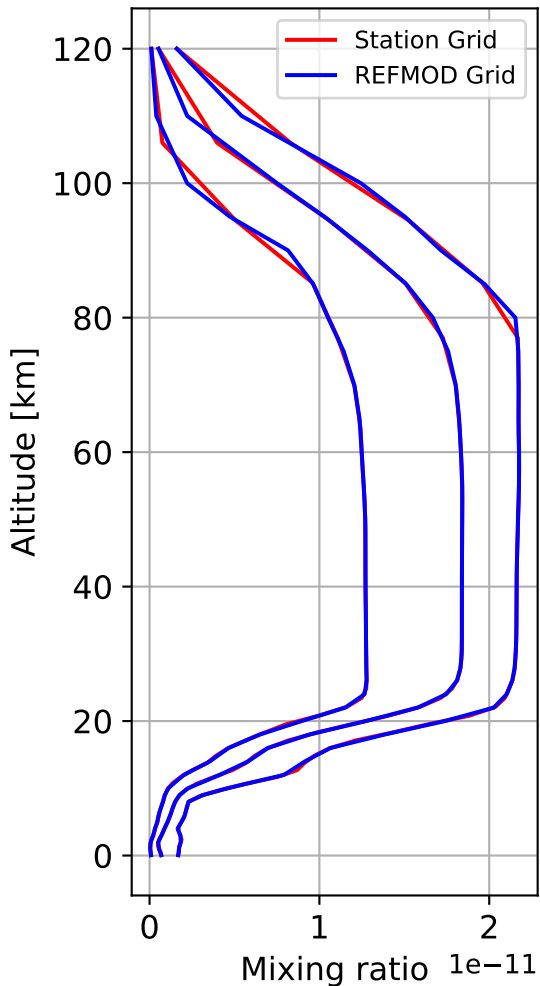
Time Series of vertical profiles (site altitude - 40 km)



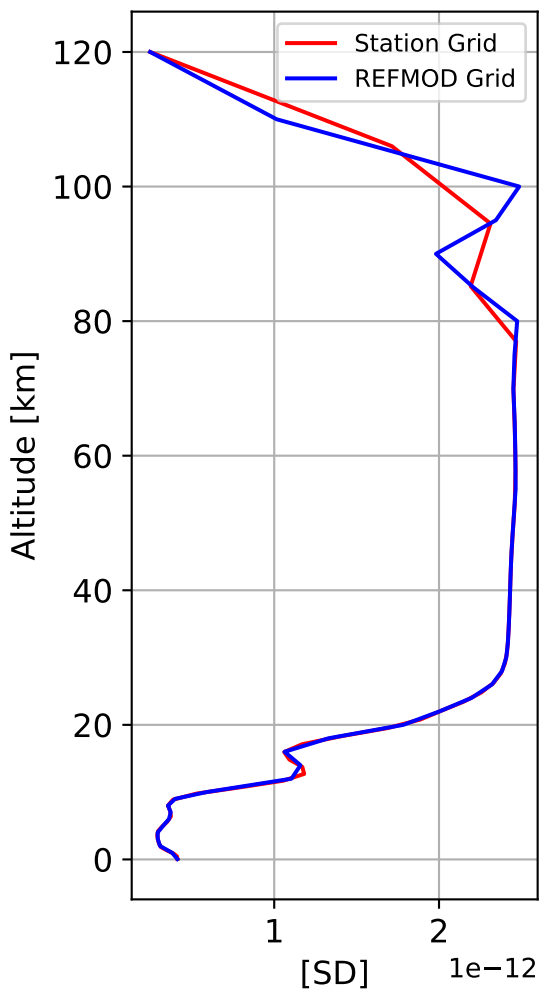
Monthly mean WACCM profile (interpolated to station grid) Paris, 48.97N, 2.37E, 0.06kmasl



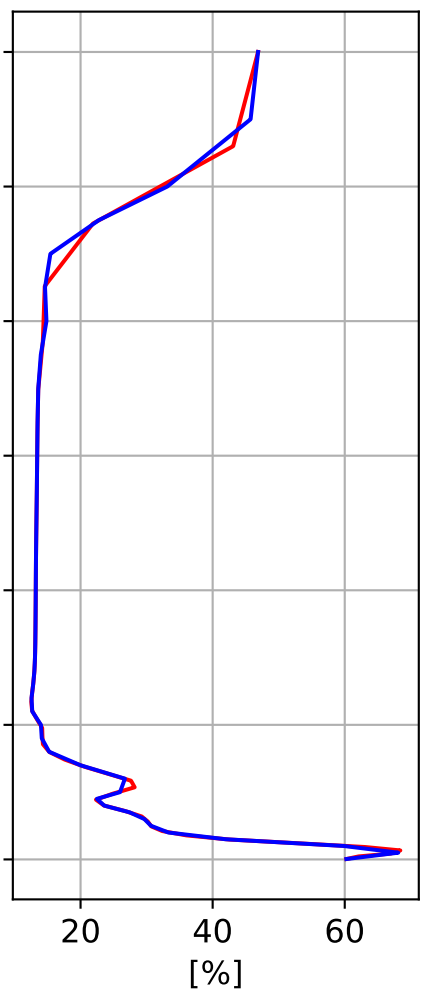
Min, Max, Mean of 732 profiles
Paris, 48.97N, 2.37E, 0.06kmasl



Std. Deviation



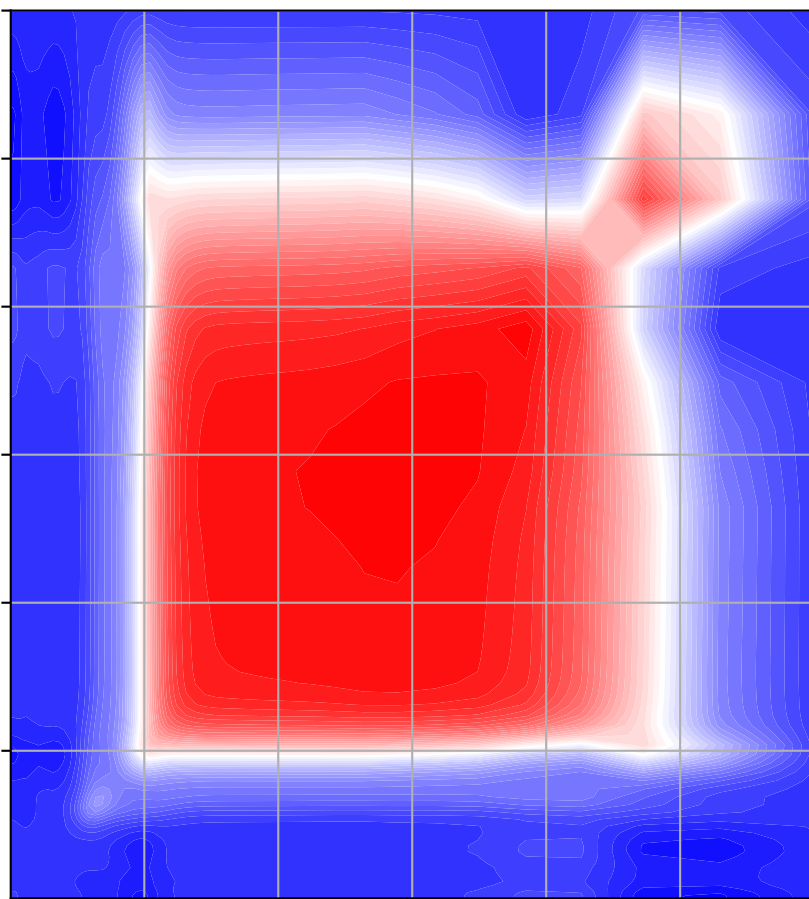
Percent Deviation



Level covariance matrix

 $1e-24$

Altitude [km]

120
100
80
60
40
20

20

Altitude [km]

40

60

80

100

120

0.00

0.75

1.50

2.25

3.00

3.75

4.50

5.25

6.00