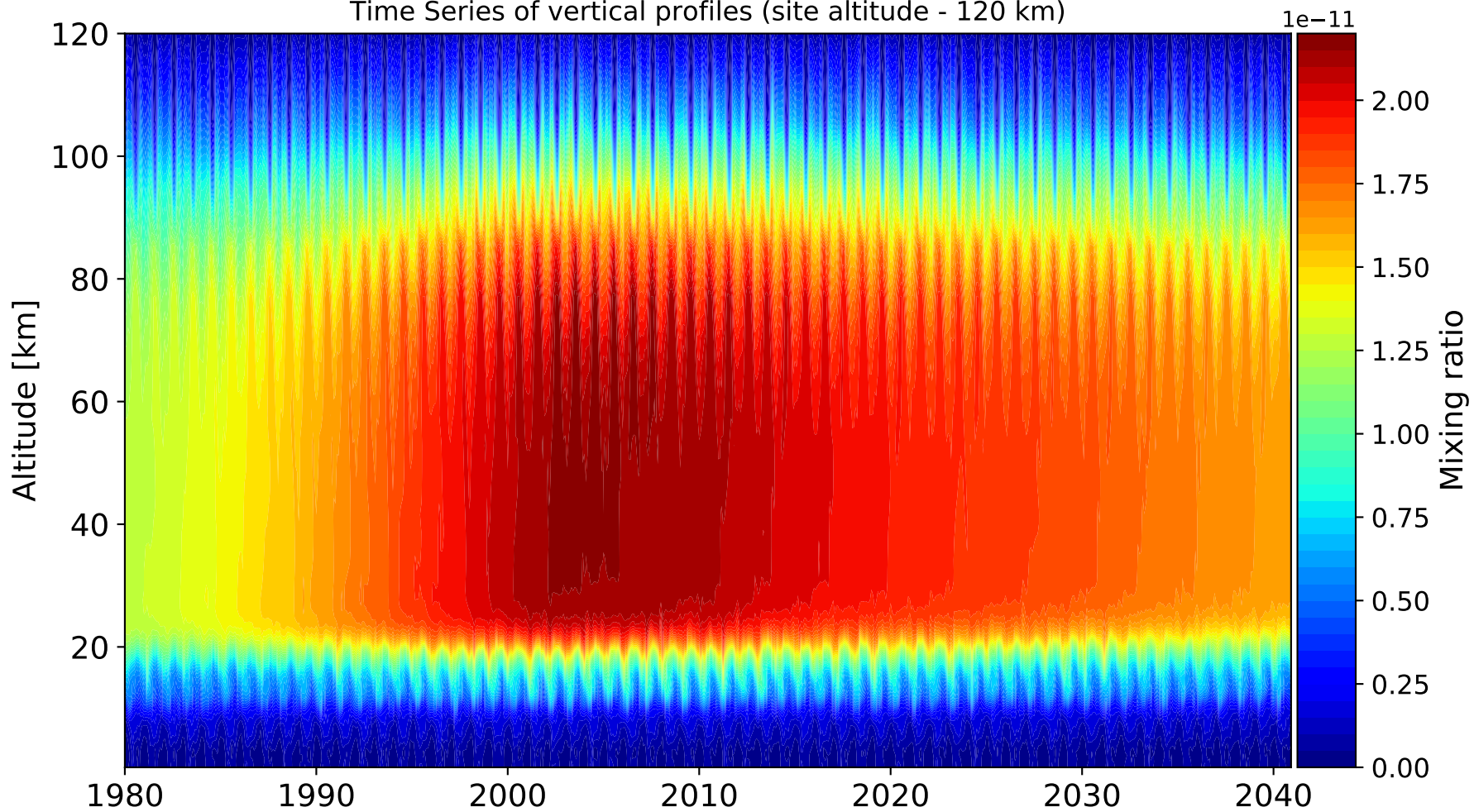
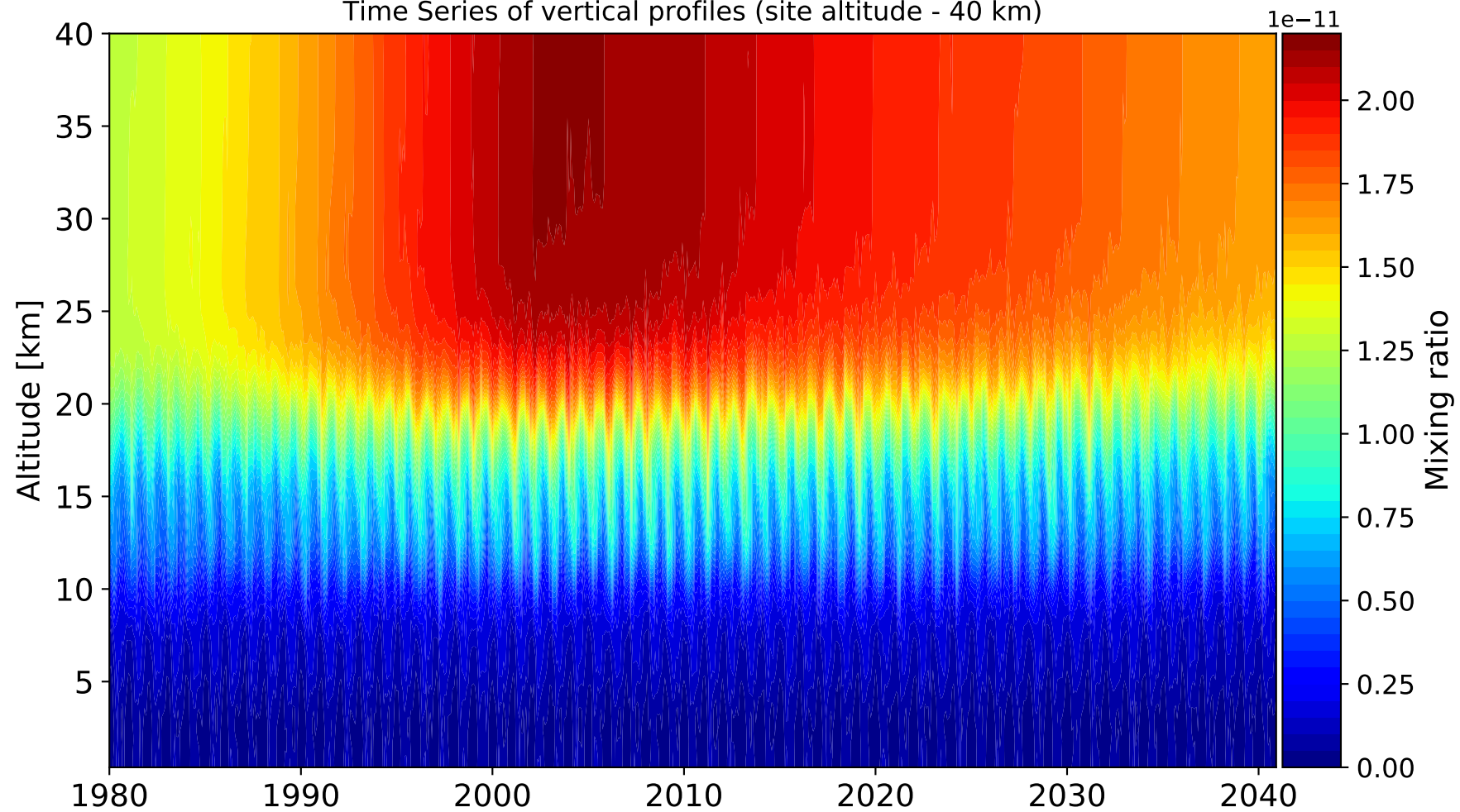


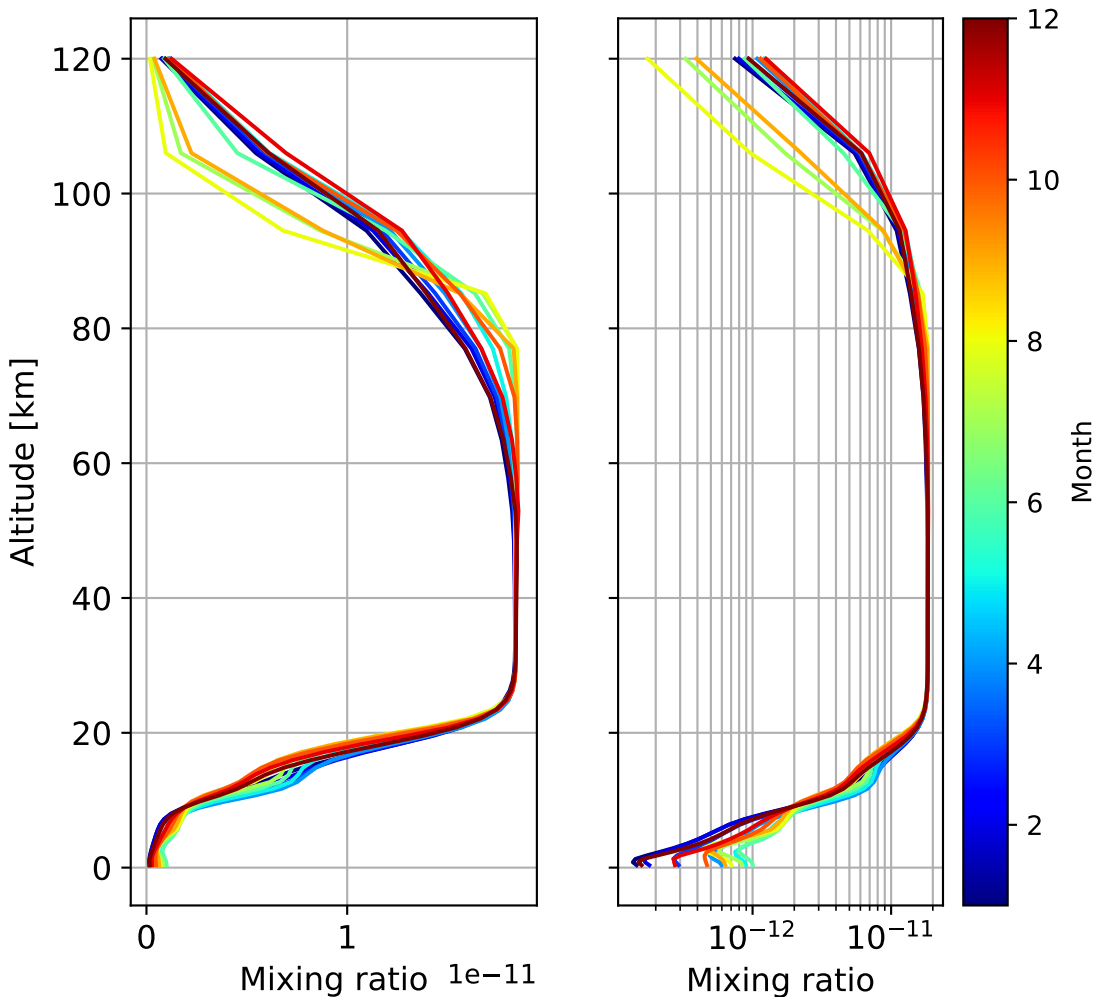
Time Series of vertical profiles (site altitude - 120 km)



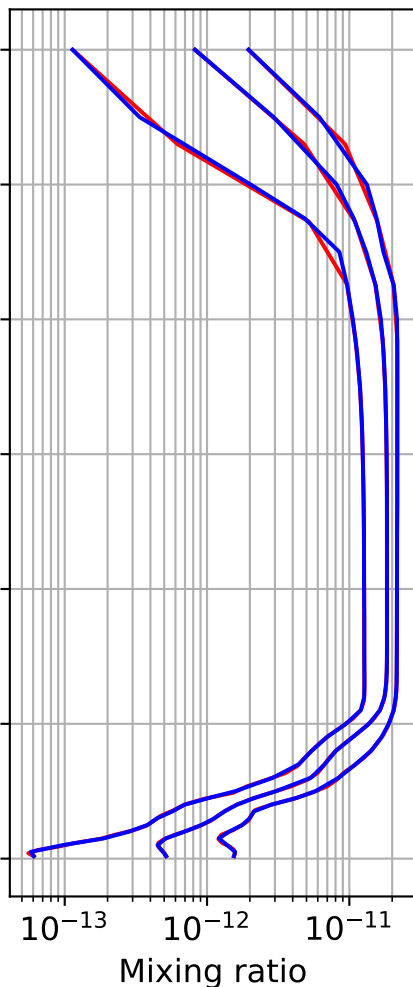
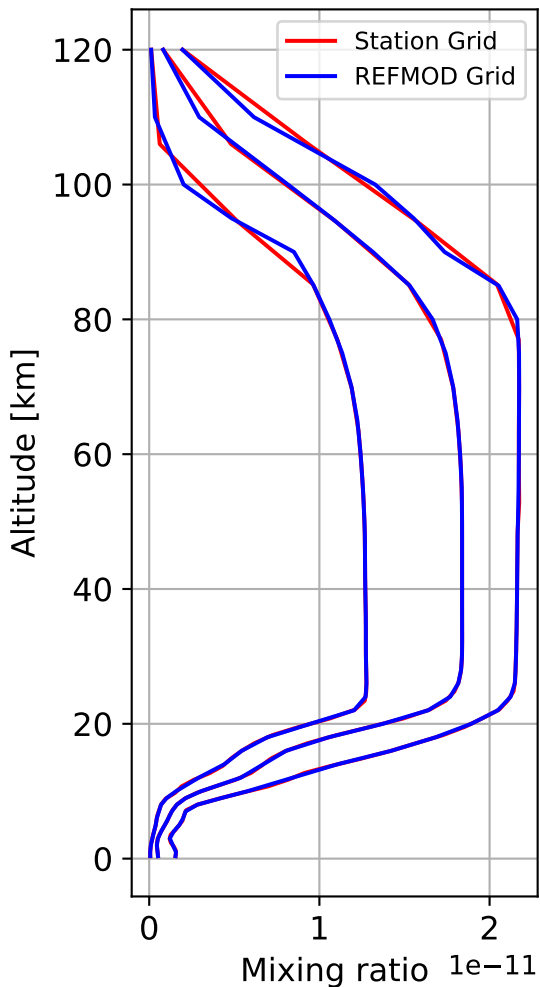
Time Series of vertical profiles (site altitude - 40 km)



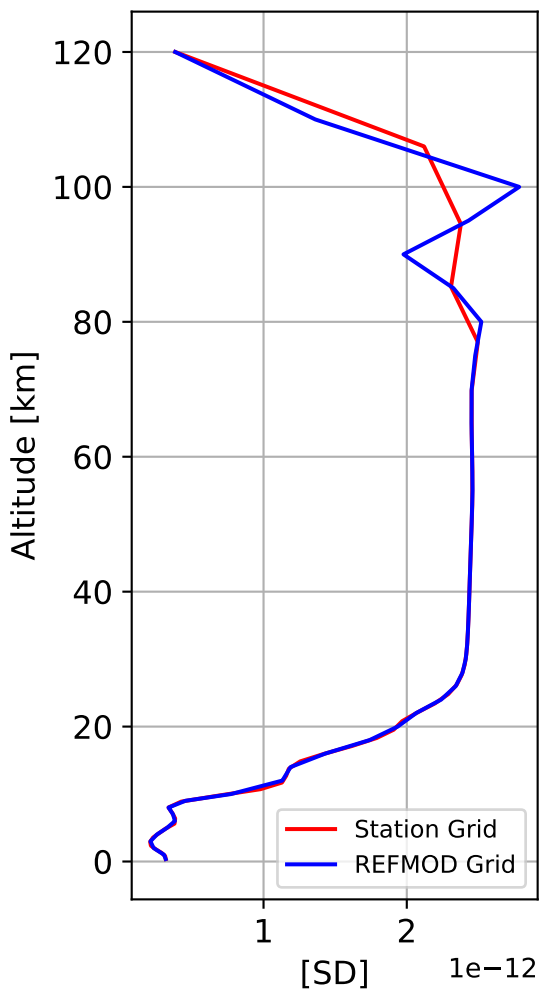
Monthly mean WACCM profile (interpolated to station grid)
Fort_McMurray, 56.65N, 248.78E, 0.369kmasl



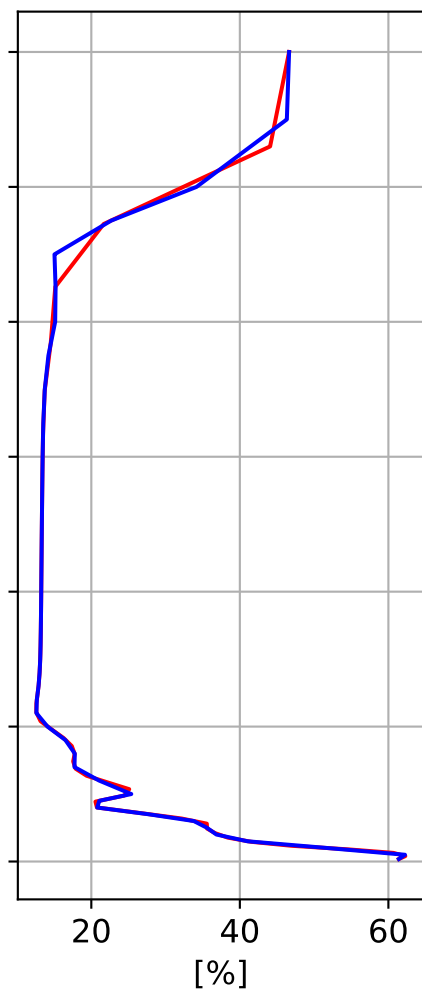
Min, Max, Mean of 732 profiles
Fort_McMurray, 56.65N, 248.78E, 0.369kmasl



Std. Deviation



Percent Deviation

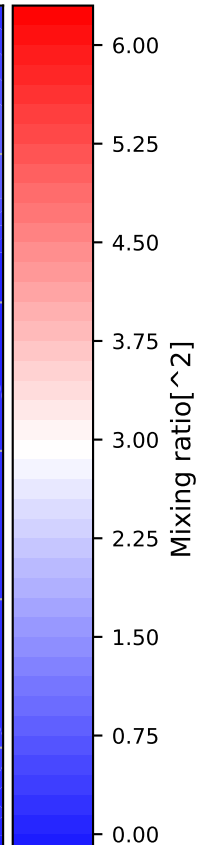
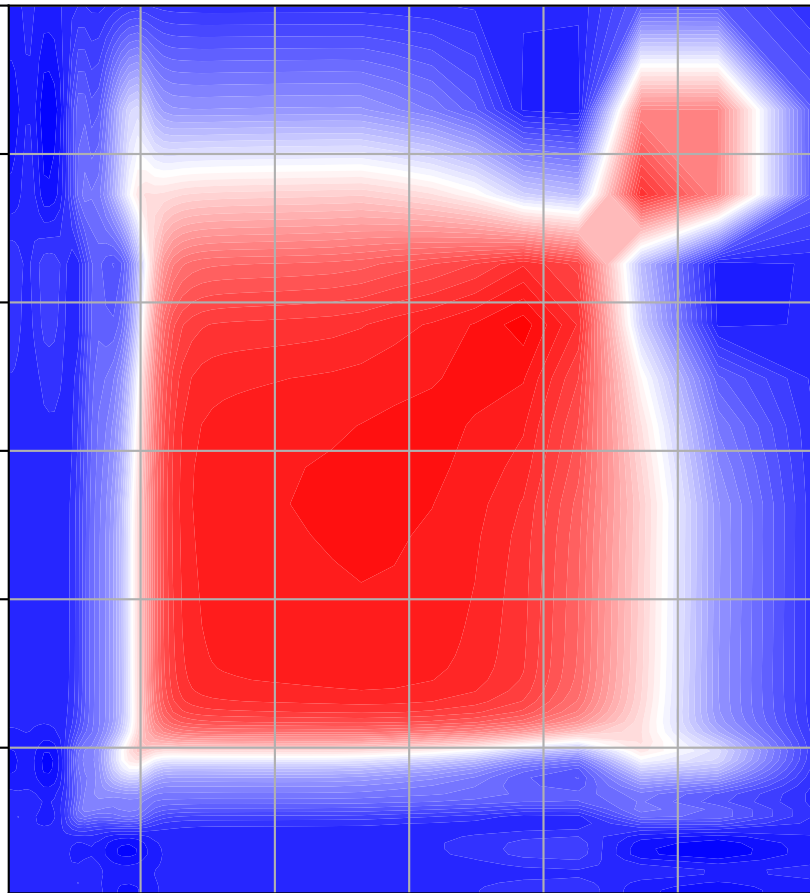


Level covariance matrix

1e-24

Altitude [km]

120
100
80
60
40
20



Altitude [km]