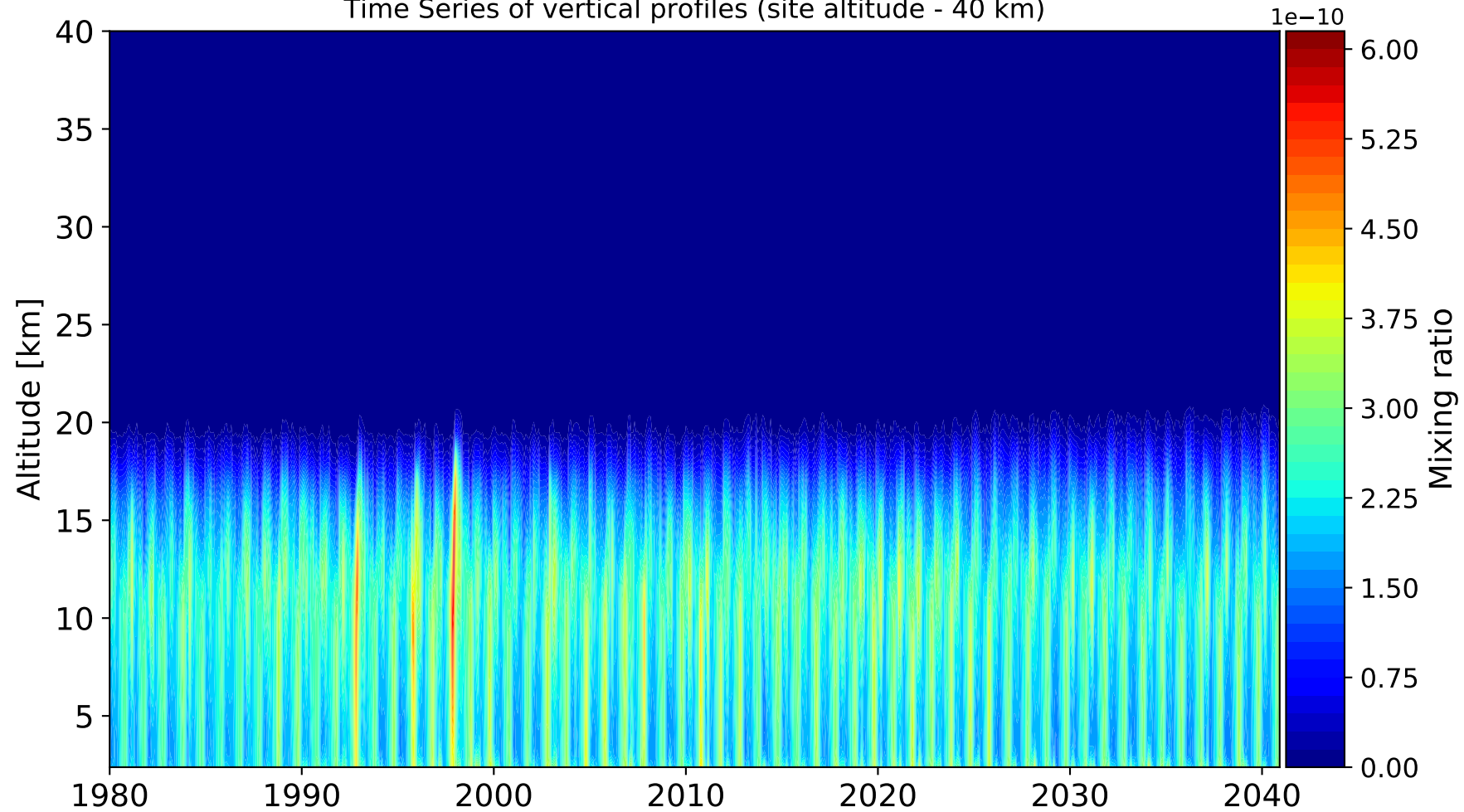
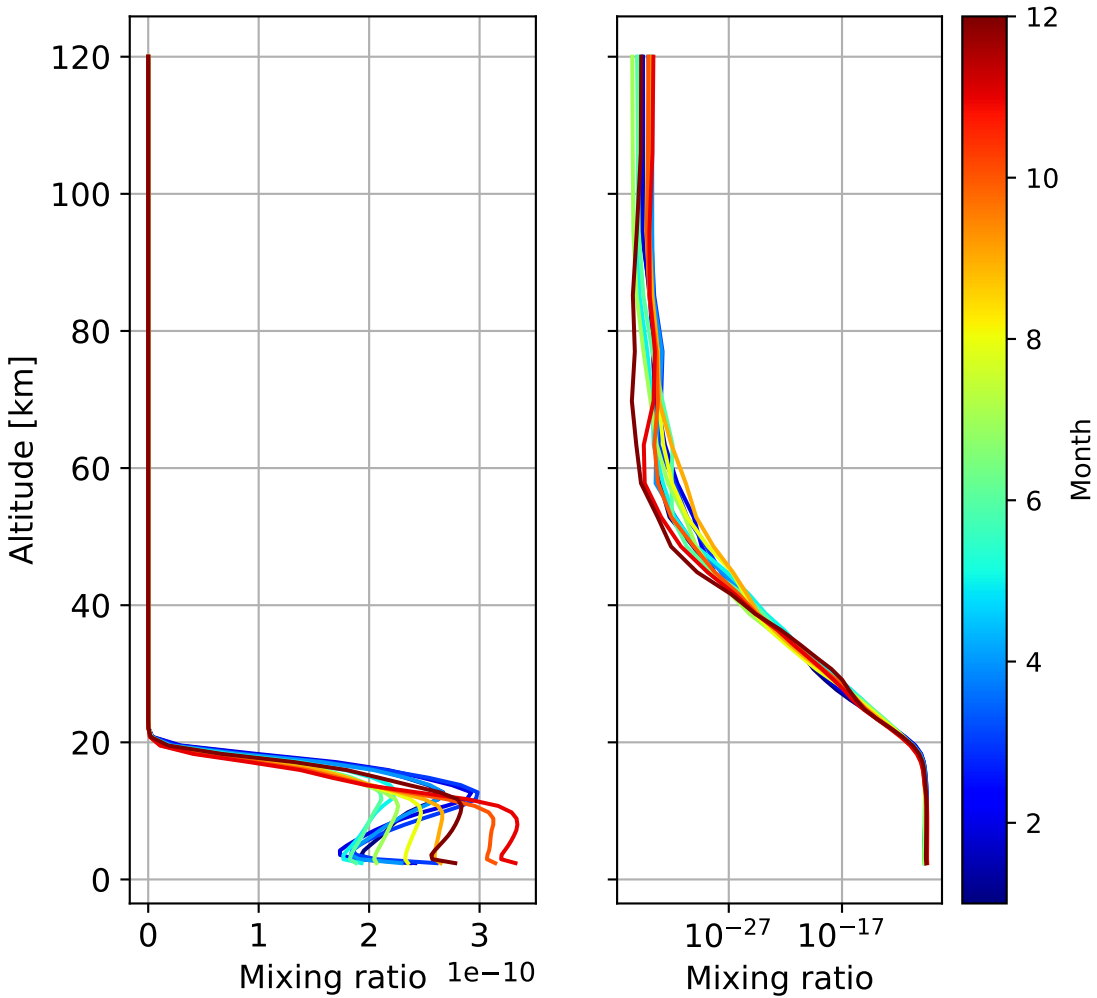


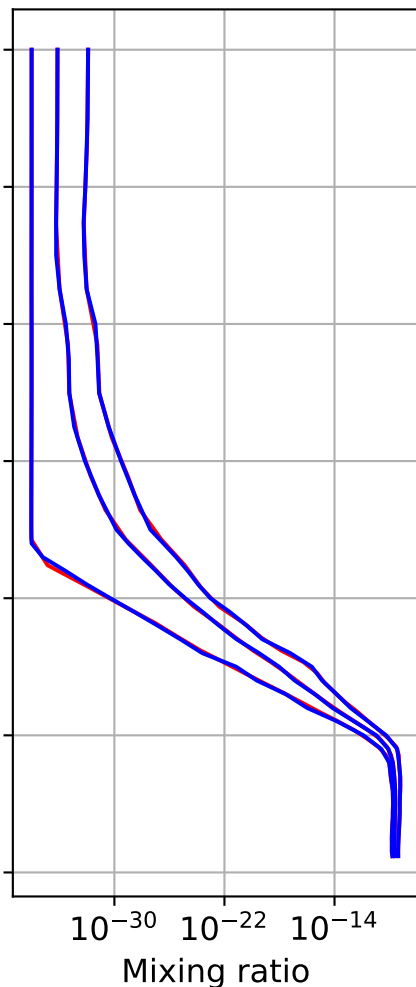
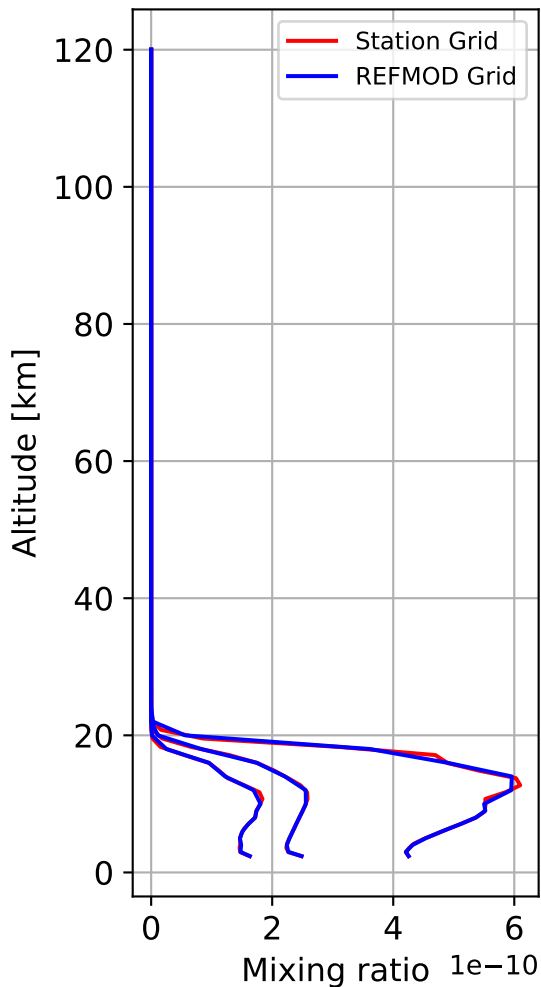
Time Series of vertical profiles (site altitude - 40 km)



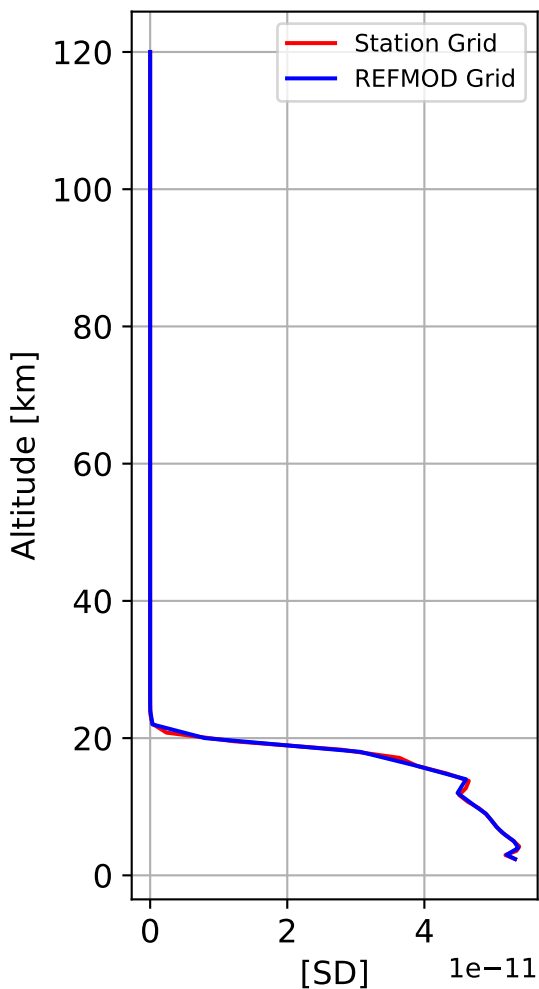
Monthly mean WACCM profile (interpolated to station grid) CTIO, -30.169N, 289.194E, 2.379kmasl



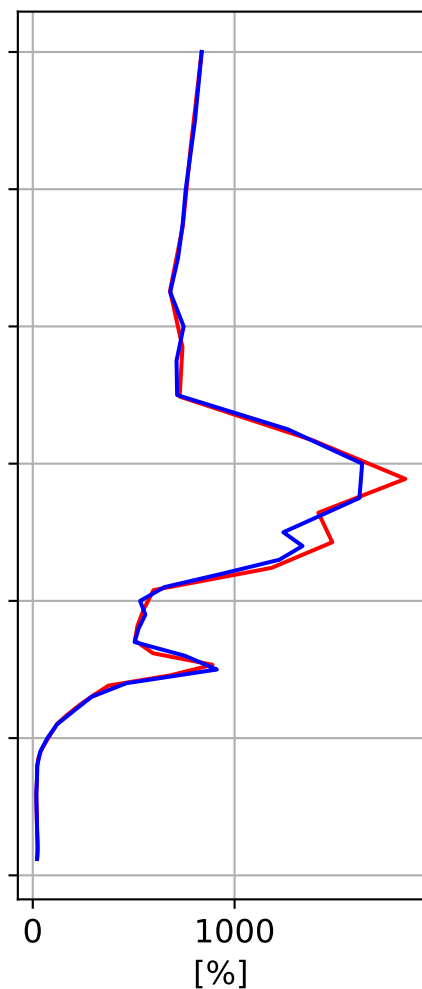
Min, Max, Mean of 732 profiles
CTIO, -30.169N, 289.194E, 2.379kmasl



Std. Deviation



Percent Deviation

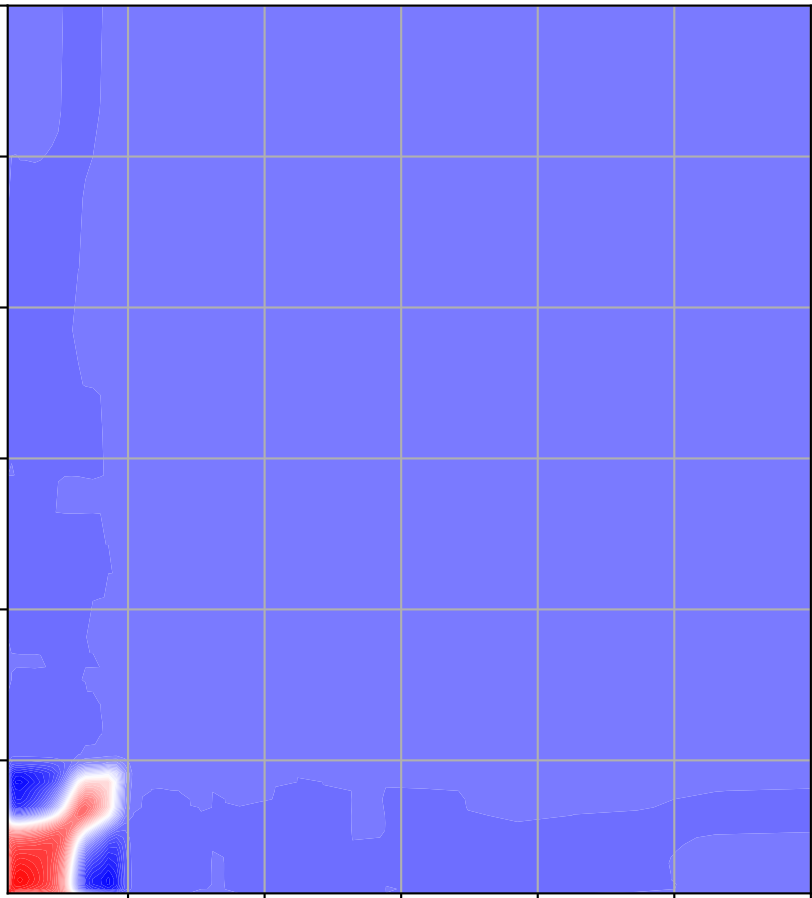


Level covariance matrix

1e-21

Altitude [km]

120
100
80
60
40
20



Mixing ratio[²]

2.8
2.4
2.0
1.6
1.2
0.8
0.4
0.0
-0.4
-0.8

Altitude [km]