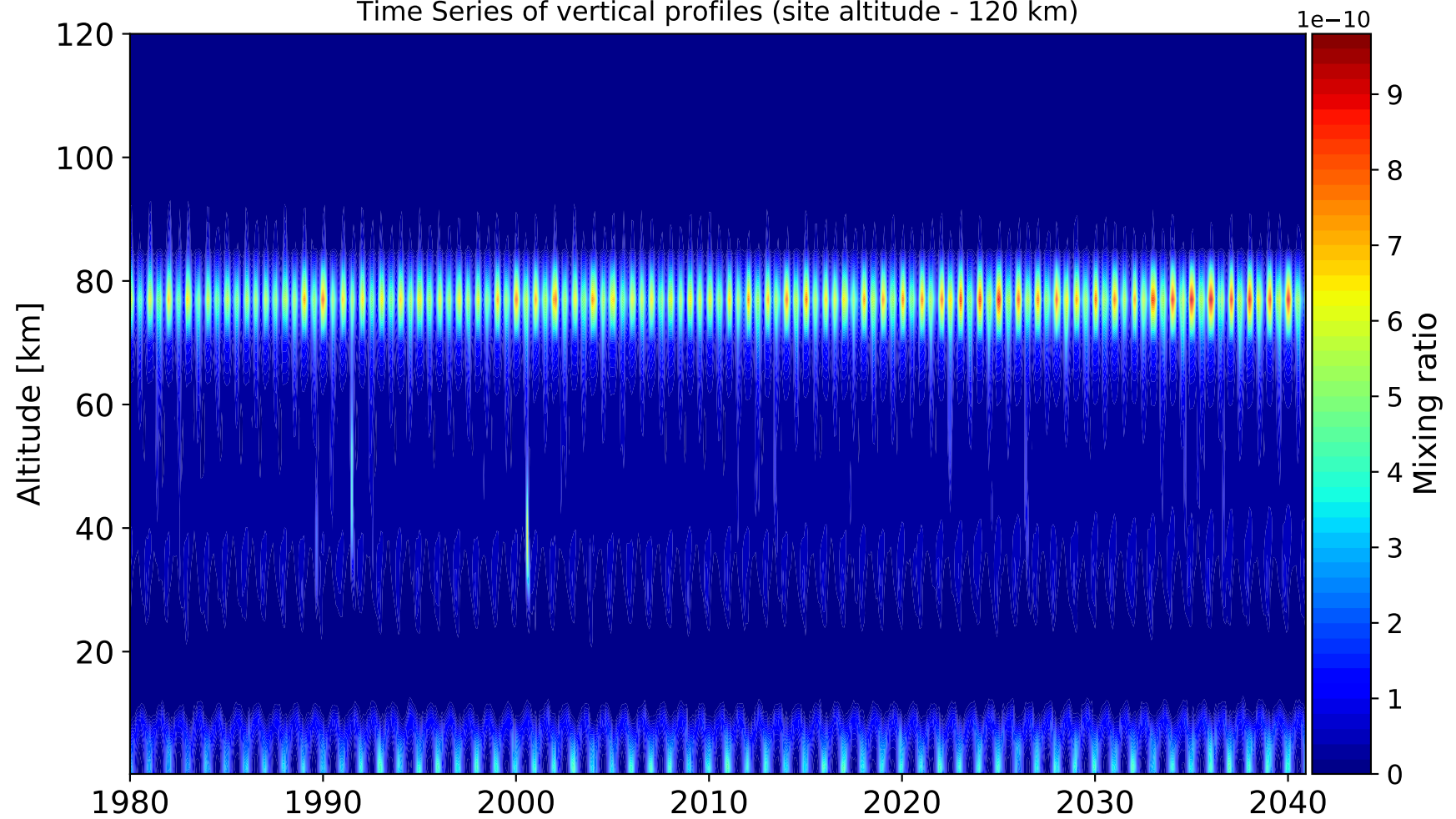
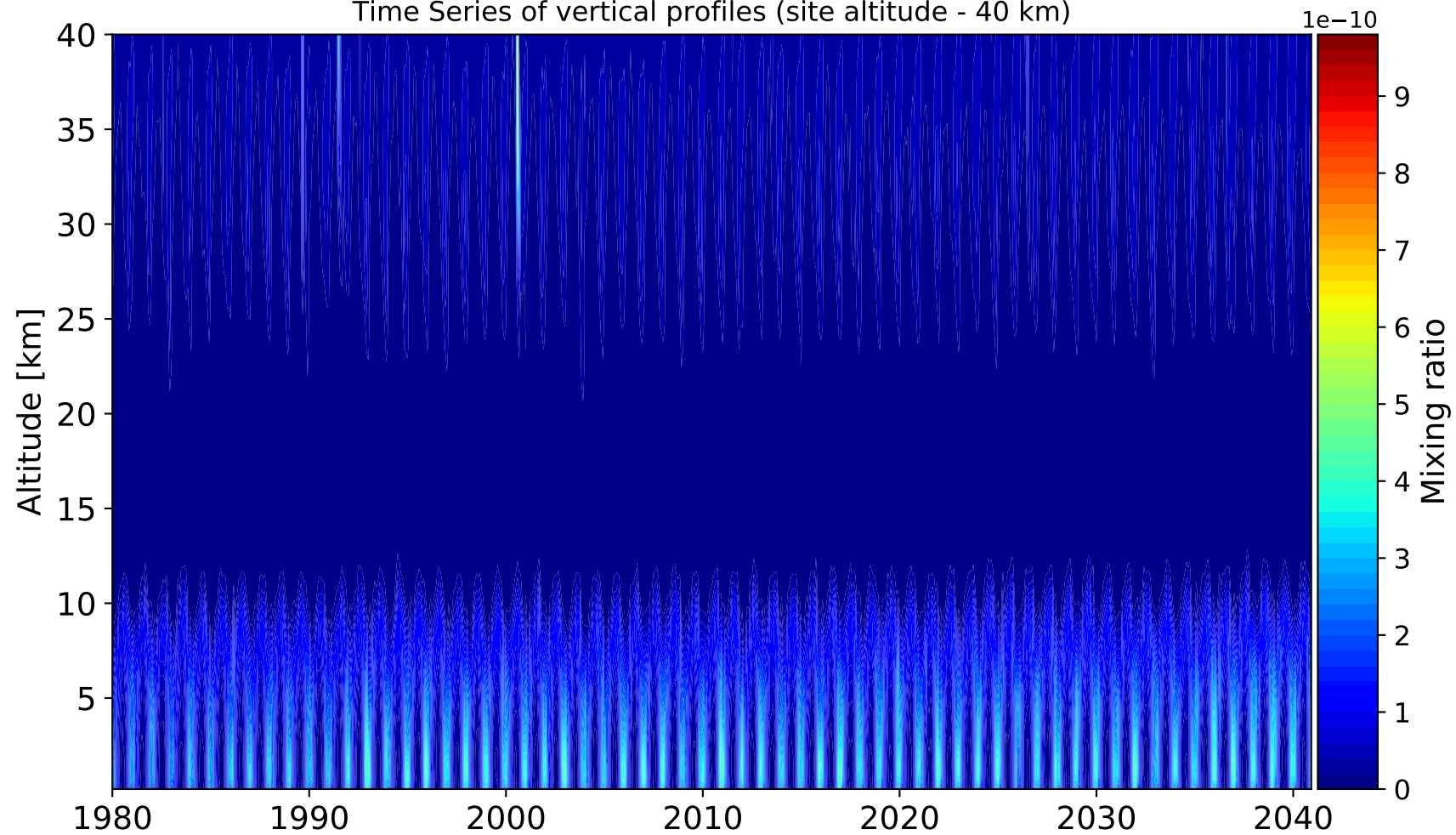


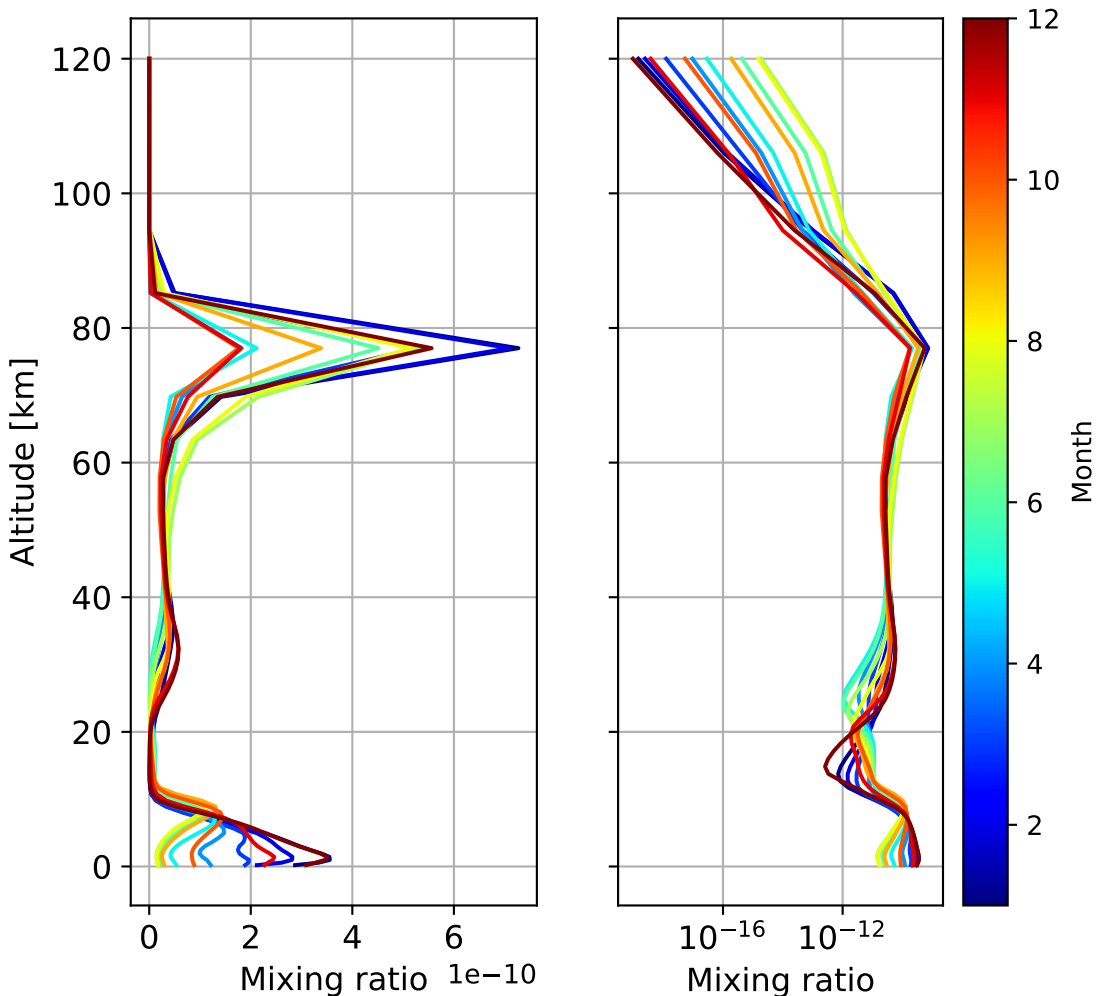
Time Series of vertical profiles (site altitude - 120 km)



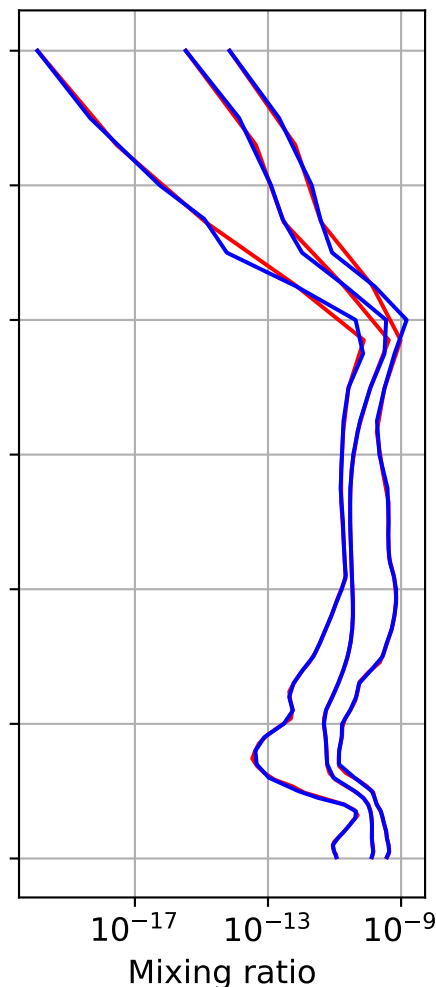
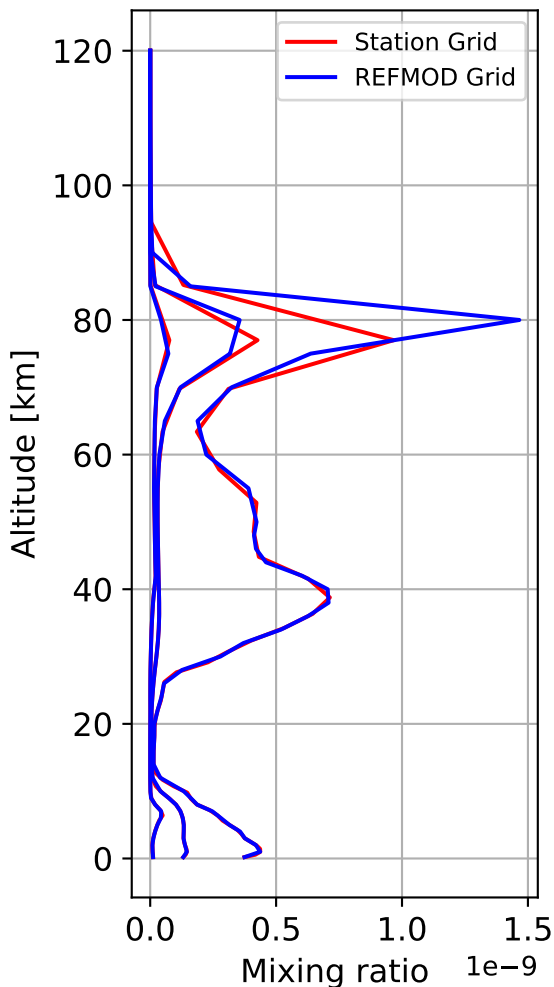
Time Series of vertical profiles (site altitude - 40 km)



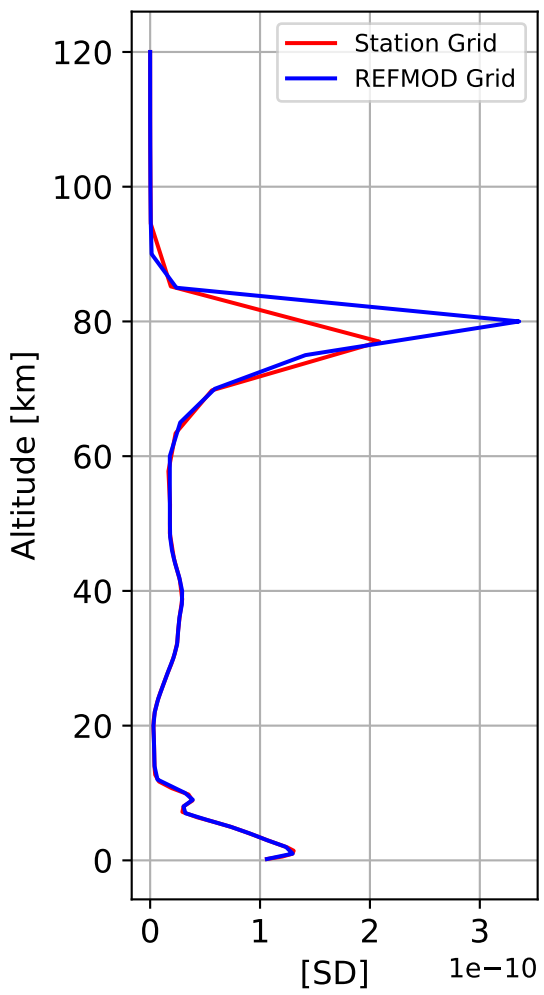
Monthly mean WACCM profile (interpolated to station grid) Arrival_Heights, -78.83N, 166.66E, 0.2kmasl



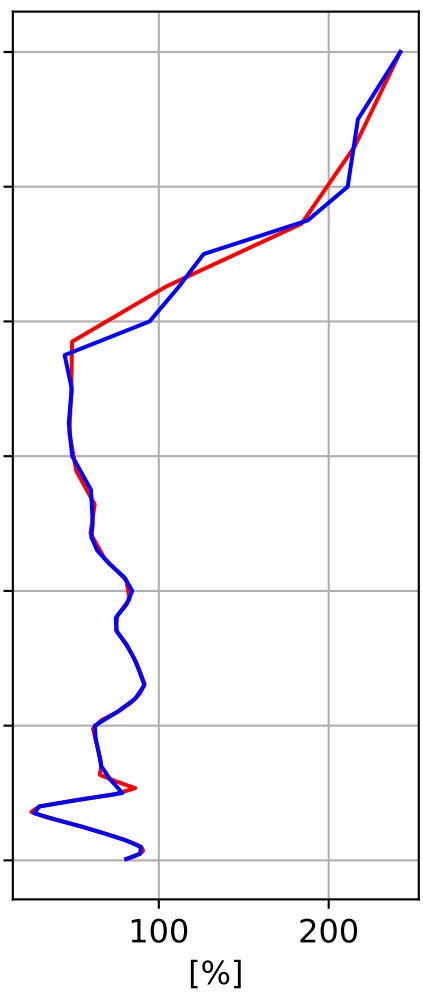
Min, Max, Mean of 732 profiles
Arrival_Heights, -78.83N, 166.66E, 0.2kmasl



Std. Deviation



Percent Deviation

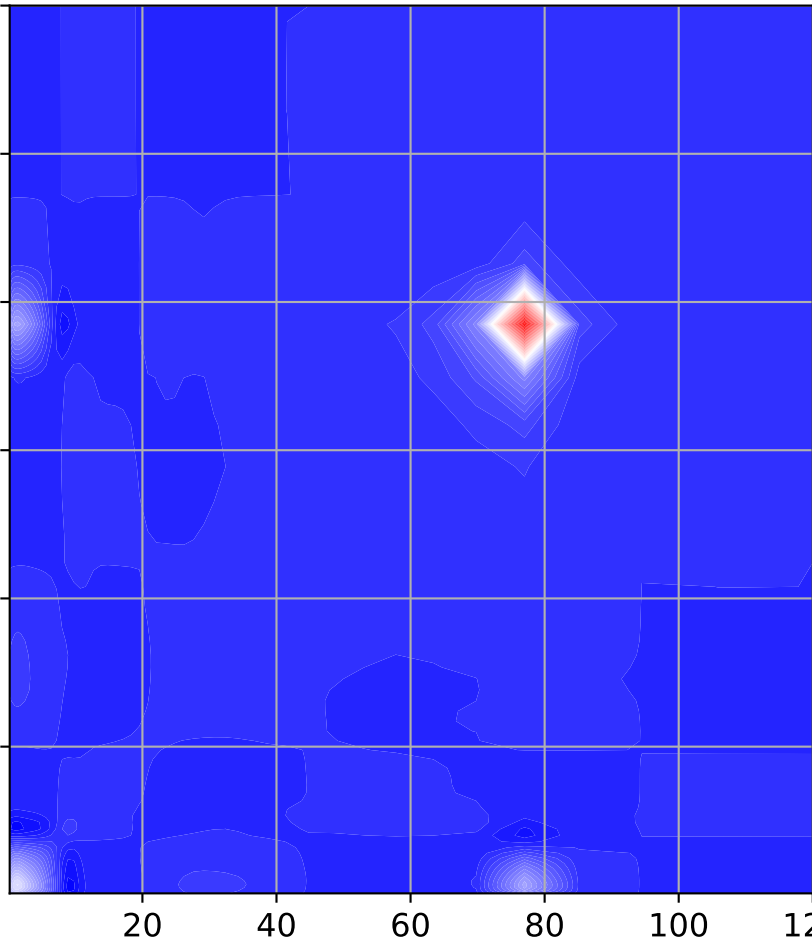


Level covariance matrix

1e-20

Altitude [km]

120
100
80
60
40
20



Altitude [km]

20 40 60 80 100 120

Mixing ratio[²]

4.0
3.5
3.0
2.5
2.0
1.5
1.0
0.5
0.0