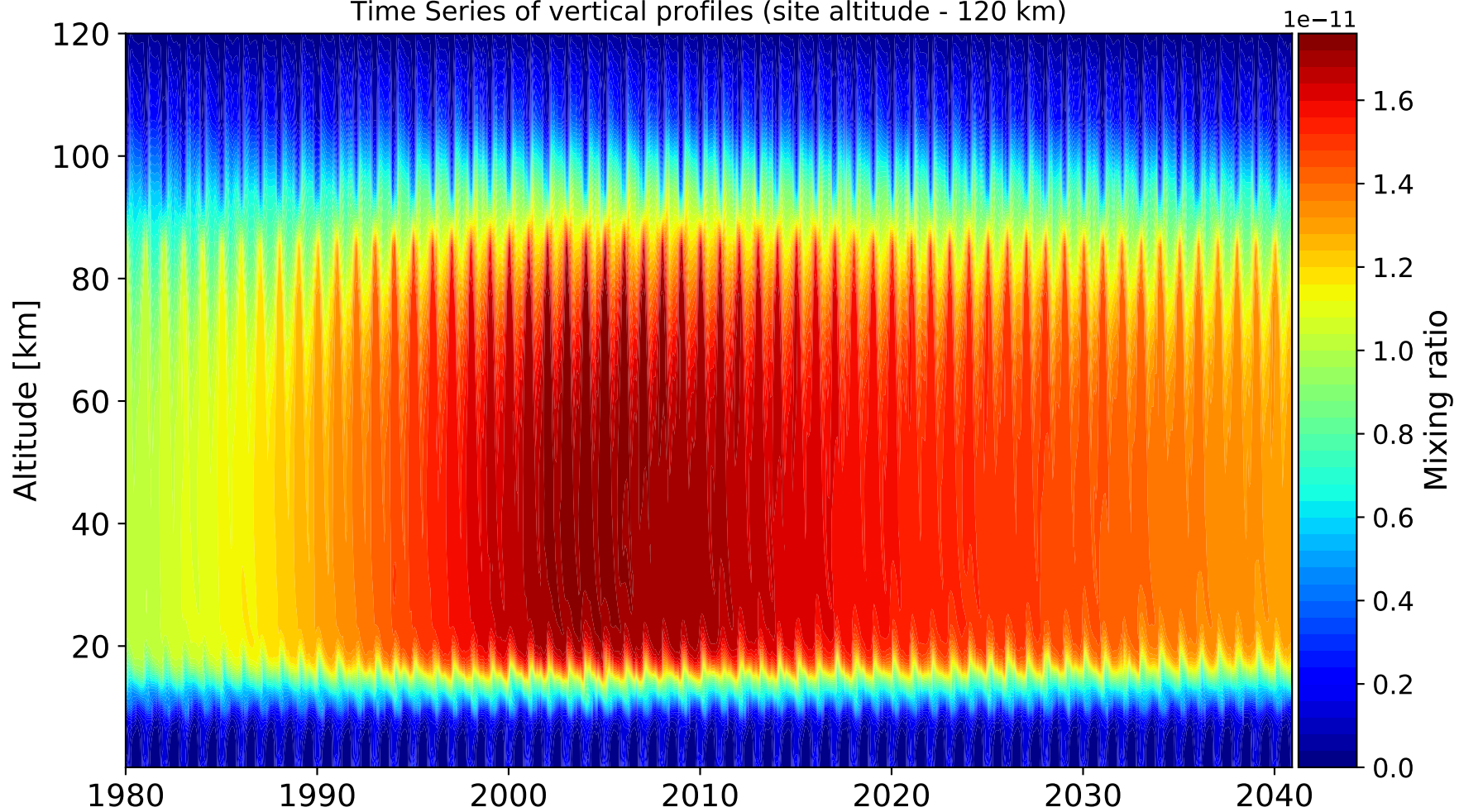
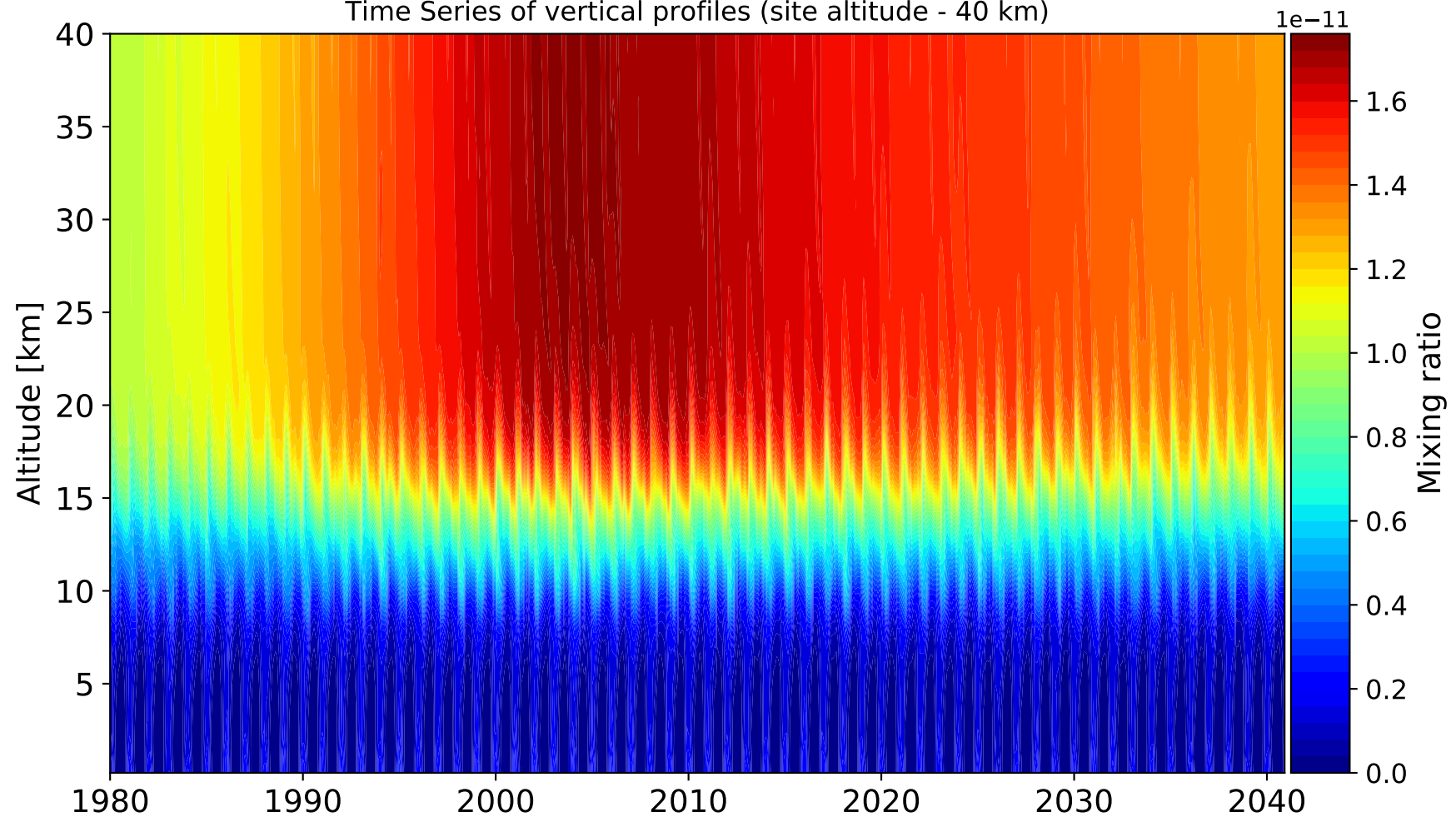


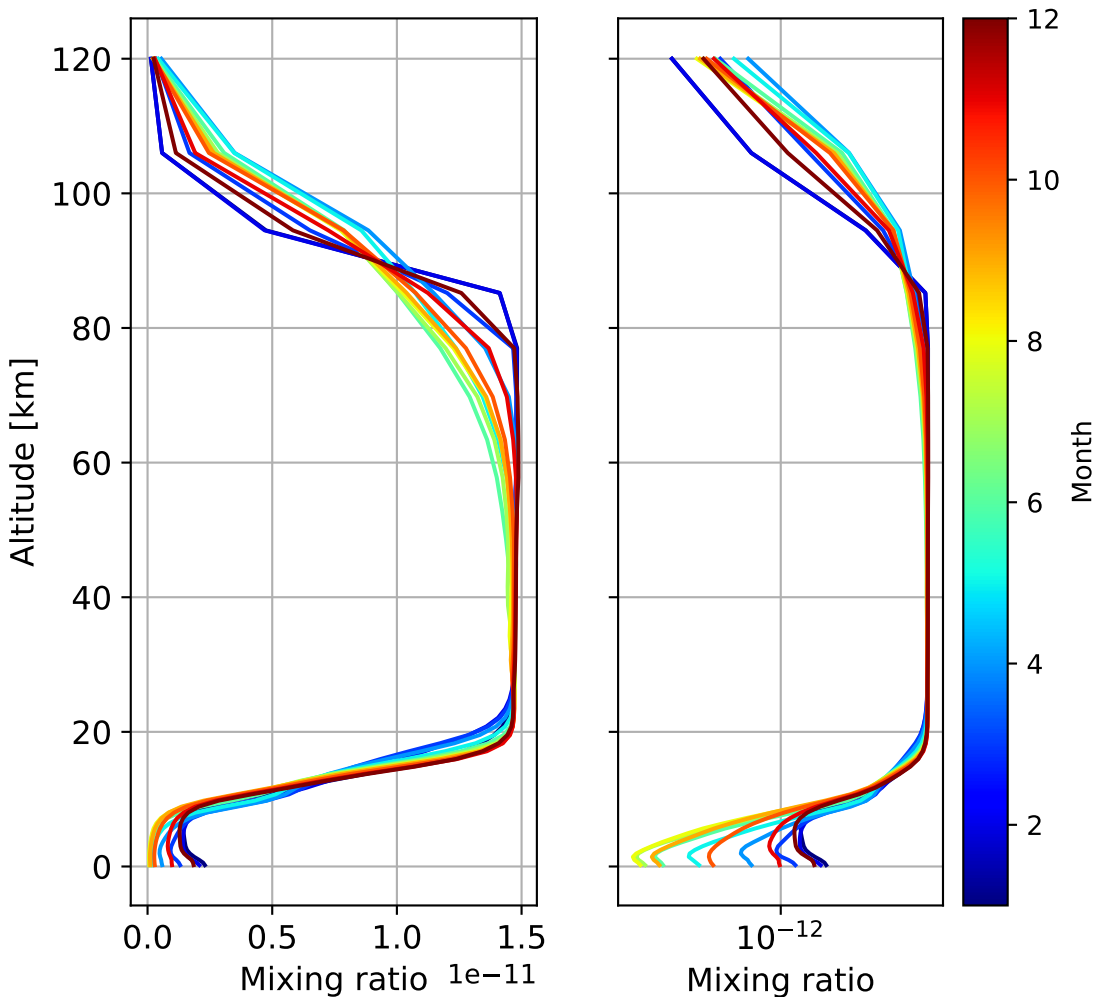
Time Series of vertical profiles (site altitude - 120 km)



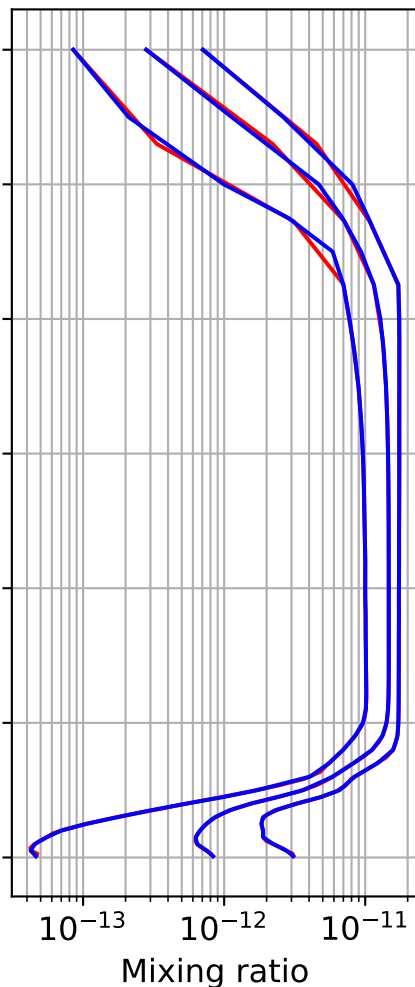
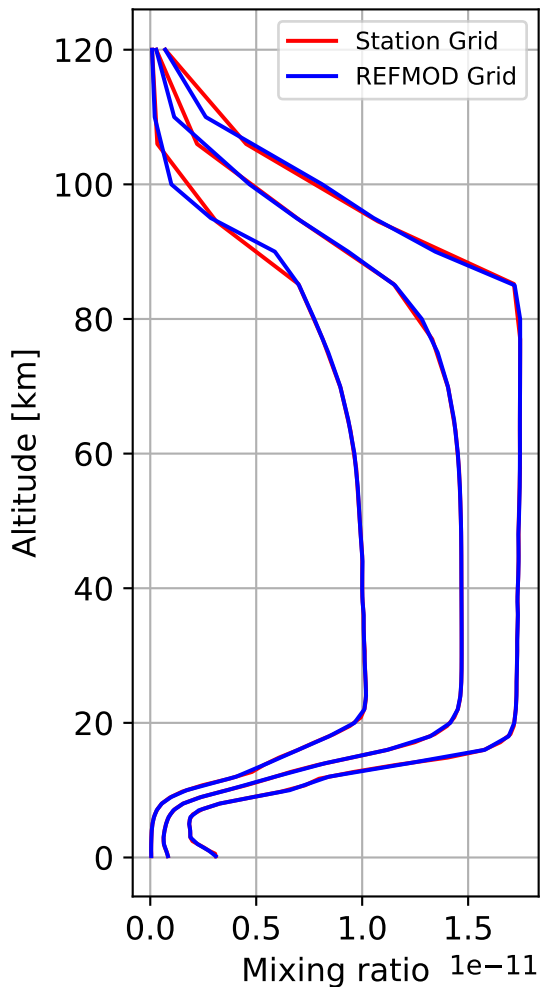
Time Series of vertical profiles (site altitude - 40 km)



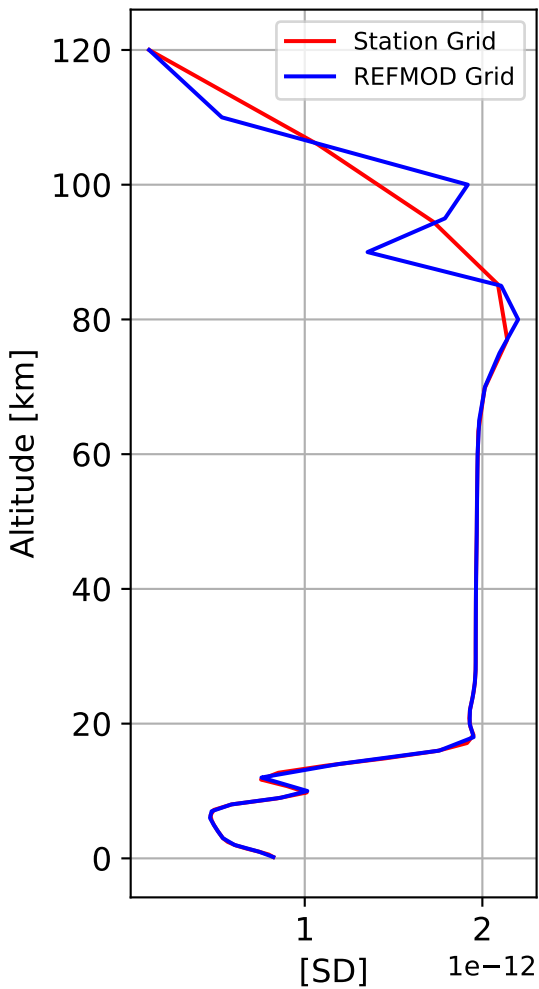
Monthly mean WACCM profile (interpolated to station grid)
Arrival_Heights, -78.83N, 166.66E, 0.2kmasl



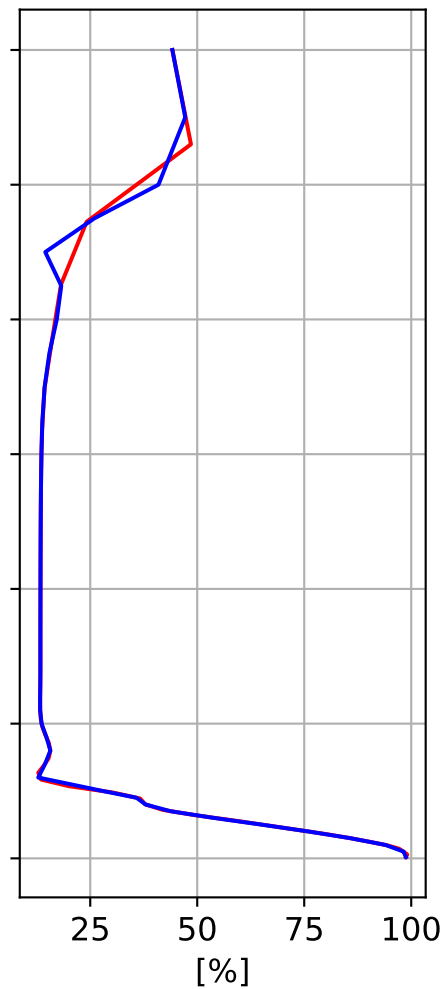
Min, Max, Mean of 732 profiles
Arrival_Heights, -78.83N, 166.66E, 0.2kmasl



Std. Deviation



Percent Deviation

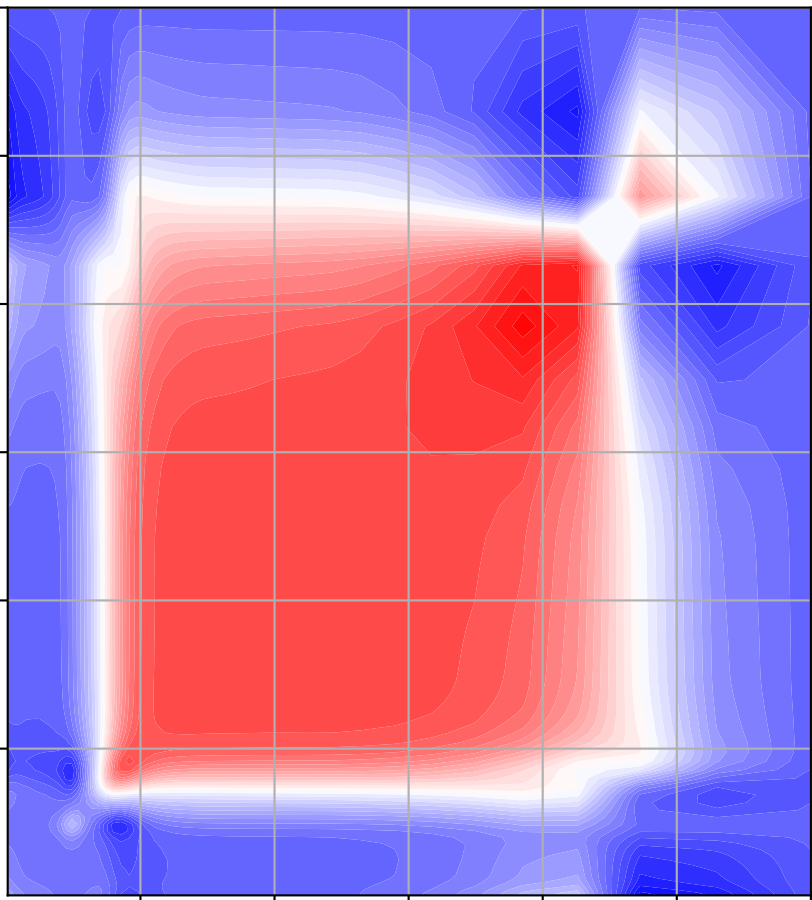


Level covariance matrix

1e-24

Altitude [km]

120
100
80
60
40
20



Altitude [km]

Mixing ratio²

4.2
3.6
3.0
2.4
1.8
1.2
0.6
0.0
-0.6