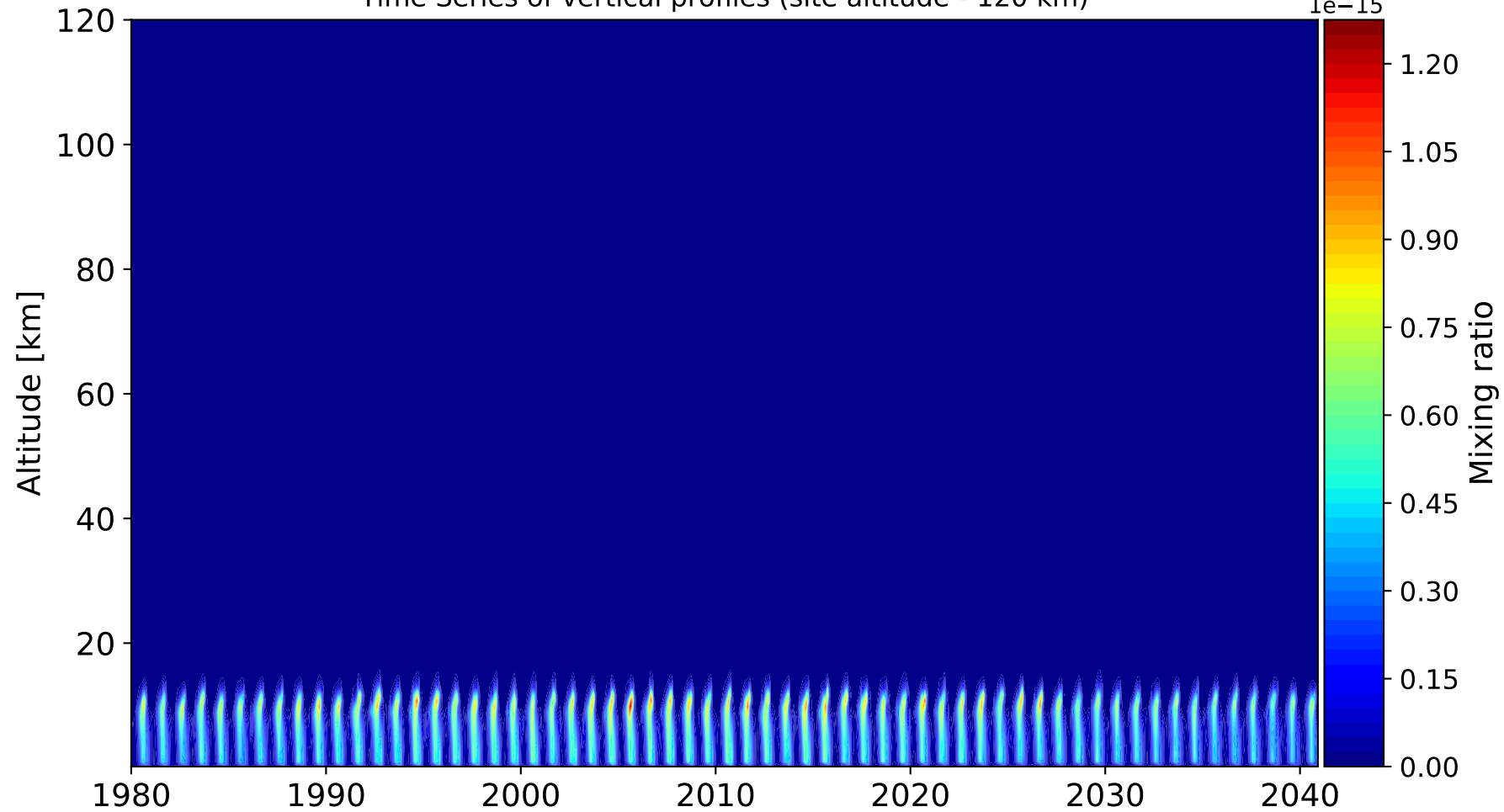
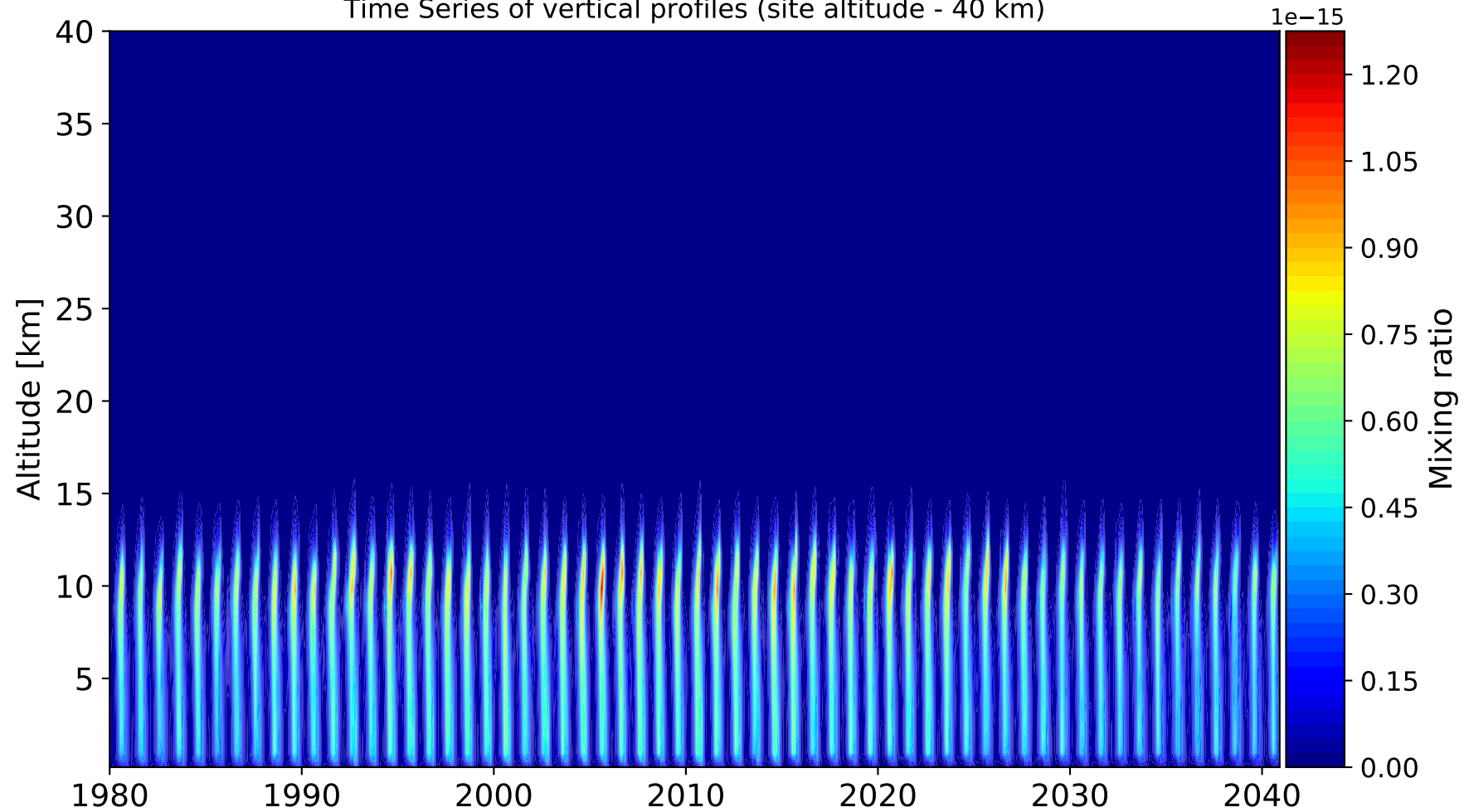


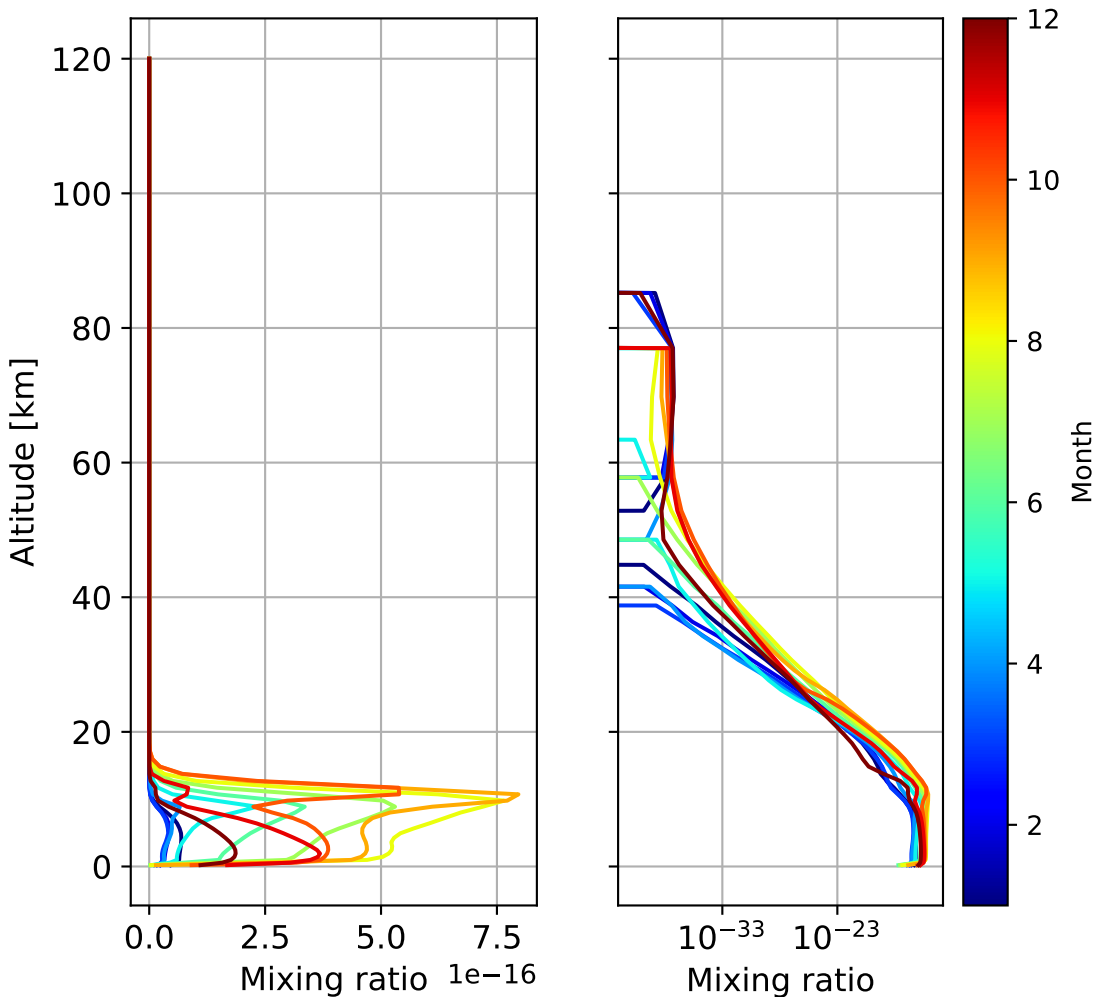
Time Series of vertical profiles (site altitude - 120 km)



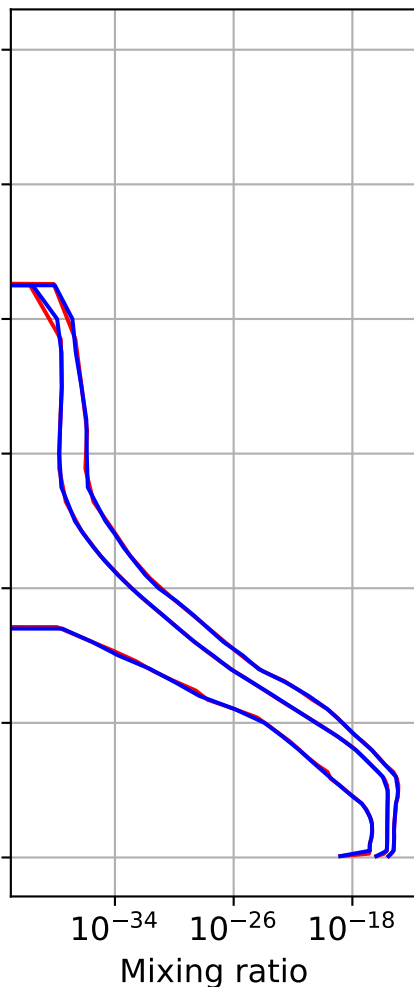
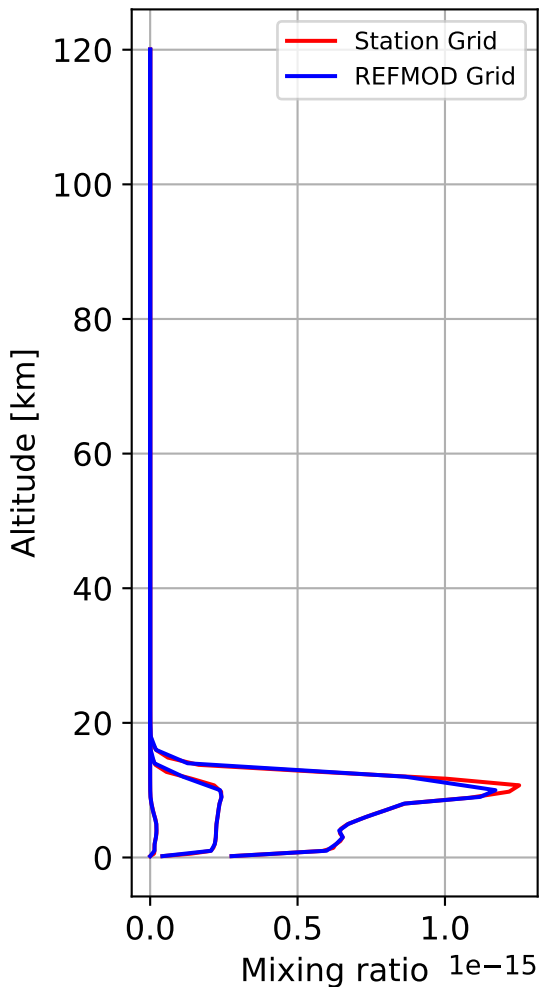
Time Series of vertical profiles (site altitude - 40 km)



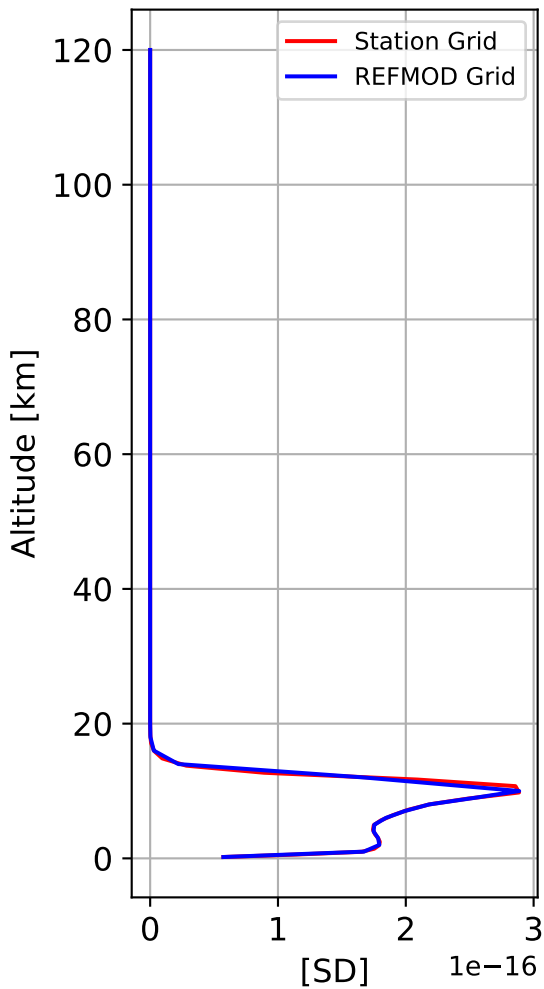
Monthly mean WACCM profile (interpolated to station grid)
Arrival_Heights, -78.83N, 166.66E, 0.2kmasl



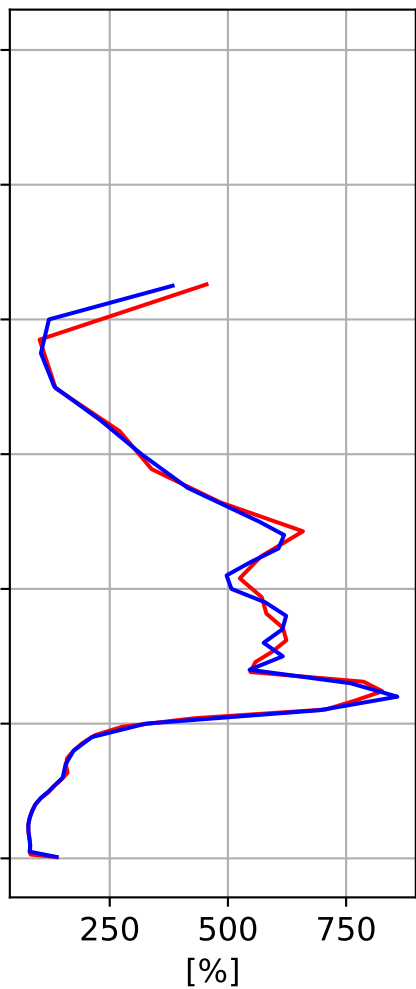
Min, Max, Mean of 732 profiles
Arrival_Heights, -78.83N, 166.66E, 0.2kmasl



Std. Deviation



Percent Deviation

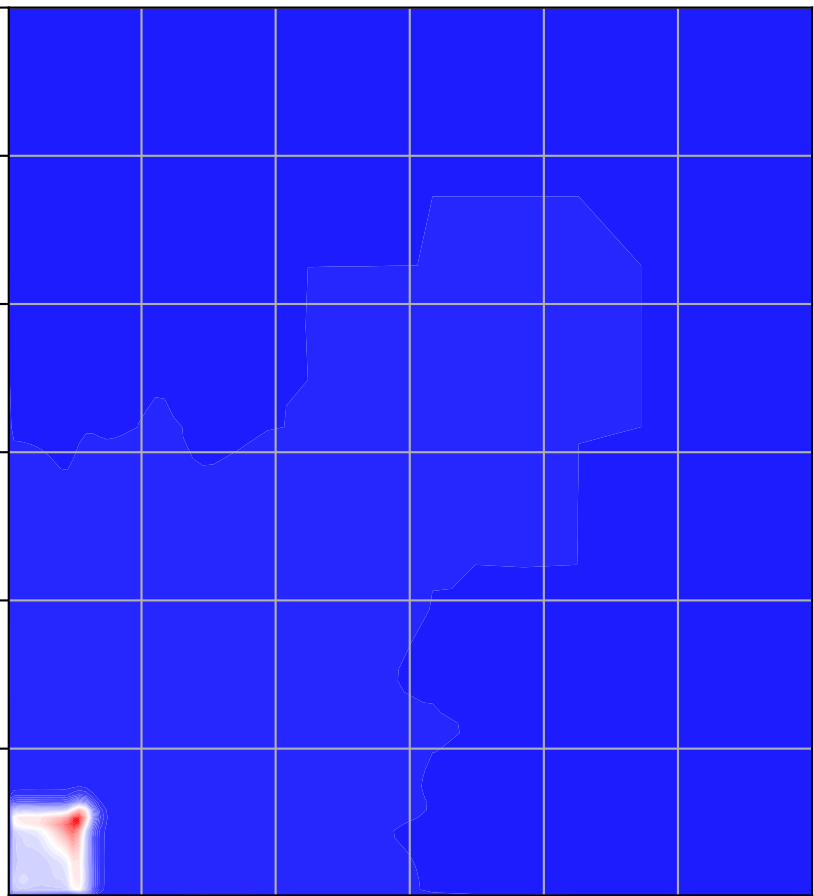


Level covariance matrix

$1e-32$

Altitude [km]

120
100
80
60
40
20



Mixing ratio [^2]

8

7

6

5

4

3

2

1

0

Altitude [km]

20

40

60

80

100

120